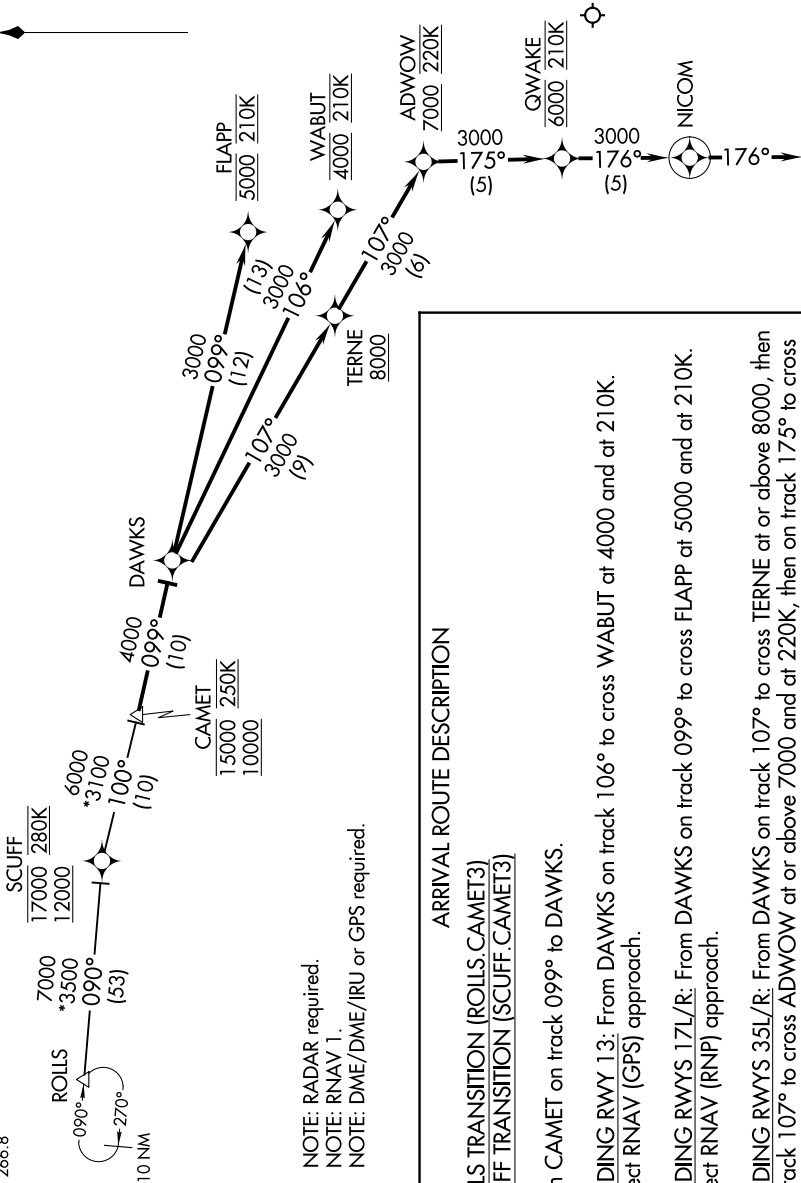


CAMET THREE ARRIVAL (RNAV)

SC-1, 28 NOV 2024 to 26 DEC 2024

OKC-DATIS
125.85
OKC CITY APP CON
124.6 266.8



NOTE: Chart not to scale.

ARRIVAL ROUTE DESCRIPTION

ROLLS TRANSITION (ROLLS.CAMET3)
SCUFF TRANSITION (SCUFF.CAMET3)

From CAMET on track 099° to DAWKS.

LANDING RWY 13: From DAWKS on track 106° to cross WABUT at 4000 and at 210K.
Expect RNAV (GPS) approach.

LANDING RWYS 17L/R: From DAWKS on track 099° to cross FLAPP at 5000 and at 210K.
Expect RNAV (RNP) approach.

LANDING RWYS 35L/R: From DAWKS on track 107° to cross TERNE at or above 8000, then on track 107° to cross ADWOW at or above 7000 and at 220K, then on track 175° to cross QWAKE at 6000 and at 210K, then on track 176° to NICOM, then on track 176°. Expect RADAR vectors to final approach course.

SC-1, 28 NOV 2024 to 26 DEC 2024

CAMET THREE ARRIVAL (RNAV)