

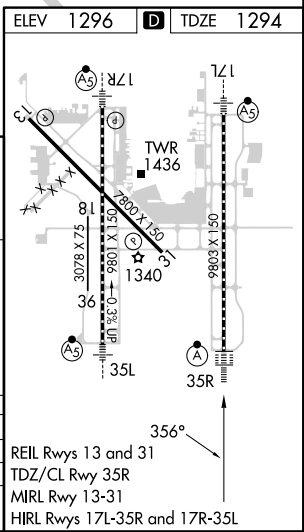
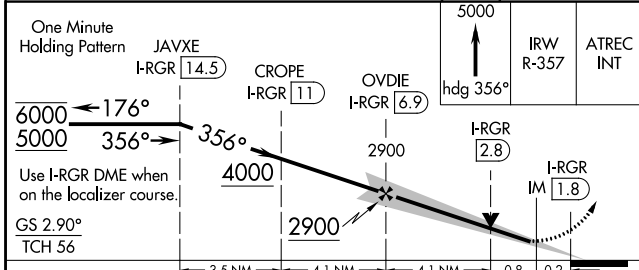
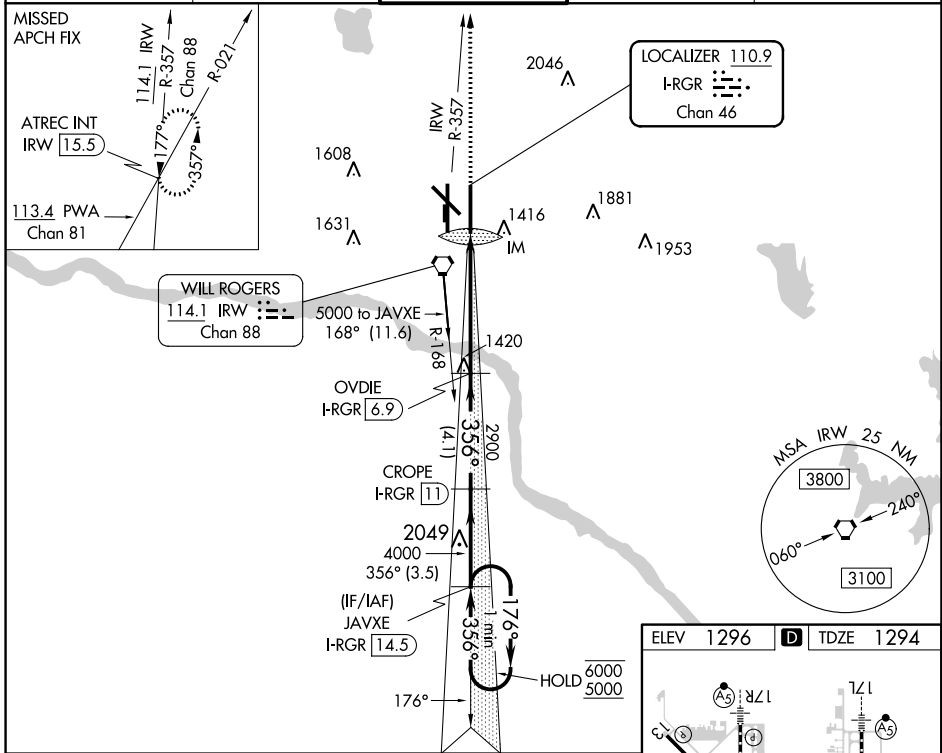
LOC/DME I-RGR 110.9 Chan 46	APP CRS 356°	Rwy Idg 9802 TDZE 1294 Apt Elev 1296
---	------------------------	---

ILS or LOC RWY 35R

OKC WILL ROGERS INTL (OKC)

DME required.	ALSF-2	MISSED APPROACH: Climb to 5000 on heading 356° and on IRW VORTAC R-357 to ATREC INT/IRW 15.5 DME and hold, continue climb-in-hold to 5000.
<p>Simultaneous approach authorized. For inop ALS, increase S-ILS 35R Cat E visibility to RVR 4000 and S-LOC 35R Cats C/D/E visibility to RVR 5500.</p> <p>ASR</p>		

D-ATIS 125.85	OKE CITY APP CON 124.6 266.8	ROGERS TOWER 119.35 269.45	GND CON 121.9 348.6	CLNC DEL 124.35
-------------------------	--	--------------------------------------	-------------------------------	---------------------------



CATEGORY	A	B	C	D	E
S-ILS 35R	1494/18 200 (200-½)				
S-LOC 35R	1640/24 346 (400-½) 1640/30 346 (400-¾)				
CIRCLING	1740-1 444 (500-1)	1760-1 464 (500-1)	1960-1¾ 664 (700-1¾)	2000-2¼ 704 (800-2¼)	2240-3 944 (1000-3)

REIL Rwy 13 and 31
TDZ/CL Rwy 35R
MIRL Rwy 13-31
HIRL Rwy 17L-35R and 17R-35L

SC-1, 28 NOV 2024 to 26 DEC 2024

SC-1, 28 NOV 2024 to 26 DEC 2024