

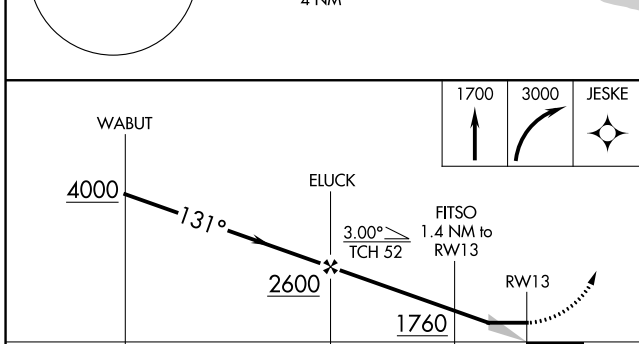
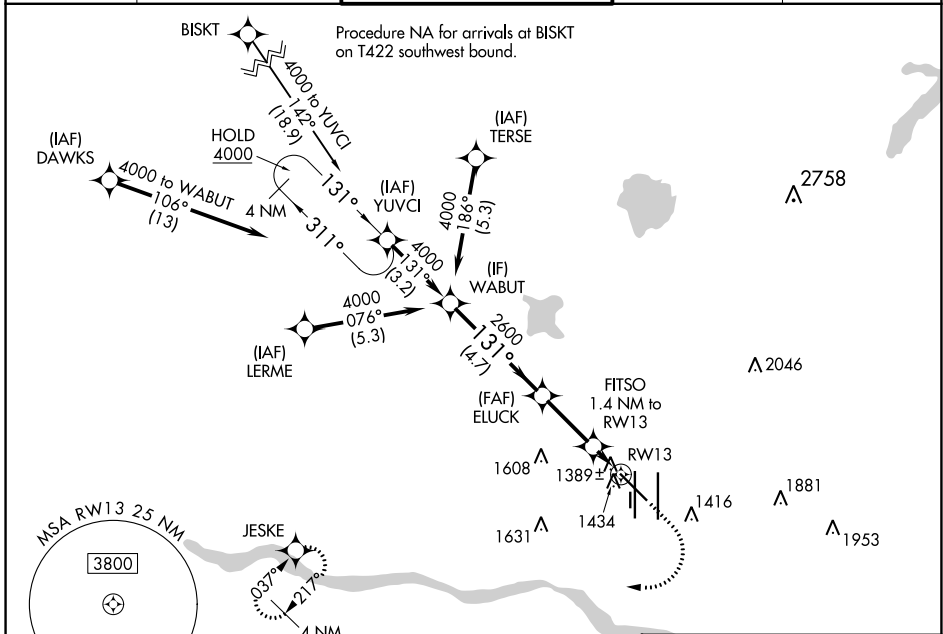
WAAS CH <b>45625</b> <b>W13A</b>	APP CRS <b>131°</b>	Rwy Idg TDZE Apt Elev	<b>7800</b> <b>1279</b> <b>1296</b>
--	------------------------	-----------------------------	---

# RNAV (GPS) RWY 13

OKC WILL ROGERS INTL (OKC)

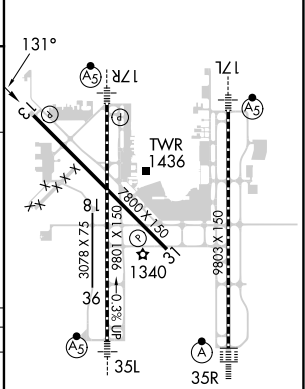
RNP APCH-GPS.		MISSED APPROACH: Climb to 1700 then climbing right turn to 3000 direct JESKE and hold.		
▼	▲			
ASR				

D-ATIS <b>125.85</b>	OKE CITY APP CON <b>124.6 266.8</b>	ROGERS TOWER <b>119.35 269.45</b>	GND CON <b>121.9 348.6</b>	CLNC DEL <b>124.35</b>
-------------------------	--	--------------------------------------	-------------------------------	---------------------------



ELEV 1296	<b>D</b>	TDZE 1279
-----------	----------	-----------

CATEGORY	A	B	C	D
LP MDA	1640-1		361 (400-1)	
LNAV MDA	1700-1	421 (500-1)	1700-1¼	421 (500-1¼)
CIRCLING	1740-1 444 (500-1)	1760-1 464 (500-1)	1960-1¾ 664 (700-1¾)	2000-2¼ 704 (800-2¼)



REIL Rwy 13 and 31  
 TDZ/CL Rwy 35R  
 MRL Rwy 13-31  
 HIRL Rwy 17L-35R and 17R-35L

SC-1, 28 NOV 2024 to 26 DEC 2024

SC-1, 28 NOV 2024 to 26 DEC 2024