

| | | |
|-------------|----------|-------------|
| APP CRS | Rwy Idg | 9802 |
| 176° | TDZE | 1287 |
| | Apt Elev | 1296 |

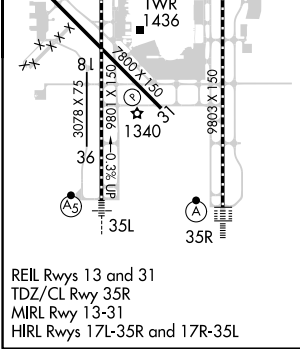
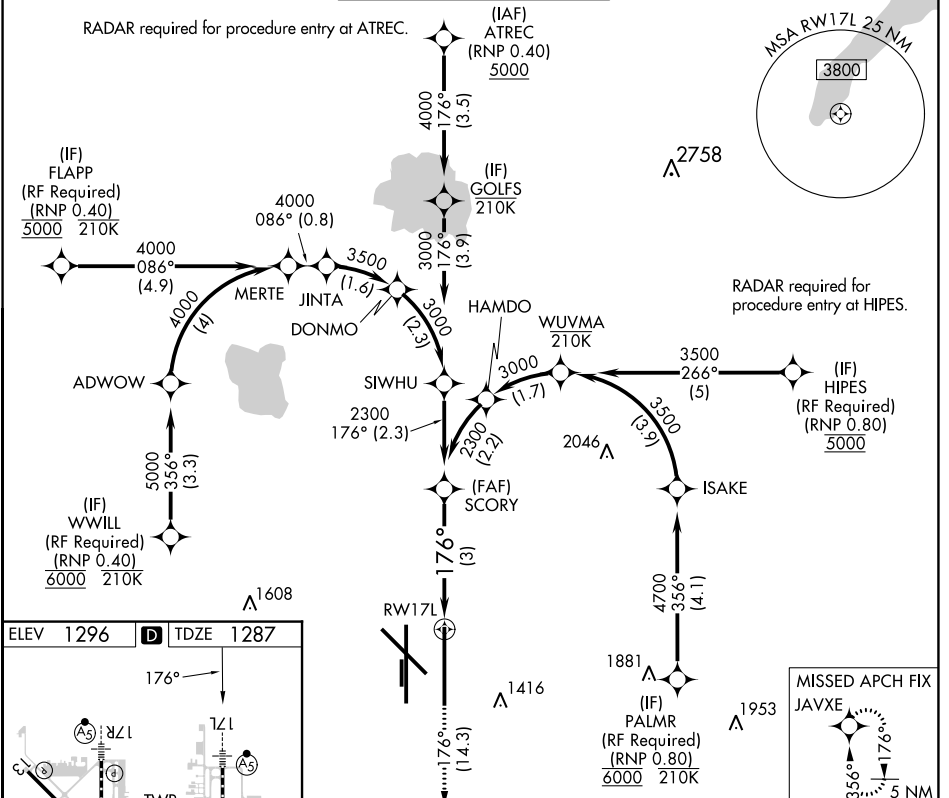
RNAV (RNP) Z RWY 17L

OKC WILL ROGERS INTL (OKC)

ASR For uncompensated Baro-VNAV systems, procedure NA below -12°C (11°F) or above 54°C (130°F). GPS required. Simultaneous approach authorized with Rwy 17R. Use of FD or AP providing RNAV track guidance required during simultaneous operations.

MALSR MISSED APPROACH: Climb to 5000 on track 176° to JAVXE and hold, continue climb-in-hold to 5000.

| | | | | |
|---------------|--------------------|----------------------|--------------------|---------------|
| D-ATIS | OKC CITY APP CON | ROGERS TOWER | GND CON | CNLC DEL |
| 125.85 | 124.6 266.8 | 119.35 269.45 | 121.9 348.6 | 124.35 |



| | | | | |
|-------------|---------|-----------------------------------------|--------------------|---|
| 5000 | JAVXE | See planview for multiple IF locations. | SCORY | |
| ↑ | tr 176° | | 2300 | |
| | | | GP 3.00° TCH 59 | |
| | | | 3 NM | |
| CATEGORY | A | B | C | D |
| RNP 0.11 DA | | 1555/24 | 268 (300-½) | |
| RNP 0.20 DA | | 1643/34 | 356 (400-¾) | |
| RNP 0.30 DA | | 1724/49 | 437 (500-1) | |

AUTHORIZATION REQUIRED

SC-1, 28 NOV 2024 TO 26 DEC 2024

SC-1, 28 NOV 2024 TO 26 DEC 2024