

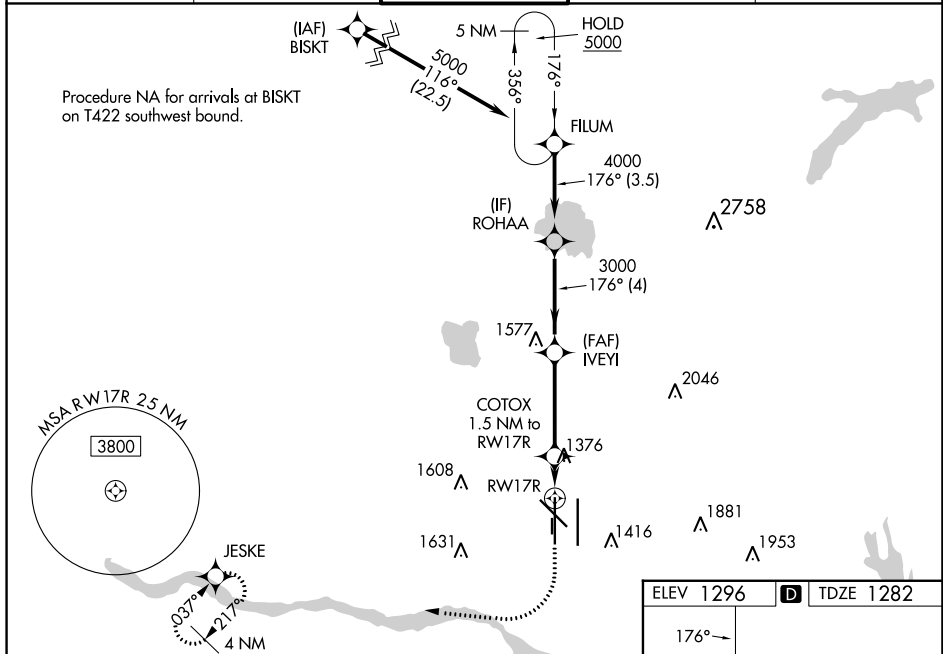
WAAS CH 50102 W17A	APP CRS 176°	Rwy Idg TDZE 1282 Apt Elev 1296	9800
--	------------------------	---	-------------

RNAV (GPS) Y RWY 17R

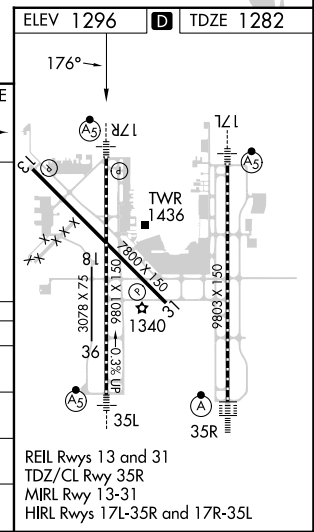
OKC WILL ROGERS INTL (OKC)

RNP APCH-GPS.		MALSR	MISSED APPROACH: Climb to 2000 then climbing right turn to 3000 direct JESKE and hold.
Simultaneous approach authorized. LNAV procedure NA during simultaneous operations. Use of FD or AP required during simultaneous operations. For uncompensated Baro-VNAV systems, LNAV/VNAV NA below -12°C or above 54°C. For inop ALS, increase LNAV/VNAV all Cats visibility to RVR 4500, and LNAV Cats C and D visibility to RVR 5500. * RVR 1800 authorized with use of FD or AP or HUD to DA.		ASR	

D-ATIS 125.85	OKE CITY APP CON 124.6 266.8	ROGERS TOWER 119.35 269.45	GND CON 121.9 348.6	CLNC DEL 124.35
-------------------------	--	---	-------------------------------	---------------------------



FILUM 5000 176° ROHAA 4000 IVEYI 3000 COTOX 1.5 NM to RWY 17R RWY 17R 1800	VGSI and RNAV glidepath not coincident (VGSI Angle 3.00/TCH 60).			
	GP 3.00° TCH 55	3.5 NM	4 NM	3.7 NM
CATEGORY	A	B	C	D
LPV DA*	1482/24		200 (200-½)	
LNAV/VNAV DA	1550/24		268 (300-½)	
LNAV MDA	1640/24		1640/30	
CIRCLING	1740-1 444 (500-1)	1760-1 464 (500-1)	1960-1¾ 664 (700-1¾)	2000-2¼ 704 (800-2¼)



SC-1, 28 NOV 2024 to 26 DEC 2024

SC-1, 28 NOV 2024 to 26 DEC 2024