

# ROYAL TWO DEPARTURE

AL-302 (FAA)

NEW CENTURY AIRCENTER (IXD)

OLATHE, KANSAS

NC-2, 28 NOV 2024 to 26 DEC 2024

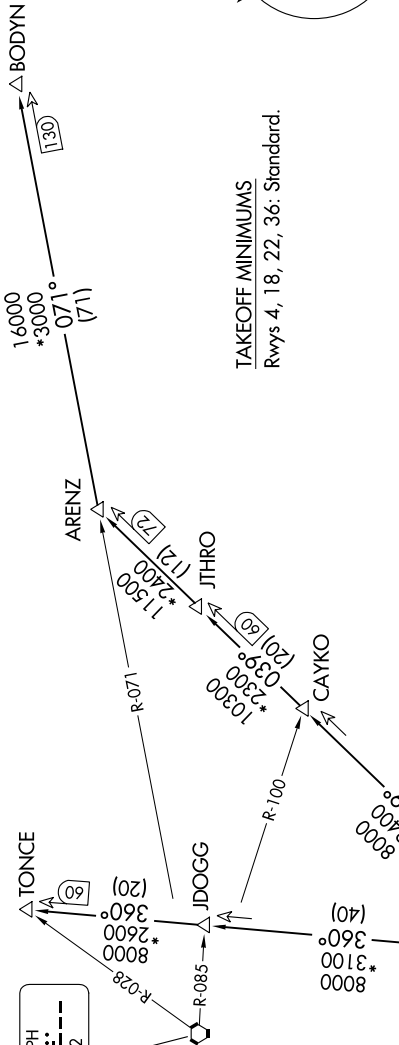
KANSAS CITY DEP CON  
118.9 251.075

ST. JOSEPH  
115.5 STJ  
Chan 102

KANSAS CITY  
113.25 MCI  
Chan 79(I)

RADAR and DME required.

TOP ALTITUDE:  
10000



TAKEOFF MINIMUMS  
Rwys 4, 18, 22, 36: Standard.

## DEPARTURE ROUTE DESCRIPTION

TAKEOFF ALL RUNWAYS: Climb on assigned heading for RADAR vectors to appropriate route. Maintain 10000, expect filed altitude 10 minutes after departure.

ARENZ TRANSITION (ROYAL2.ARENZ): From over MCI VORTAC on MCI R-039 to ARENZ.

BODYN TRANSITION (ROYAL2.BODYN): From over MCI VORTAC on MCI R-039 to ARENZ, then on STJ R-071 to BODYN.

TONCE TRANSITION (ROYAL2.TONCE): From over MCI VORTAC on MCI R-360 to TONCE.

NOTE: Chart not to scale.

NC-2, 28 NOV 2024 to 26 DEC 2024

# ROYAL TWO DEPARTURE

OLATHE, KANSAS

NEW CENTURY AIRCENTER (IXD)