

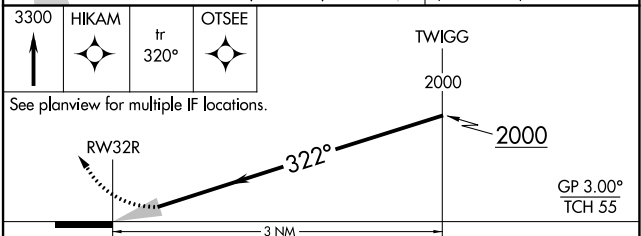
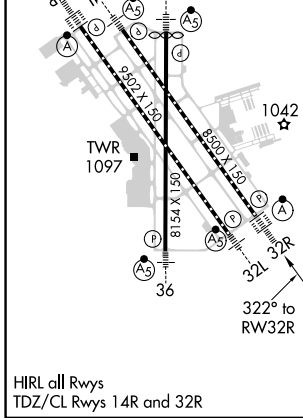
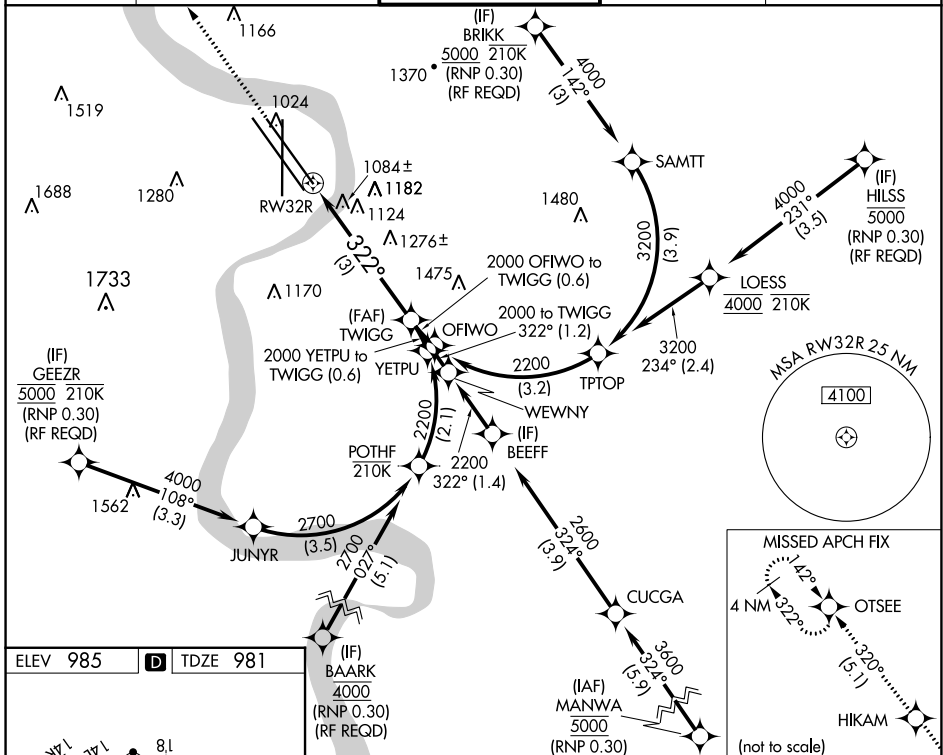
RNAV (RNP) Z RWY 32R

EPPLEY AIRFIELD (OMA)

APP CRS	Rwy Idg	8500
322°	TDZE	981
	Apt Elev	985

RNP AR APCH. RF required.	ALSF-2	MISSED APPROACH: Climb to 3300 direct HIKAM and track 320° to OTSEE and hold.
▼ For uncompensated Baro-VNAV systems, procedure NA below -19°C or above 54°C. For inop ALS, increase RNP 0.30 all Cats visibility to 1 1/2 SM.		

D-ATIS	OMAHA APP CON	OMAHA TOWER	GND CON	CLNC DEL
120.4	120.1 354.05	132.1 256.9	121.9	119.9



AUTHORIZATION REQUIRED				
-------------------------------	--	--	--	--

NC-2, 28 NOV 2024 to 26 DEC 2024

NC-2, 28 NOV 2024 to 26 DEC 2024