

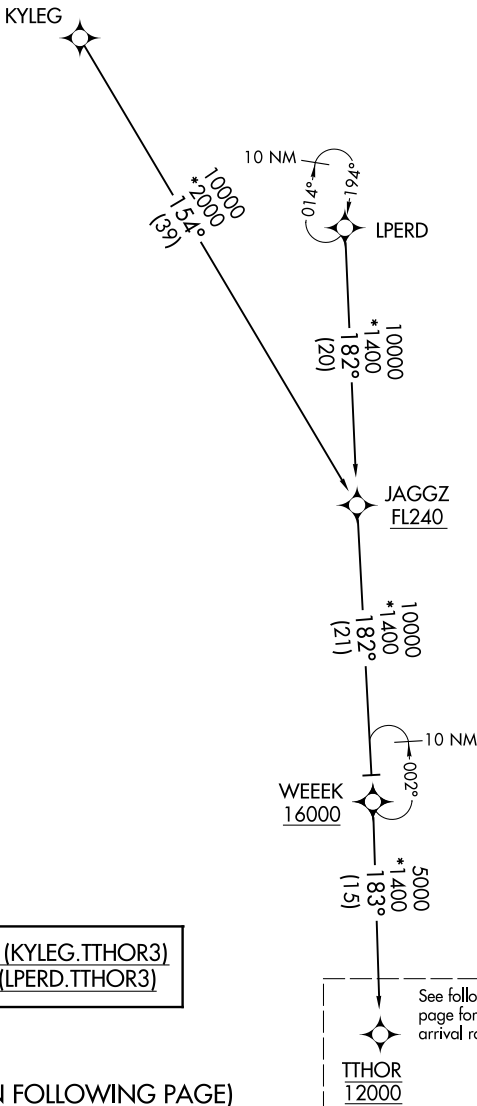
TTHOR THREE ARRIVAL (RNAV) Transition Routes

ORLANDO, FLORIDA

ORLANDO APP CON
 119.775 351.9
 DAYTONA APP CON
 118.85 353.825
 DAB ATIS
 132.875
 EVB ATIS
 124.625
 LEE ATIS
 134.325
 ORL ATIS
 127.25
 OMN ATIS
 118.475
 SFB ATIS
 125.975

RNAV 1 - DME/DME/IRU or GPS.
 RADAR required.

NOTE: Jet and turboprop aircraft only.



KYLEG TRANSITION (KYLEG.TTHOR3)
 LPERD TRANSITION (LPERD.TTHOR3)

(CONTINUED ON FOLLOWING PAGE)

See following page for arrival routes.
 TTHOR 12000

NOTE: Chart not to scale.

SE-3, 28 NOV 2024 to 26 DEC 2024

SE-3, 28 NOV 2024 to 26 DEC 2024

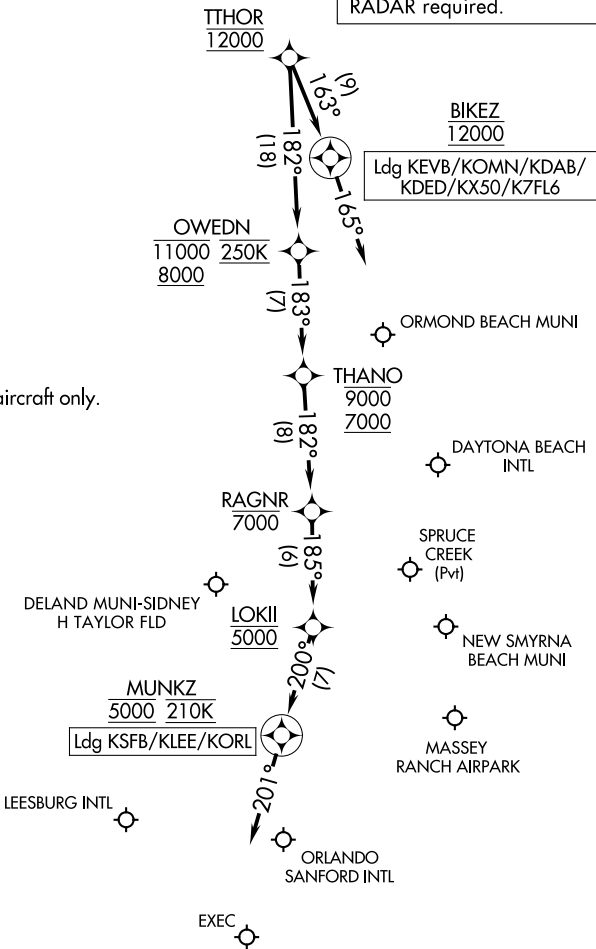
TTHOR THREE ARRIVAL (RNAV) Arrival Routes

ORLANDO, FLORIDA

ORLANDO APP CON
119.775 351.9
DAYTONA APP CON
118.85 353.825
DAB ATIS
132.875
EVB ATIS
124.625
LEE ATIS
134.325
ORL ATIS
127.25
OMN ATIS
118.475
SFB ATIS
125.975

RNAV 1 - DME/DME/IRU or GPS.
RADAR required.

NOTE: Jet and turboprop aircraft only.



NOTE: Chart not to scale.

ARRIVAL ROUTE DESCRIPTION

LANDING KEVB/KOMN/KDAB/KDED/KX50/K7FL6: From TTHOR on track 163° to cross BIKEZ at 12000, then on track 165°. Expect RADAR vectors to final approach course.

LANDING KSF/KLEE/KORL: From TTHOR on track 182° to cross OWEDN between 8000 and 11000 and at 250K, then on track 183° to cross THANO between 7000 and 9000, then on track 182° to cross RAGNR at or below 7000, then on track 185° to cross LOKII at 5000, then on track 200° to cross MUNKZ at 5000 and at 210K, then on track 201°. Expect RADAR vectors to final approach course.