

HI-ILS or LOC RWY 25

LOC I-PMD 110.7	APCH CRS 254°	Rwy Idg 12,002 TDZE 2503 Arpt Elev 2543
---------------------------	-------------------------	--

AL-310 [USAF]

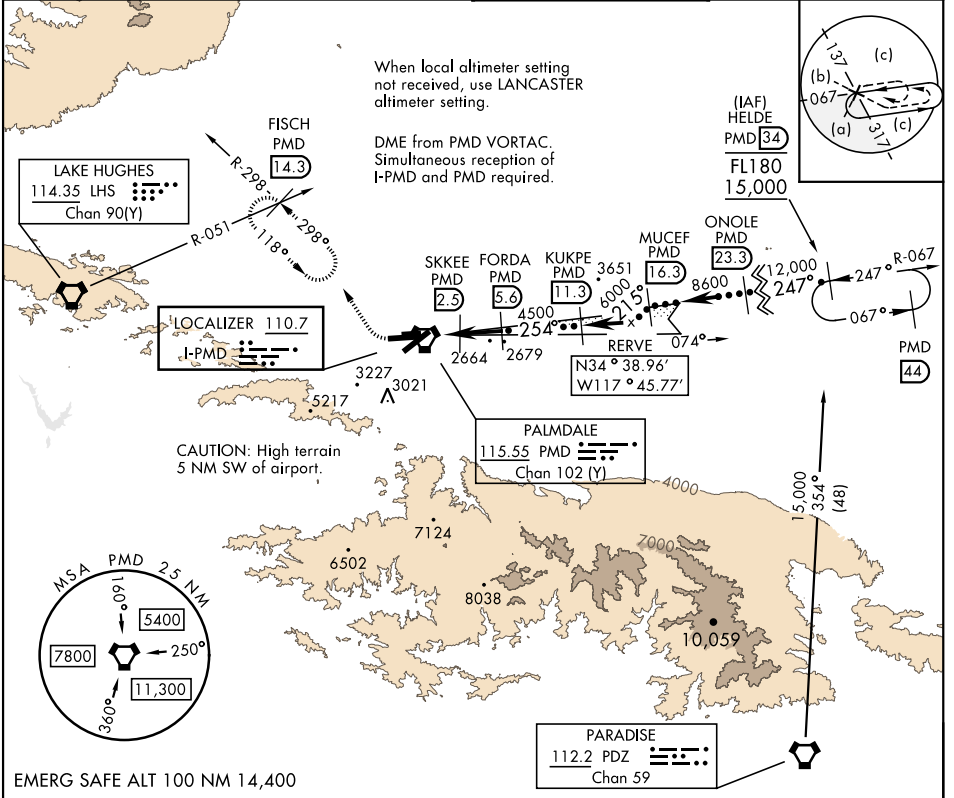
PALMDALE USAF PLANT 42 (KPMD)

DME required.

▲ * Circling NA south of Rws 4 and 25.

MISSED APPROACH: Climb to 3000 then climbing right turn on heading 318° and PMD VORTAC R-298 to FISCH INT/PMD 14.3 DME/RADAR and hold, continue climb-in-hold to 6700.

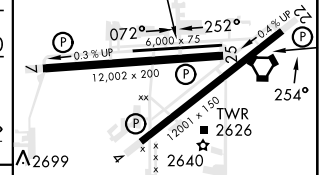
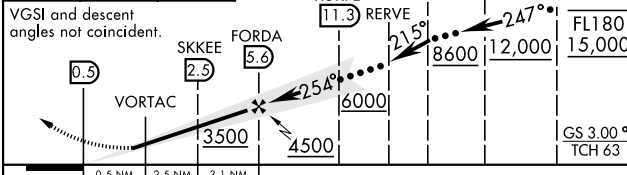
ATIS 118.275	JOSHUA APP CON 124.55 363.0	TOWER* 123.7 (CTAF) 0 317.6	GND CON 121.9 317.6
------------------------	---------------------------------------	---------------------------------------	-------------------------------



SW-3, 28 NOV 2024 to 26 DEC 2024

SW-3, 28 NOV 2024 to 26 DEC 2024

3000	6700	PMD R-298	ELEV 2543	TDZE 2503
------	------	-----------	-----------	-----------



CATEGORY	C	D	E	FAF to MAP 6.1 NM					
S-ILS 25		2703-¾	200 (200-¾)	Knots	60	90	120	150	180
S-LOC 25		2820-7/8	317 (300-7/8)	Min:Sec	6:06	4:04	3:03	2:26	2:02
CIRCLING*	3140-1½ 597 (600-1½)	3740-3 1197 (1200-3)	3760-3 1217 (1300-3)						

HI-ILS or LOC RWY 25