

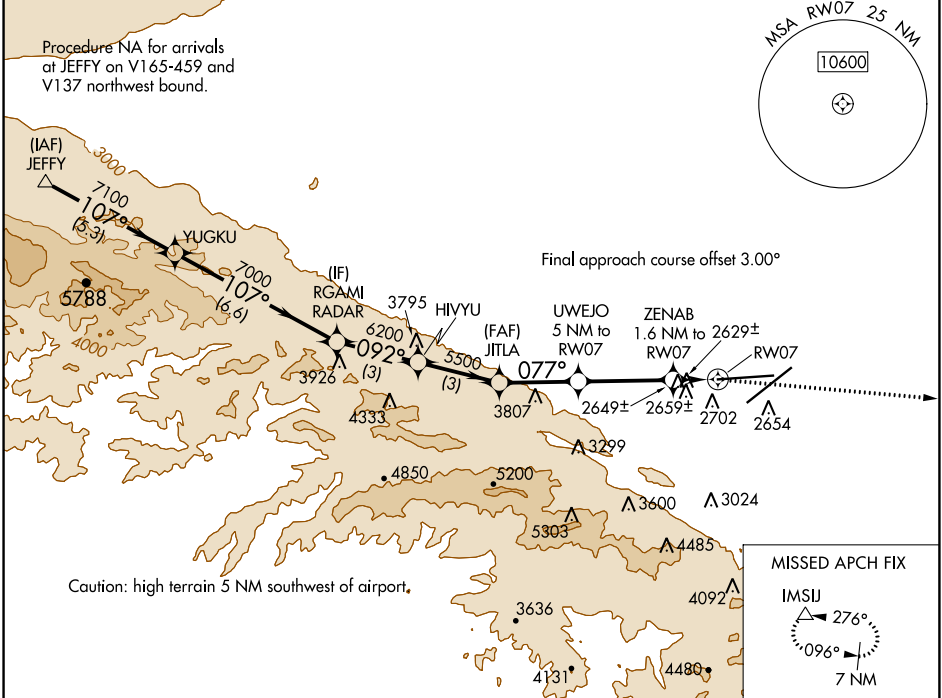
WAAS CH <b>53441</b> <b>W07A</b>	APP CRS <b>077°</b>	Rwy ldg <b>12002</b> TDZE <b>2540</b> Apt Elev <b>2543</b>
--	------------------------	--

# RNAV (GPS) RWY 7

PALMDALE USAF PLANT 42 (PMD)

RNP APCH.	MISSED APPROACH: Climbing right turn to 7000 direct IMSJ and hold.
Circling NA for Cats C and D south of Rws 4 and 25.	

ATIS <b>118.275</b>	JOSHUA APP CON <b>124.55 363.0</b>	PALMDALE TOWER * <b>123.7 (CTAF) 0 317.6</b>	GND CON <b>121.9 317.6</b>
------------------------	---------------------------------------	---	-------------------------------



SW-3, 28 NOV 2024 to 26 DEC 2024

SW-3, 28 NOV 2024 to 26 DEC 2024

	ELEV 2543	TDZE 2540					
JEFFY	YUGKU	RGAMI	HIVYU	JITLA	UWEJO	ZENAB	IMSJ
8000	7100	7000	6200	5500	4440	3180	7000
VGSi and descent angles not coincident (VGSi Angle 3.00/TCH 78).							
CATEGORY	A	B	C	D			
LP MDA	2880-1 340 (400-1)						
LNAV MDA	2920-1 380 (400-1)						
CIRCLING	3020-1 477 (500-1)	3060-1 517 (600-1)	3140-1½ 597 (600-1½)	3740-3 1197 (1200-3)			
REIL Rws 4, 7, 22 and 25 HIRL Rws 4-22 and 7-25							