

# HI-ILS or LOC Y RWY 14L

LOC I-TYF <b>111.5</b>	APCH CRS <b>138°</b>	Rwy Idg <b>10,008</b> TDZE <b>14</b> Arprt Elev <b>17</b>
---------------------------	-------------------------	---

[USAF]

TYNDALL AFB (KPAM)

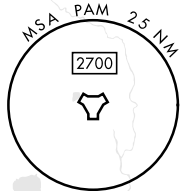
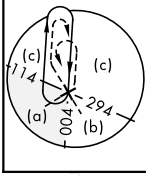
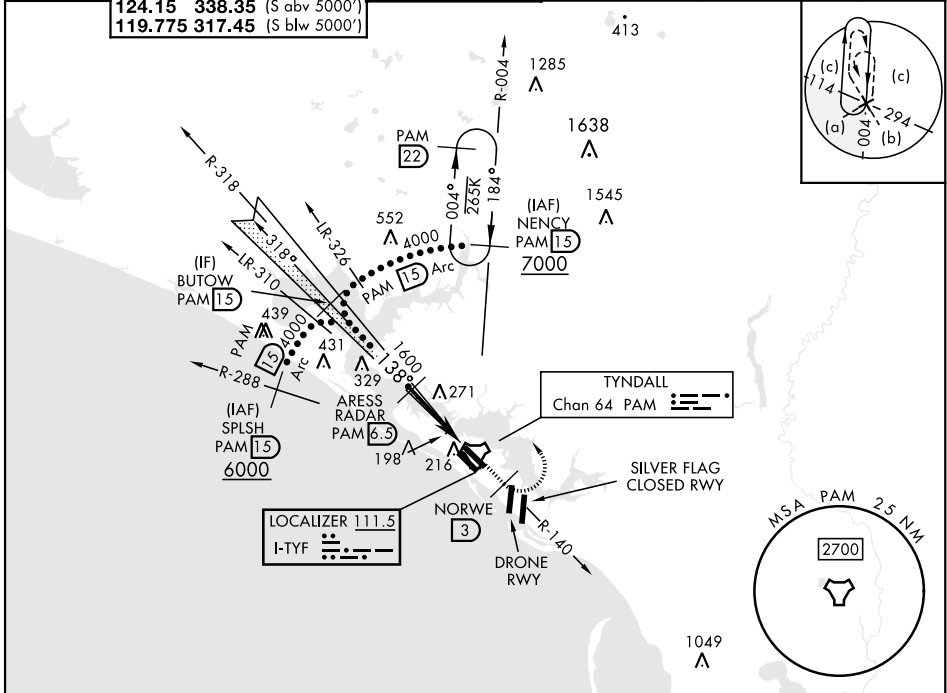
DME or RADAR required.

- \* When ALS inop, increase RVR to 40, vis to 3/4 mile.
- \*\* When ALS inop, increase vis to 1 1/2 miles.

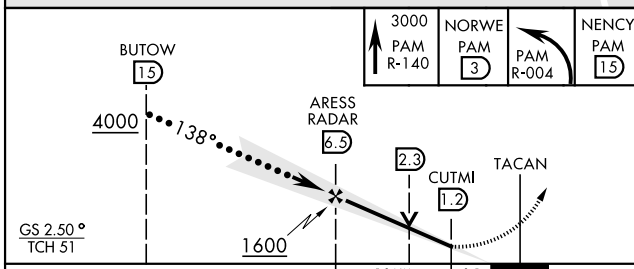


MISSED APPROACH: Track outbound PAM TACAN R-140 to 3 DME (NORWE), then turn left to join PAM R-004 to 15 DME (NENCY) and hold. Maintain 3000.

ATIS ★ <b>254.4</b>	APP CON <b>125.2 392.1</b> (N abv 5000') <b>120.825 379.3</b> (N blw 5000') <b>124.15 338.35</b> (S abv 5000') <b>119.775 317.45</b> (S blw 5000')	TOWER ★ <b>133.95 263.15</b>	GND CON <b>121.9 259.3</b>	CLNC DEL <b>118.05 348.7</b>	ASR/PAR
------------------------	--	---------------------------------	-------------------------------	---------------------------------	---------



EMERG SAFE ALT 100 NM 3300



ELEV 17	TDZE 14
HIRL all Rwy's Rwy 32L Idg 9135'	
Recommend Rwy 14L-32R for apch end engagement of A-Gear.	
FAF to MAP 5.3 NM	
Knots	120 140 160 180 200
Min:Sec	2:39 2:16 1:59 1:46 1:35

CATEGORY	C	D	E
S-ILS 14L *	214/24	200	(200-1/2)
S-LOC 14L **	500/50	486	(500-1)
CIRCLING	540-1 1/2	580-2	620-2 1/4
	523 (600-1 1/2)	563 (600-2)	603 (700-2 1/4)

# HI-ILS or LOC Y RWY 14L

SE-3, 28 NOV 2024 to 26 DEC 2024

SE-3, 28 NOV 2024 to 26 DEC 2024