

PANAMA CITY, FLORIDA

ILS or LOC Z RWY 14L

LOC I-TYF 111.5	APCH CRS 138°	Rwy Idg 10,008 TDZE 14 Arpt Elev 17
---------------------------	-------------------------	--

[USAF]

TYNDALL AFB (KPAM)

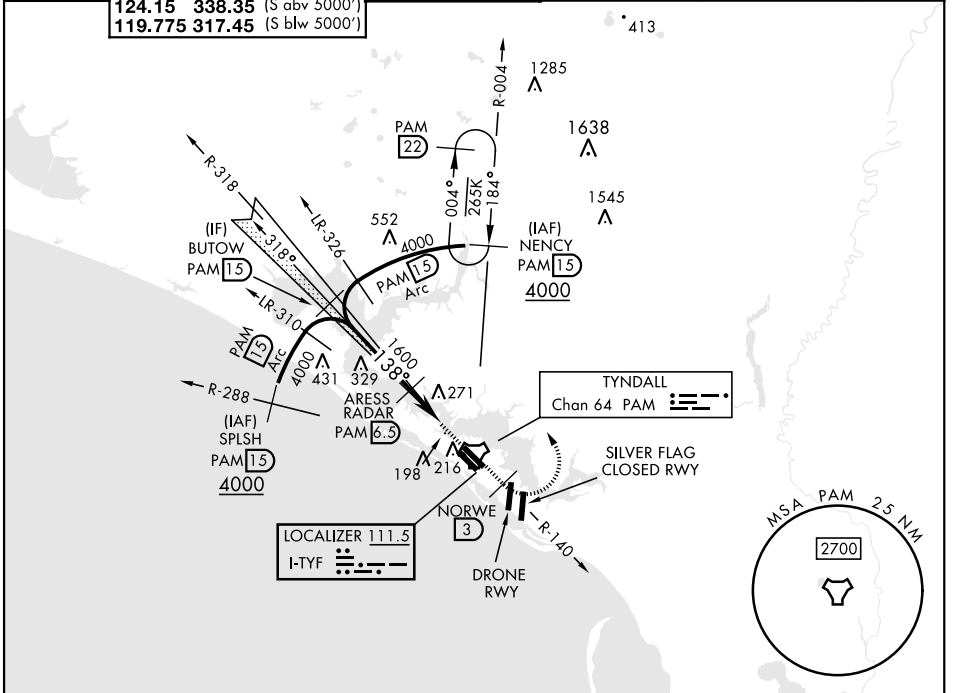
DME or RADAR required

▼ * When ALS inop, increase RVR to 40 and vis to 3/8 mile.
 ** When ALS inop, increase CAT AB RVR to 55, vis to 1 mile;
 CAT CDE vis to 1 3/8 miles.

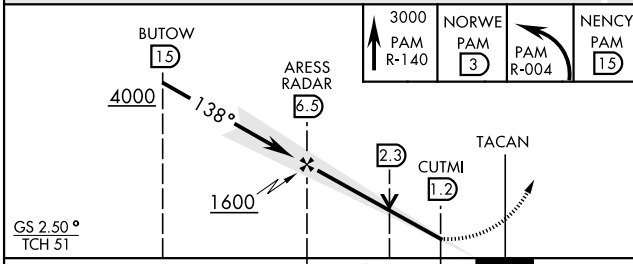


MISSED APPROACH: Track outbound PAM TACAN R-140 to 3 DME (NORWE), then turn left to join PAM R-004 to 15 DME (NENCY) and hold. Maintain 3000.

ATIS ★ 254.4	APP CON 125.2 392.1 (N abv 5000') 120.825 379.3 (N blw 5000') 124.15 338.35 (S abv 5000') 119.775 317.45 (S blw 5000')	TOWER ★ 133.95 263.15	GND CON 121.9 259.3	CLNC DEL 118.05 348.7	ASR/PAR
------------------------	--	---------------------------------	-------------------------------	---------------------------------	---------

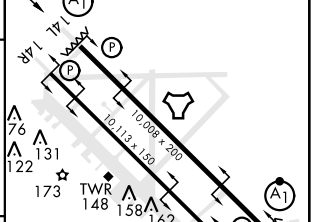


EMERG SAFE ALT 100 NM 3300



ELEV 17	TDZE 14
---------	---------

HIRL all Rwys
Rwy 32L Idg 9135'



CATEGORY	A	B	C	D	E
S-ILS 14L *	214/24		200	(200-1/2)	
S-LOC 14L **	500/24	486 (500-1/2)	500/50	486	(500-1)
CIRCLING	540-1	523 (600-1)	540-1 1/2 523 (600-1 1/2)	580-2 563 (600-2)	620-2 1/4 603 (700-2 1/4)

Recommend Rwy 14L-32R for apch end engagement of A-Gear.					
FAF to MAP 5.3 NM					
Knots	60	90	120	150	180
Min:Sec	5:18	3:32	2:39	2:07	1:46

PANAMA CITY, FLORIDA

30°04'N-85°34'W

TYNDALL AFB (KPAM)

Amtd 4 20MAY21

ILS or LOC Z RWY 14L

SE-3, 28 NOV 2024 to 26 DEC 2024

SE-3, 28 NOV 2024 to 26 DEC 2024