

PATUXENT RIVER, MARYLAND

RNAV (GPS) RWY 6

APCH CRS	Rwy Idg	11,799
059°	TDZE	39
	Arprt Elev	39

-(USN)

PATUXENT RIVER NAS (TRAPNELL FLD) (KNHK)

RNP APCH

ALSF-1

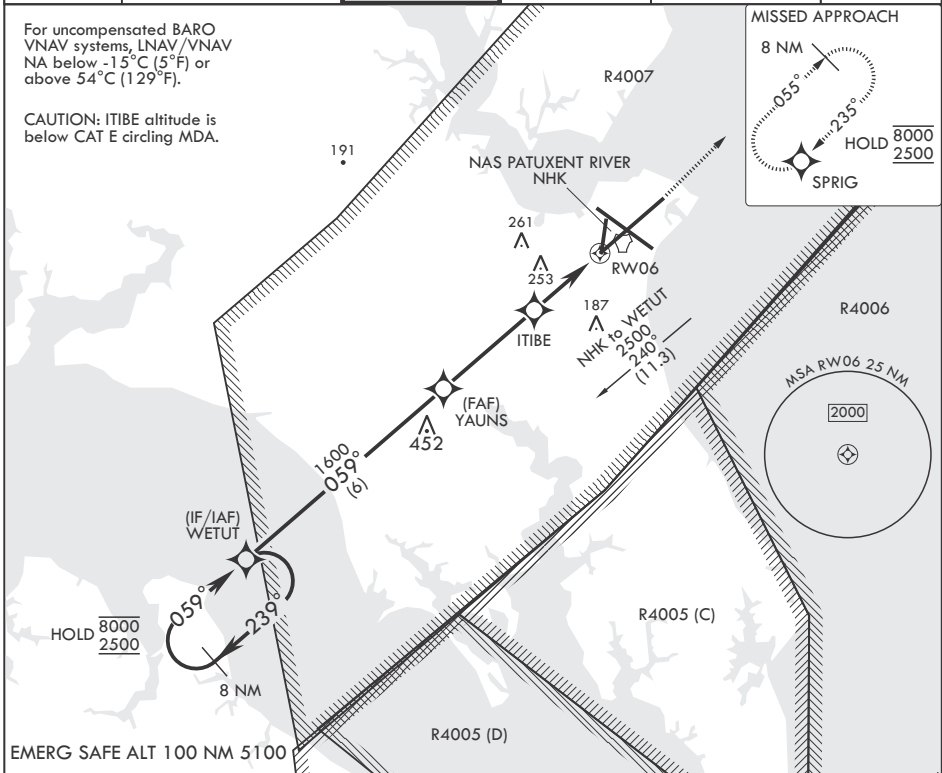
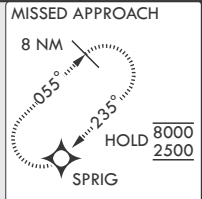
MISSED APPROACH: Climb to 700 then climbing left turn to 2500 direct SPRIG and hold.

* When ALS inop, increase vis to 1 3/8 miles.
 ** When ALS inop, increase CAT AB vis to 1 mile, CAT CD vis to 1 3/8 miles.



ATIS	APP CON/DEP CON*	TOWER	GND CON	CLNC DEL	ASR/PAR
322.425	121.0 250.3	123.7 343.65	120.6 336.4	135.2 316.125	

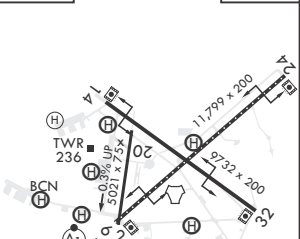
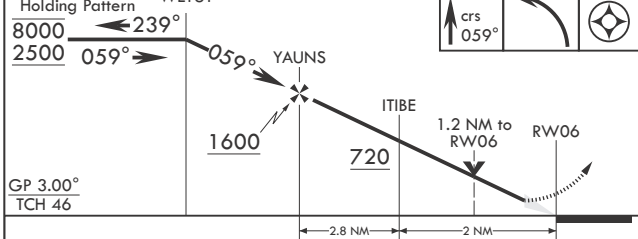
For uncompensated BARO VNAV systems, LNAV/VNAV NA below -15°C (5°F) or above 54°C (129°F).
 CAUTION: ITIBE altitude is below CAT E circling MDA.



NE-3, 28 NOV 2024 to 26 DEC 2024

NE-3, 28 NOV 2024 to 26 DEC 2024

8 NM Holding Pattern WETUT	700	2500	SPRIG	ELEV 39	TDZE 39
----------------------------	-----	------	-------	---------	---------



CATEGORY	A	B	C	D	E
LNAV/VNAV DA*	480-1 ³ / ₈		441	(500-1 ³ / ₈)	
LNAV MDA**	480-1	441 (500-1)	480-1 ³ / ₈	441 (500-1 ³ / ₈)	
CIRCLING	540-1 501 (600-1)	560-1 521 (600-1)	620-1 ¹ / ₂ 581 (600-1 ¹ / ₂)	680-2 641 (700-2)	820-2 ³ / ₄ 781 (800-2 ³ / ₄)

PATUXENT RIVER, MARYLAND
 Amdt 3 07SEP23

38°17'N - 76°25'W PATUXENT RIVER NAS (TRAPNELL FLD) (KNHK)

RNAV (GPS) RWY 6