

24305

**SWABY NINE DEPARTURE (SWABY9, SWABY)**

PATUXENT RIVER NAS (TRAPNELL FIELD) (KNHK)

TACAN required

[USN]

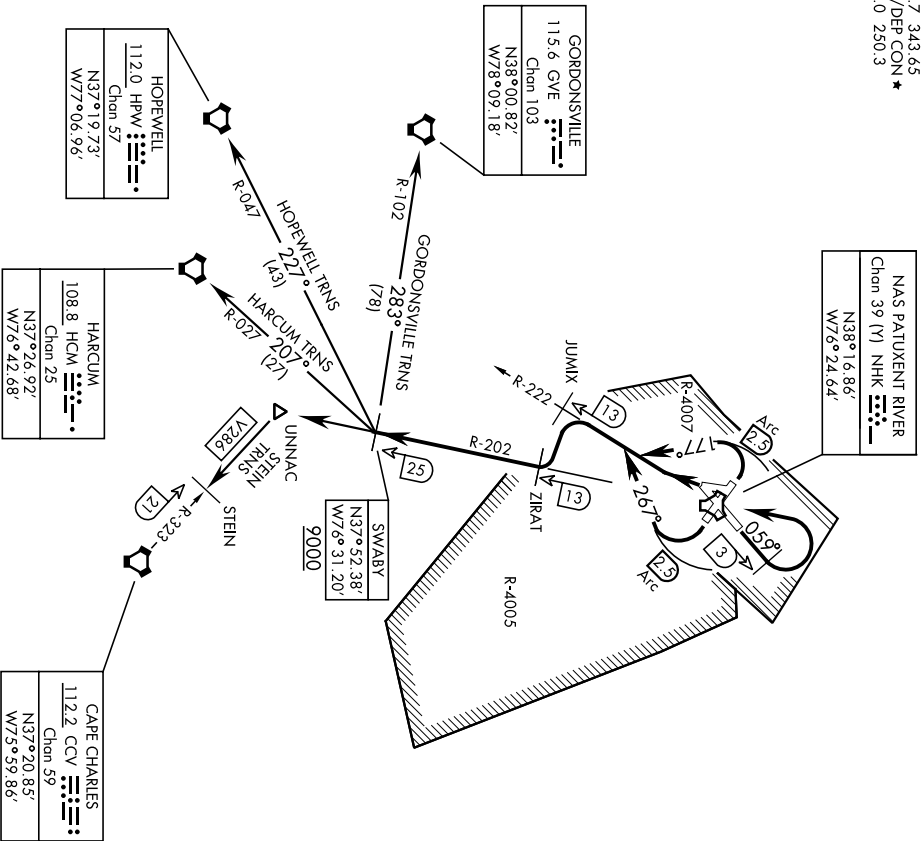
PATUXENT RIVER, MARYLAND

| Knobs     | 60  | 120 | 180 | 240  | 300  | 360  |
|-----------|-----|-----|-----|------|------|------|
| V/Vl(fpm) | 310 | 620 | 930 | 1240 | 1550 | 1860 |

ATC Climb Rate to 9000

Departure Rwy 2-20 not authorized.  
Minimum filing dh 10,000.

- 285
- ATIS 322.425
- CLNC DEL 135.2 316.125
- GND CON 120.6 336.4
- TOWER 123.7 343.65
- APP/DEP CON ★ 121.0 250.3



NE-3, 28 NOV 2024 to 26 DEC 2024

NE-3, 28 NOV 2024 to 26 DEC 2024

**ATC BRIEF  
REQUIRED**  
135.2 316.125

Note: Chart not to scale

(NARRATIVE ON FOLLOWING PAGE)

**SWABY NINE DEPARTURE (SWABY9, SWABY)**  
Orig 02DEC21

PATUXENT RIVER, MARYLAND  
PATUXENT RIVER NAS (TRAPNELL FIELD) (KNHK)

## ▼ DEPARTURE ROUTE DESCRIPTION

TAKEOFF RWY 6: Climb heading 059°, at NHK TACAN 3 DME turn left direct NHK thence...

TAKEOFF RWY 14: Climbing right turn heading 267° within NHK TACAN 2.5 DME to intercept NHK R-222, thence...

TAKEOFF RWY 24: Climbing left turn to intercept NHK TACAN R-222, thence...

TAKEOFF RWY 32: Climbing left turn heading 177°, to intercept NHK TACAN R-222, thence...

...Then on NHK R-222 to JUMX. Climbing left turn to intercept 13 DME arc to ZIRAT, then turn right on R-202 to SWABY. Then on assigned transition or expect radar vectors.

GORDONSVILLE TRANSITION (SWABY9.GVE): Cross SWABY at or above 9,000, then on GVE VORTAC R-102 to GVE.

HARCUM TRANSITION (SWABY9.HCM): Cross SWABY at or above 9,000, then on HCM VORTAC R-027 to HCM.

HOPEWELL TRANSITION (SWABY9.HPW): Cross SWABY at or above 9,000, then on HPW VORTAC R-047 to HPW.

STEIN TRANSITION (SWABY9.STEIN): Cross SWABY at or above 9,000, then on NHK R-202 to UNNAC, then on CCV VORTAC R-323 to STEIN.