

PATUXENT RIVER, MARYLAND

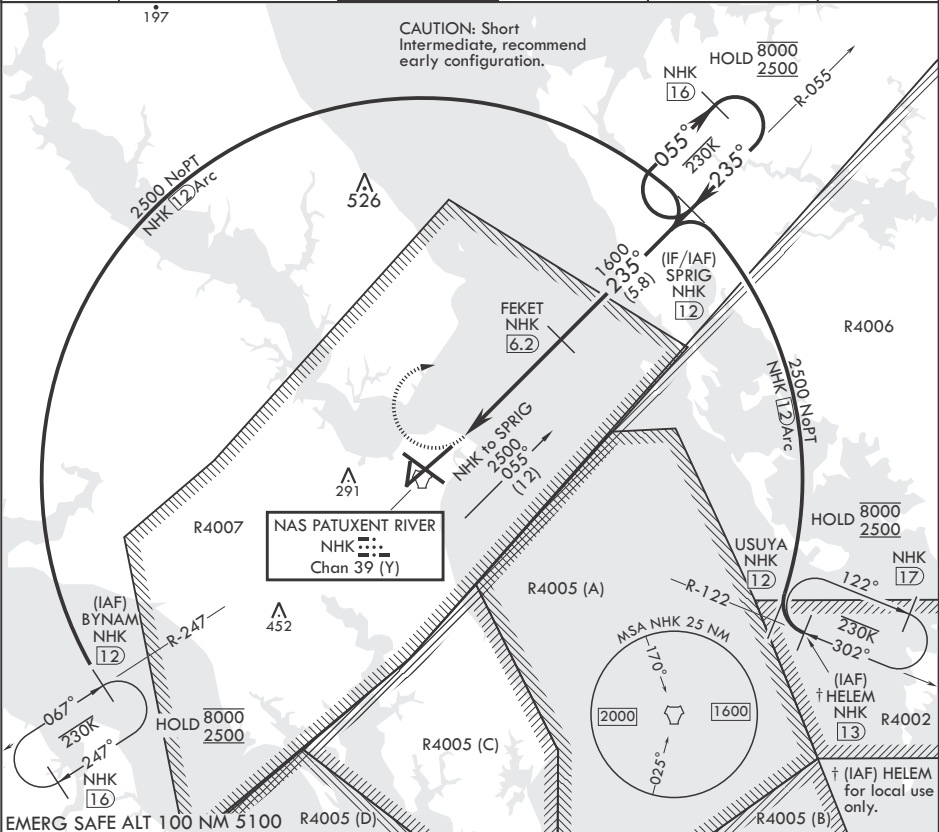
# TACAN Z RWY 24

TACAN NHK Chan 39 (Y)	APCH CRS 235°	Rwy ldg TDZE	11,799 20
		Arprt Elev	39

- (USN) PATUXENT RIVER NAS (TRAPNELL FLD) (KNHK)

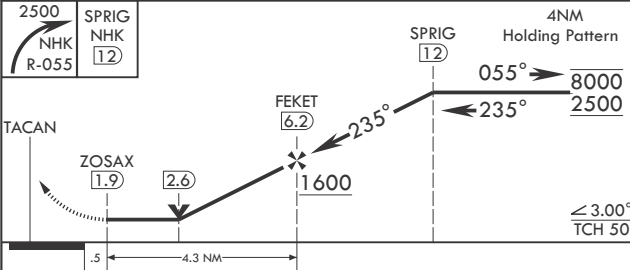
MISSED APPROACH: Climbing right turn to 2500 and intercept NHK TACAN R-055 to SPRIG and hold.

ATIS 322.425	APP CON/DEP CON* 121.0 250.3	TOWER 123.7 343.65	GND CON 120.6 336.4	CLNC DEL 135.2 316.125	ASR/PAR
-----------------	---------------------------------	-----------------------	------------------------	---------------------------	---------

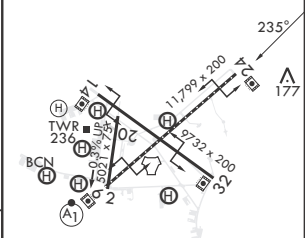


NE-3, 28 NOV 2024 to 26 DEC 2024

NE-3, 28 NOV 2024 to 26 DEC 2024



ELEV 39	TDZE 20
---------	---------



CATEGORY	A	B	C	D
S-24	440-1 420	(500-1)	440-1 $\frac{1}{8}$ 420	(500-1 $\frac{1}{8}$ )
CIRCLING	560-1 521 (600-1)	600-1 561 (600-1)	620-1 $\frac{1}{2}$ 581 (600-1 $\frac{1}{2}$ )	680-2 641 (700-2)

HIRL Rwys 6-24, 14-32  
TDZI/CL Rwy 6

PATUXENT RIVER, MARYLAND

38°17'N - 76°25'W PATUXENT RIVER NAS (TRAPNELL FLD) (KNHK)

Orig 02DEC21

# TACAN Z RWY 24