

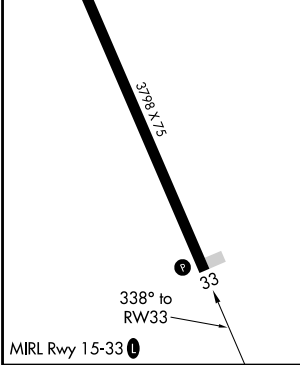
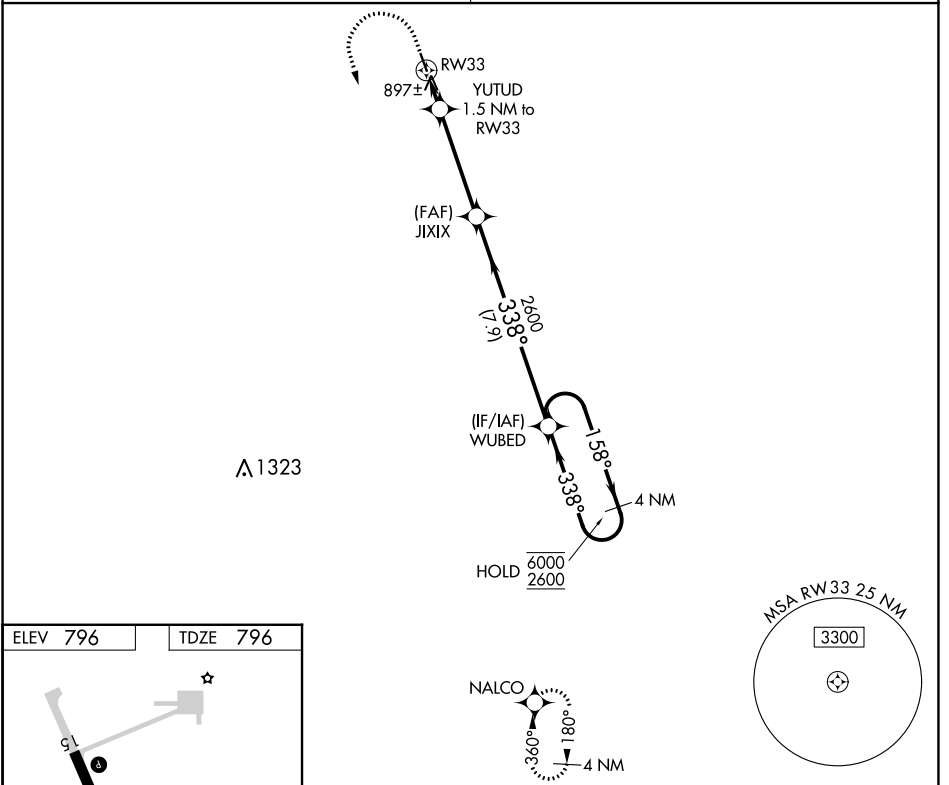
APP CRS	Rwy Idg	<b>3798</b>
<b>338°</b>	TDZE	<b>796</b>
	Apt Elev	<b>796</b>

# RNAV (GPS) RWY 33

PEMBINA MUNI (PMB)

RNP APCH-GPS.	MISSED APPROACH: Climb to 1200 then climbing left turn 2600 direct NALCO and hold.
<p><b>⚠</b> Circling Rwy 15 NA at night. Obtain local altimeter setting on CTAF; when not received, use Hallock altimeter setting and increase all MDA 60 feet and LNAV Cat C visibility <math>\frac{1}{4}</math> SM.</p>	

MINNEAPOLIS CENTER <b>132.15 269.6</b>	UNICOM <b>122.8 (CTAF) 0</b>
---	---------------------------------



ELEV 796	TDZE 796				
1200	2600	NALCO	VGSi and descent angles not coincident (VGSi Angle 3.00/TCH 26).		
YUTUD 1.5 NM to RW33		JIXIX	WUBED	4 NM Holding Pattern	
RW33		1320	2600	338°	158° → 6000
1.5		4.1 NM	7.9 NM	← 338°	2600
CATEGORY	A	B	C	D	
LNAV MDA	1160-1 364 (400-1)			NA	
<b>C</b> CIRCLING	1200-1 404 (500-1)	1260-1 464 (500-1)	1260-1½ 464 (500-1½)	NA	

NC-1, 28 NOV 2024 to 26 DEC 2024

NC-1, 28 NOV 2024 to 26 DEC 2024