

WAAS CH <b>90119</b> <b>W26A</b>	APP CRS <b>260°</b>	Rwy Idg <b>7000</b> TDZE <b>113</b> Apt Elev <b>121</b>
--	------------------------	---

# RNAV (GPS) RWY 26

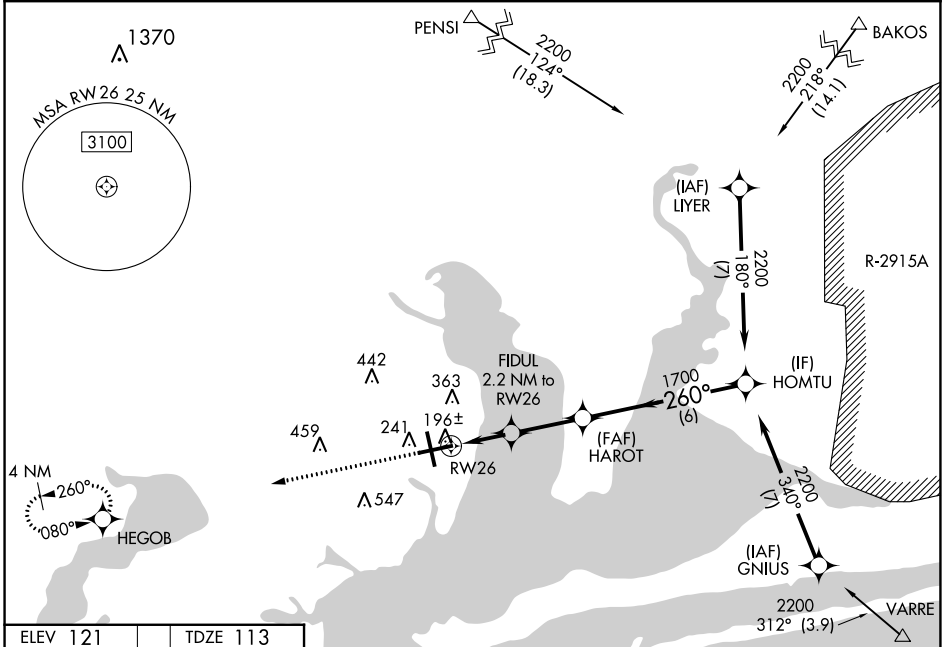
PENSACOLA INTL (PNS)

RNP APCH.

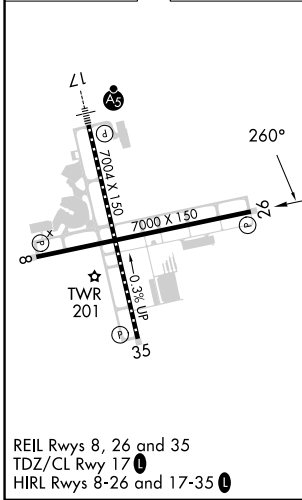
**▼** For uncompensated Baro-VNAV systems, LNAV/VNAV NA below 1°C or above 54°C. **▲** CAUTION: Intensive VFR student training in vicinity of airport. Rwy 26 helicopter visibility reduction below ¾ SM NA.

MISSED APPROACH: Climb to 2000 direct HEGOB and hold

ATIS <b>121.25</b>	PENSACOLA APP CON <b>119.0 269.375</b>	<b>PENSACOLA TOWER ★</b> <b>119.9 (CTAF) 0 257.8</b>	GND CON <b>121.9 348.6</b>	CLNC DEL <b>123.725 256.875</b>	UNICOM <b>122.95</b>
-----------------------	---	---	-------------------------------	------------------------------------	-------------------------



ELEV 121	TDZE 113
----------	----------



2000	HEGOB				
				HOMTU	2200
	*LNAV only.	FIDUL 2.2 NM to RW26	HAROT 1700		
		*0.9 NM to RW26			GP 3.00° TCH 55
		RW26	860*		
		0.9	1.3	2.6 NM	6 NM
CATEGORY	A	B	C	D	
LPV DA		363-¾	250 (300-¾)		
LNAV/VNAV DA		363-¾	250 (300-¾)		
LNAV MDA		460-1	347 (400-1)		
CIRCLING	580-1 459 (500-1)	680-1 559 (600-1)	860-2 739 (800-2)	860-2¼ 739 (800-2¼)	

SE-3, 28 NOV 2024 to 26 DEC 2024

SE-3, 28 NOV 2024 to 26 DEC 2024