

WAAS CH 86219 W08A	APP CRS 080°	Rwy Idg 7000 TDZE 97 Apt Elev 121
--	------------------------	--

RNAV (GPS) RWY 8

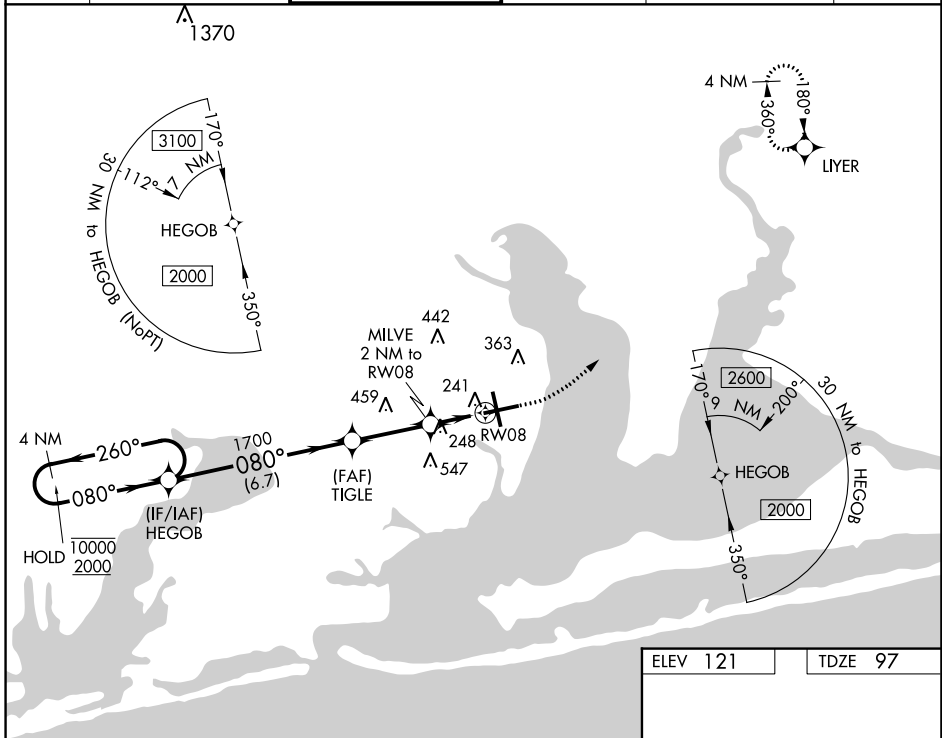
PENSACOLA INTL (PNS)

RNP APCH.

▼ Rwy 8 helicopter visibility reduction below 3/4 SM NA. For uncompensated Baro-VNAV systems, LNAV/VNAV NA below 1°C or above 54°C.
▲ CAUTION: Intensive VFR student training in vicinity of airport.

MISSED APPROACH: Climb to 600 then climbing left turn to 2200 direct LIYER and hold.

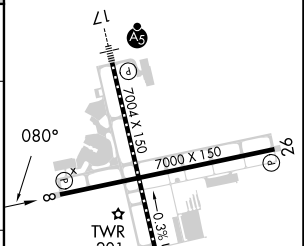
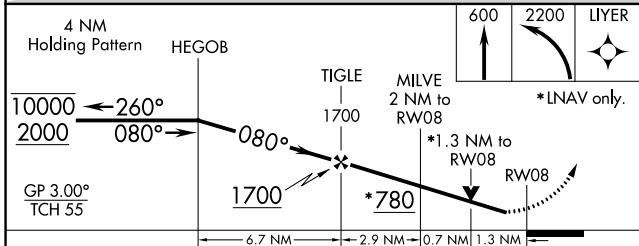
ATIS 121.25	PENSACOLA APP CON 119.0 269.375	PENSACOLA TOWER ★ 119.9 (CTAF) 0 257.8	GND CON 121.9 348.6	CLNC DEL 123.725 256.875	UNICOM 122.95
-----------------------	---	--	-------------------------------	------------------------------------	-------------------------



SE-3, 28 NOV 2024 to 26 DEC 2024

SE-3, 28 NOV 2024 to 26 DEC 2024

ELEV 121	TDZE 97
----------	---------



CATEGORY	A	B	C	D
LPV DA		347-1	250 (300-1)	
LNAV/VNAV DA		402-1	305 (300-1)	
LNAV MDA	560-1	463 (500-1)	560-1 3/8	463 (500-1 3/8)
CIRCLING	580-1 459 (500-1)	680-1 559 (600-1)	860-2 739 (800-2)	860-2 1/4 739 (800-2 1/4)

REIL Rwy 8, 26 and 35
TDZ/CL Rwy 17 **0**
HIRL Rwy 8-26 and 17-35 **0**