

20086

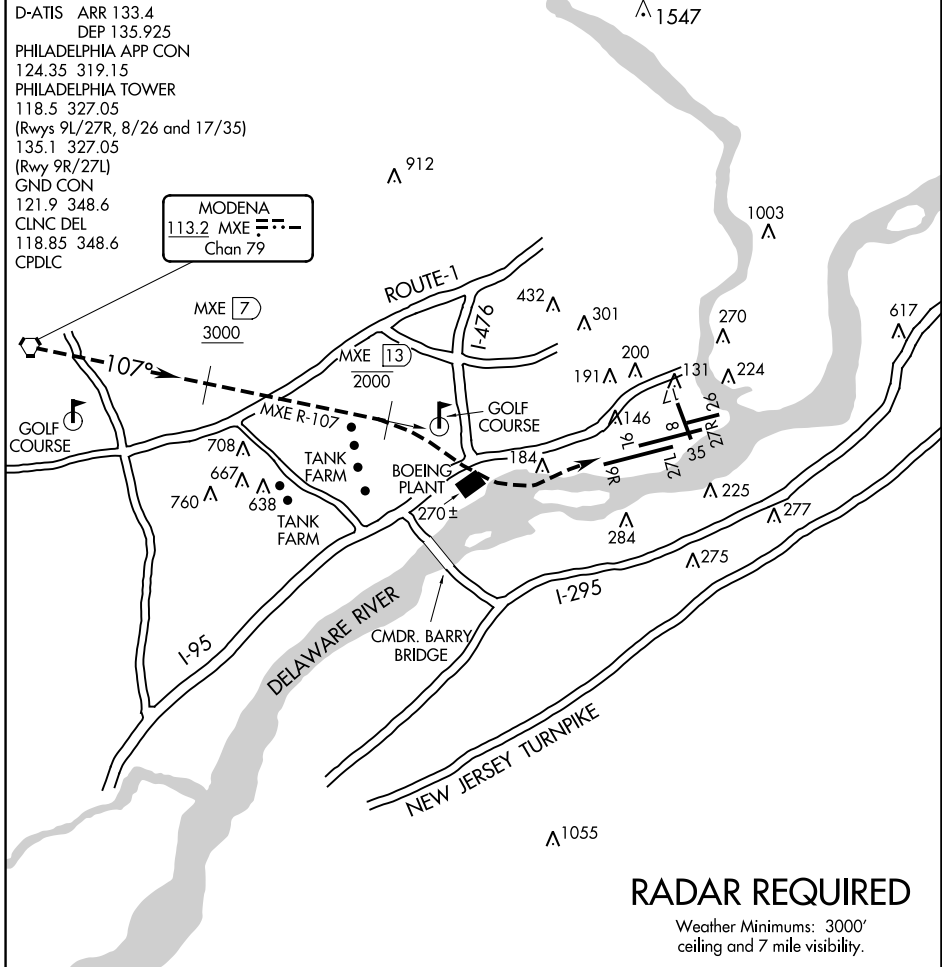
# FREEDOM VISUAL RWY 9L

AL-320 (FAA)

PHILADELPHIA INTL (PHL)  
PHILADELPHIA, PENNSYLVANIA

D-ATIS ARR 133.4  
 DEP 135.925  
 PHILADELPHIA APP CON  
 124.35 319.15  
 PHILADELPHIA TOWER  
 118.5 327.05  
 (Rwys 9L/27R, 8/26 and 17/35)  
 135.1 327.05  
 (Rwy 9R/27L)  
 GND CON  
 121.9 348.6  
 CLNC DEL  
 118.85 348.6  
 CPDLC

MODENA	
113.2	MXE
Chan 79	



NE-4, 28 NOV 2024 to 26 DEC 2024

NE-4, 28 NOV 2024 to 26 DEC 2024

1 NM	2	3	4	5	6	7	8	9	10	11	12	13	14	15	16	17	18	19	20	21	22	23
------	---	---	---	---	---	---	---	---	----	----	----	----	----	----	----	----	----	----	----	----	----	----

## FREEDOM VISUAL RWY 9L

- Expect radar vectors to the MXE R-107.
- Proceed Southeast on the MXE R-107 inbound for Rwy 9L.
- Report the airport in sight to final controller.
- Aircraft must remain on the MXE R-107 until the MXE R-107/13 DME; then proceed visually to Rwy 9L or as assigned by the tower.
- Expect aircraft to be utilizing a simultaneous visual or ILS approach to Rwy 9R during this operation.

**FREEDOM VISUAL RWY 9L** 39°52'N-75°14'W  
 Orig 25MAR99

PHILADELPHIA, PENNSYLVANIA  
 PHILADELPHIA INTL (PHL)