

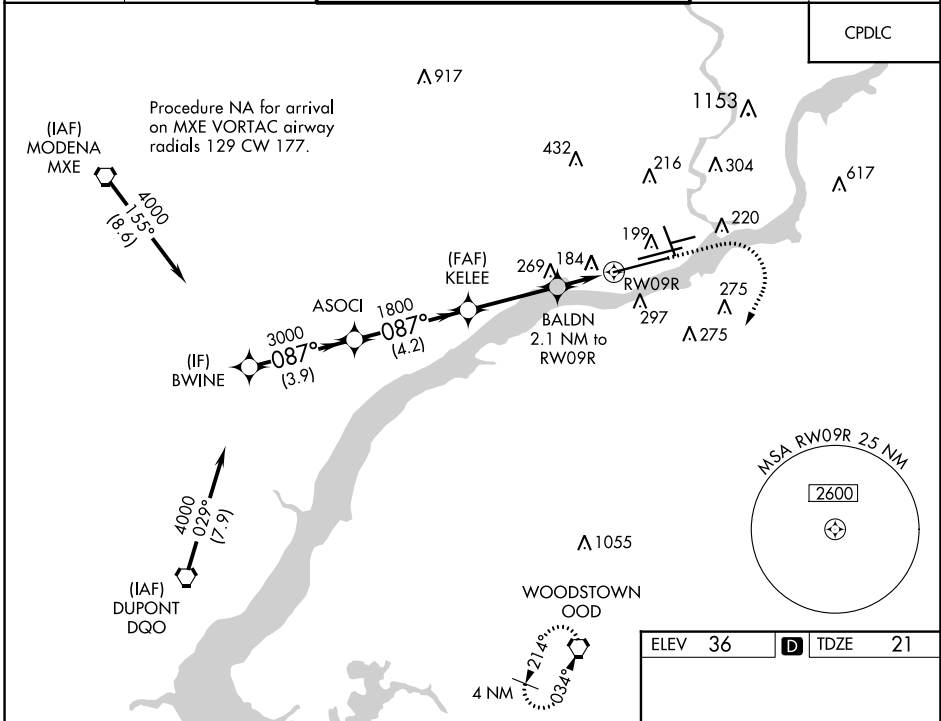
WAAS CH 40023 W09A	APP CRS 087°	Rwy Idg TDZE 21 Apt Elev 36	12000
--	------------------------	---	--------------

RNAV (GPS) Y RWY 9R

PHILADELPHIA INTL (PHL)

<p>▼ For uncompensated Baro-VNAV systems, LNAV/VNAV NA below -12°C (11°F) or above 54°C (130°F). DME/DME RNP-0.3 NA. ▲ For inop ALS, increase LNAV/VNAV visibility all Cats to RVR 5000 and LNAV Cats C/D visibility to RVR 6000.</p>	<p>ALSF-2 </p>	<p>MISSED APPROACH: Climb to 1500 then climbing right turn to 3000 direct OOD VORTAC and hold.</p>
--	---------------------	--

D-ATIS ARR 133.4 DEP 135.925	PHILADELPHIA APP CON 124.35 319.15	PHILADELPHIA TOWER 118.5 327.05 (Rwys 9L/27R, 8/26 and 17/35) 135.1 327.05 (Rwy 9R/27L)	GND CON 121.9 348.6	CLNC DEL 118.85 348.6
--	--	---	-------------------------------	---------------------------------



NE-4, 28 NOV 2024 to 26 DEC 2024

NE-4, 28 NOV 2024 to 26 DEC 2024

<p>BWINE VGSi and RNAV glidepath not coincident (VGSi Angle 3.00/TCH 72). ASOCI</p>		<p>1500</p>	<p>3000</p>	<p>OOD</p>
<p>4000 — 087° — 3000 — 1800 — *740</p>		<p>BALDN 2.1 NM to RWY09R</p>	<p>*1.1 NM to RWY09R</p>	<p>*LNAV only.</p>
<p>GP 3.00° TCH 58</p>		<p>3.9 NM</p>	<p>4.2 NM</p>	<p>3.3 NM</p>
<p>1 NM</p>		<p>1.1 NM</p>		<p>0.5% UP 5001 X 150 27R 147</p>
CATEGORY	A	B	C	D
LPV DA		221/18	200 (200-½)	
LNAV/VNAV DA		346/30	325 (400-¾)	
LNAV MDA	440/24	419 (500-½)	440/40	419 (500-¾)
CIRCLING	540-1 504 (600-1)	640-1 604 (700-1)	640-1¾ 604 (700-1¾)	720-2¼ 684 (700-2¼)
<p>TDZ/CL Rwy 9R HIRL all Rwys REIL Rwys 9L and 35</p>				