

HI-ILS or LOC/DME RWY 21L

LOC I-EMJ 110.9	APCH CRS 213°	Rwy ldg 9912
		TDZE 1084
		Arprt Elev 1084

[USAF]

LUKE AFB (KLUF)

RADAR required

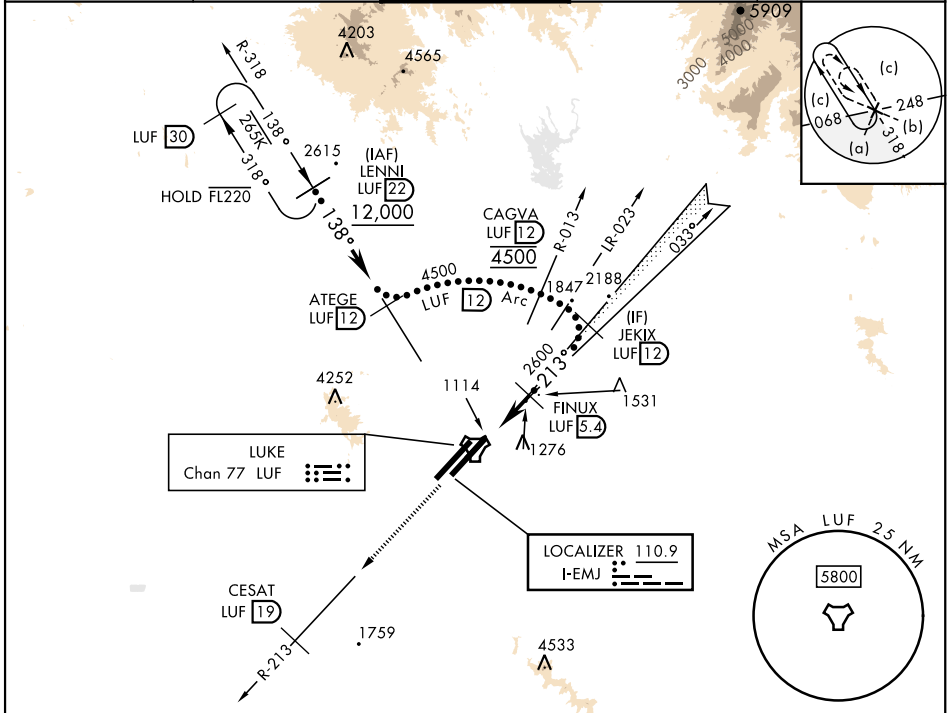
- * When ALS inop, increase vis to ¾ mile.
- ** When ALS inop, increase vis to 1½ miles.

ALSF-1



MISSED APPROACH: Climbing to 5000, intercept LUF TACAN R-213 to 19 DME (CESAT). Contact LUKE APP CON.

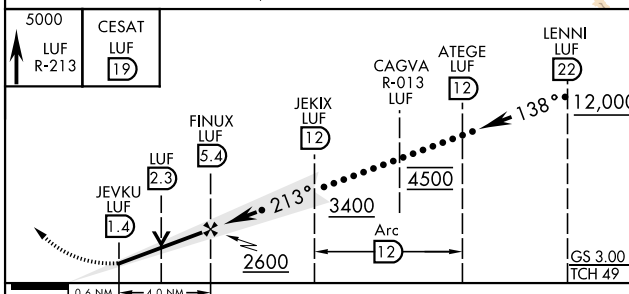
ATIS ★ 134.925 269.85	APP CON ★ 118.15 363.125	TOWER ★ 119.1 379.9	GND CON ★ 133.175 335.8	CLNC DEL ★ 126.25 273.475
---------------------------------	------------------------------------	-------------------------------	-----------------------------------	-------------------------------------



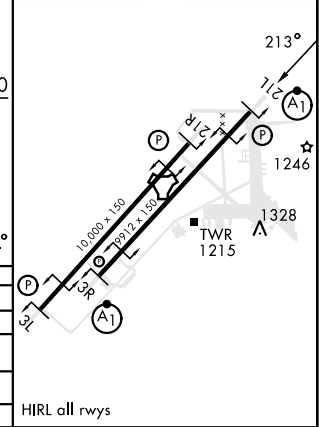
SW-4, 28 NOV 2024 to 26 DEC 2024

SW-4, 28 NOV 2024 to 26 DEC 2024

EMERG SAFE ALT 100 NM 17,000



ELEV	1084	TDZE	1084
------	------	------	------



CATEGORY	C	D	E
S-ILS 21L *	1284-½	200 (200-½)	
S-LOC/ DME 21L **	1600-1	516 (600-1)	
SIDESTEP 21R	1600-2	516 (600-2)	
CIRCLING	NOT AUTHORIZED		

HIRL all rwys

HI-ILS or LOC/DME RWY 21L