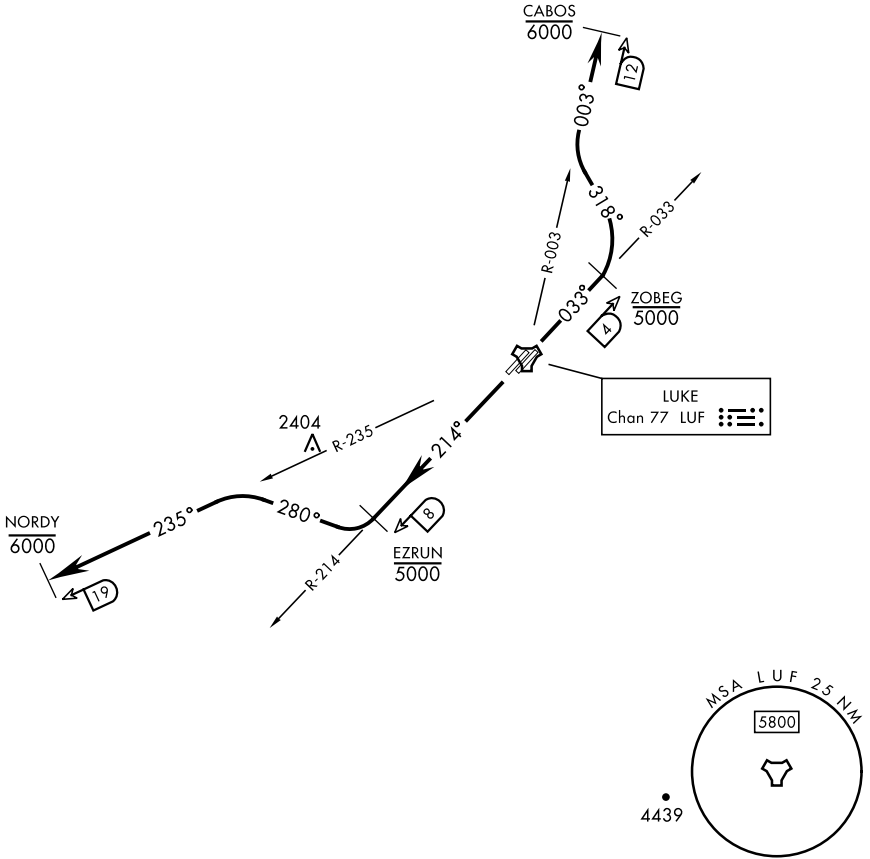


ATIS ★ 134.925 269.85
 CLNC DEL ★
 126.25 273.475
 GND CON ★
 133.175 335.8
 TOWER ★
 119.1 379.9
 DEP CON ★
 118.15 363.125

RADAR required

| Rwy | Knots | 60 | 120 | 180 | 240 | 300 | 360 |
|-------|----------|-----|-----|-----|------|------|------|
| 21L/R | V/V(fpm) | 280 | 560 | 840 | 1120 | 1400 | 1680 |

Minimum Climb Rate to 6000



DEPARTURE ROUTE DESCRIPTION

TAKEOFF RWY 3L/R: Climb on heading 033°, intercept LUF TACAN R-033 to ZOBEG, then turn left heading 318° to intercept LUF R-003 to CABOS, then via (assigned route/stereo). Cross ZOBEG at or below 5000. Cross CABOS at or below 6000, then as directed by ATC.

TAKEOFF RWY 21L/R: Climb on heading 214°, intercept LUF TACAN R-214 to EZRUN, then turn right heading 280° to intercept LUF R-235 to NORDY, then via (assigned route/stereo). Cross EZRUN at or below 5000. Cross NORDY at or below 6000, then as directed by ATC.