

PHOENIX APP CON
 124.1 256.9
 PHOENIX TOWER
 118.7 278.8 (Rwy 8-26)
 120.9 254.3 (Rwys 7R-25L, 7L-25R)
 GND CON
 119.75 269.2 (North)
 132.55 269.2 (South)
 D-ATIS
 127.575

(PINNG.PINNG1) 17117
 AL-322 (FAA)
 PHOENIX SKY HARBOR INTL (PHX)
 PHOENIX, ARIZONA

NOTE: RADAR required.
 NOTE: RNAV 1.
 NOTE: DME/DME/IRU or GPS required.
 NOTE: Turbojet aircraft only.



See following page
 for Arrival Routes.

PINNG
 17000 270K



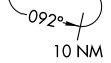
17000 292°
 (16)

HOTT
 FL250 280K
 FL220

HYBRD
 FL250
 FL220

FL220 292°
 (10)

BNNKR
 FL280 280K
 FL250



FL240 272°
 (74)

DRRVR

DRRVR TRANSITION (DRRVR.PINNG1)
HOTT TRANSITION (HOTT.PINNG1)

NOTE: Chart not to scale.

(CONTINUED ON FOLLOWING PAGE)

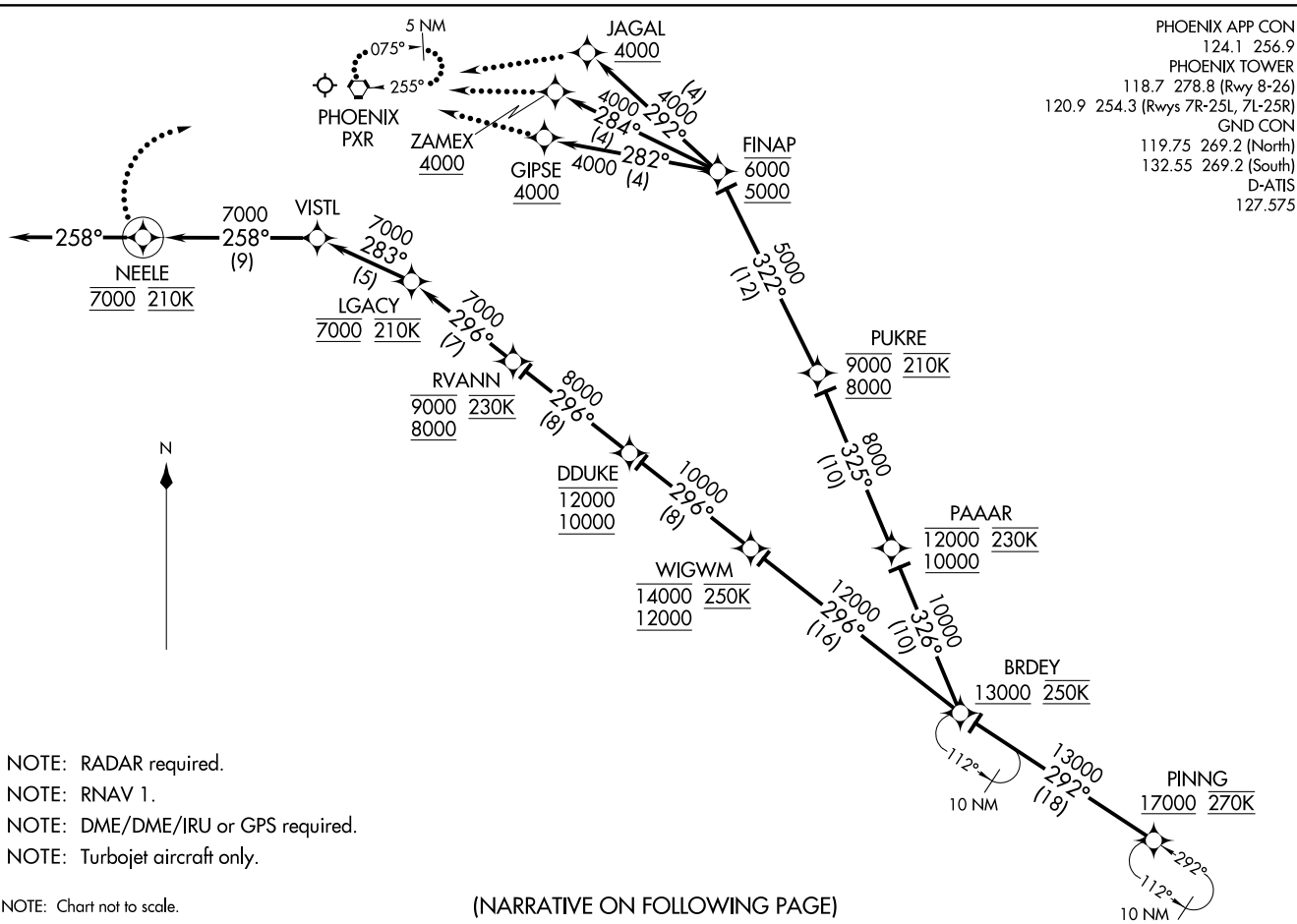
PINNG ONE ARRIVAL (RNAV) Transition Routes
 (PINNG.PINNG1) 13SEP14
 PHOENIX, ARIZONA
 PHOENIX SKY HARBOR INTL (PHX)

PHOENIX APP CON
 124.1 256.9
 PHOENIX TOWER
 118.7 278.8 (Rwy 8-26)
 120.9 254.3 (Rwys 7R-25L, 7L-25R)
 GND CON
 119.75 269.2 (North)
 132.55 269.2 (South)
 D-ATIS
 127.575

(PINGG.PINNG1) 17117

AL-322 (FAA)
Arrival Routes

PHOENIX SKY HARBOR INTL (PHX)
PHOENIX, ARIZONA



- NOTE: RADAR required.
- NOTE: RNAV 1.
- NOTE: DME/DME/IRU or GPS required.
- NOTE: Turbojet aircraft only.

NOTE: Chart not to scale.

(NARRATIVE ON FOLLOWING PAGE)

PINNG ONE ARRIVAL (RNAV) Arrival Routes
(PINGG.PINNG1) 13SEP14

PHOENIX, ARIZONA
PHOENIX SKY HARBOR INTL (PHX)

ARRIVAL ROUTE DESCRIPTION

From PINNG on track 292° to cross BRDEY at/above 13000 and at 250K.

LANDING RUNWAYS 7L, 7R, 8: From BRDEY on track 296° to cross WIGWM at/above 12000 and at/below 14000 and at 250K, then on track 296° to cross DDUKE at/above 10000 and at/below 12000, then on track 296° to cross RVANN at/above 8000 and at/below 9000 and at 230K, then on track 296° to cross LGACY at 7000 and at 210K, then on track 283° to VISTL, then on track 258° to cross NEELE at 7000 and at 210K, then on track 258°. Expect RADAR vectors to final approach course.

LANDING RUNWAY 25L: From BRDEY on track 326° to cross PAAAR at/above 10000 and at/below 12000 and at 230K, then on track 325° to cross PUKRE at/above 8000 and at/below 9000 and at 210K, then on track 322° to cross FINAP at/above 5000 and at/below 6000, then on track 282° track to cross GIPSE at/above 4000. Expect ILS or LOC RWY 25L approach or RADAR vectors to final approach course.

LANDING RUNWAY 25R: From BRDEY on track 326° to cross PAAAR at/above 10000 and at/below 12000 and at 230K, then on track 325° to cross PUKRE at/above 8000 and at/below 9000 and at 210K, then on track 322° to cross FINAP at/above 5000 and at/below 6000, then on track 284° to cross ZAMEX at/above 4000. Expect RNAV (GPS) Y or (RNP) Z RWY 25R approach or RADAR vectors to final approach course.

LANDING RUNWAY 26: From BRDEY on track 326° to cross PAAAR at/above 10000 and at/below 12000 and at 230K, then on track 325° to cross PUKRE at/above 8000 and at/below 9000 and at 210K, then on track 322° to cross FINAP at/above 5000 and at/below 6000, then on track 292° to cross JAGAL at/above 4000. Expect ILS or LOC RWY 26 approach or RADAR vectors to final approach course.

LOST COMMUNICATIONS

LANDING RUNWAY 7L: At NEELE turn right, intercept and execute RWY 7L ILS approach. If unable, proceed direct PXR VORTAC and hold, maintain 9000.

LANDING RUNWAY 7R: At NEELE turn right, intercept and execute RWY 7R ILS approach. If unable, proceed direct PXR VORTAC and hold, maintain 9000.

LANDING RUNWAY 8: At NEELE turn right, intercept and execute RWY 8 ILS approach. If unable, proceed direct PXR VORTAC and hold, maintain 9000.

LANDING RUNWAY 25L: At GIPSE intercept and execute RWY 25L ILS approach. If unable, proceed direct PXR VORTAC and hold, maintain 9000.

LANDING RUNWAY 25R: At ZAMEX intercept and execute RWY 25R RNAV (GPS) approach. If unable, proceed direct PXR VORTAC and hold, maintain 9000.

LANDING RUNWAY 26: At JAGAL intercept and execute RWY 26 ILS approach. If unable, proceed direct PXR VORTAC and hold, maintain 9000.

SW-4, 28 NOV 2024 to 26 DEC 2024

SW-4, 28 NOV 2024 to 26 DEC 2024