

QUAKY ONE DEPARTURE (RNAV)

AL-322 (FAA)

PHOENIX SKY HARBOR INTL (PHX)
PHOENIX, ARIZONA

D-ATIS
127.575
CLNC DEL
118.1 269.2
CPDLC
GND CON
119.75 269.2 (NORTH)
132.55 269.2 (SOUTH)
PHOENIX TOWER
118.7 278.8 (Rwy 8-26)
120.9 254.3 (Rwys 7L-25R, 7R-25L)
PHOENIX DEP CON
119.2 281.45

GRAND CANYON 
GCN

**TOP ALTITUDE:
8000**

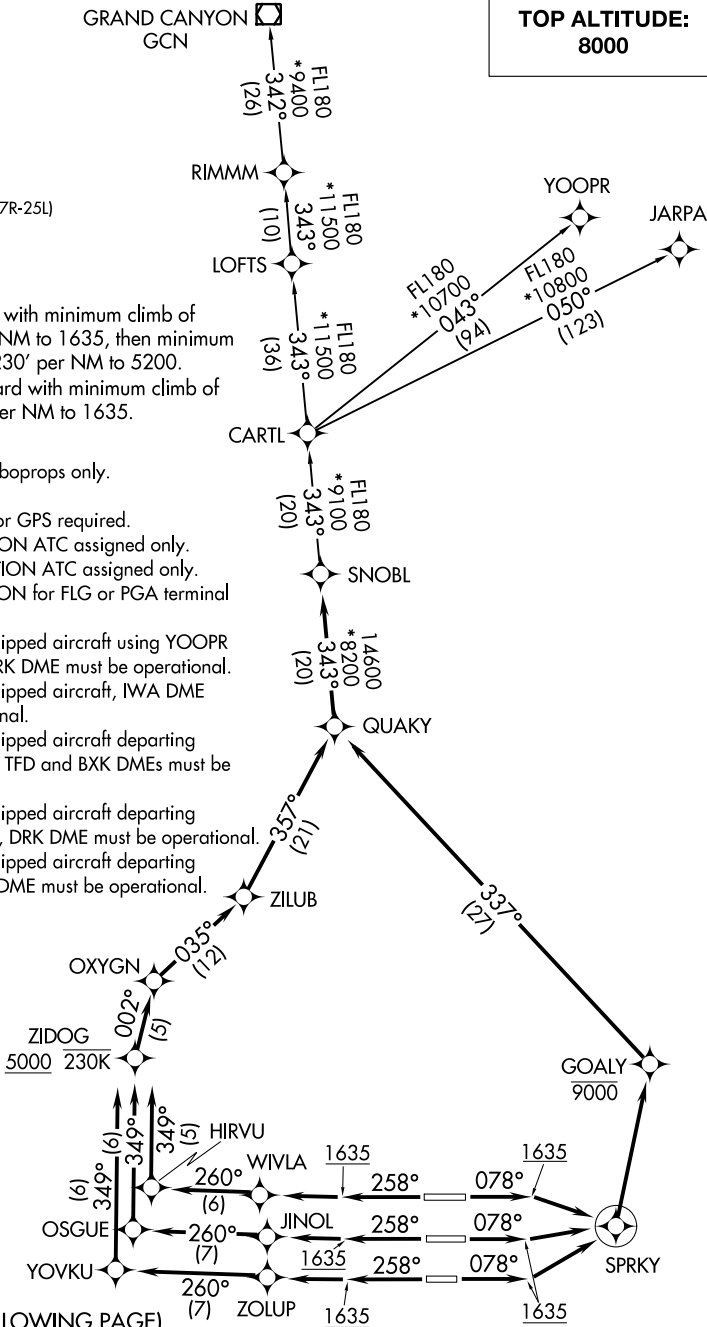
TAKEOFF MINIMUMS

Rwys 7L/R, 8: Standard with minimum climb of 500' per NM to 1635, then minimum climb of 230' per NM to 5200.
Rwys 25L/R, 26: Standard with minimum climb of 500' per NM to 1635.

- NOTE: RNAV 1.
- NOTE: Turbojets and turboprops only.
- NOTE: RADAR required.
- NOTE: DME/DME/IRU or GPS required.
- NOTE: JARPA TRANSITION ATC assigned only.
- NOTE: YOOPR TRANSITION ATC assigned only.
- NOTE: CARTL TRANSITION for FLG or PGA terminal arrivals only.
- NOTE: For non-GPS equipped aircraft using YOOPR TRANSITION, DRK DME must be operational.
- NOTE: For non-GPS equipped aircraft, IWA DME must be operational.
- NOTE: For non-GPS equipped aircraft departing Rwys 25L/R, 26, TFD and BXK DMEs must be operational.
- NOTE: For non-GPS equipped aircraft departing Rwys 8, 25R, 26, DRK DME must be operational.
- NOTE: For non-GPS equipped aircraft departing Rwys 7L/R, PXR DME must be operational.

SW-4, 28 NOV 2024 to 26 DEC 2024

SW-4, 28 NOV 2024 to 26 DEC 2024



NOTE: Chart not to scale.

(NARRATIVE ON FOLLOWING PAGE)

QUAKY ONE DEPARTURE (RNAV)

PHOENIX, ARIZONA
PHOENIX SKY HARBOR INTL (PHX)



DEPARTURE ROUTE DESCRIPTION

TAKEOFF RUNWAYS 7L/R, 8: Climb heading 078° to 1635, then direct SPRKY, then left turn direct to cross GOALY at/below 9000, then on track 337° to QUAKY, thence

TAKEOFF RUNWAY 25L: Climb heading 258° to 1635, then direct ZOLUP, then on track 260° to YOYKU, then on track 349° to cross ZIDOG at or above 5000 and at or below 230K, then on track 002° to OXYGN, then on track 035° to ZILUB, then on track 357° to QUAKY, thence

TAKEOFF RUNWAY 25R: Climb heading 258° to 1635, then direct JINOL, then on track 260° to OSGUE, then on track 349° to cross ZIDOG at or above 5000 and at or below 230K, then on track 002° to OXYGN, then on track 035° to ZILUB, then on track 357° to QUAKY, thence

TAKEOFF RUNWAY 26: Climb heading 258° to 1635, then direct WIVLA, then on track 260° to HIRVU, then on track 349° to cross ZIDOG at or above 5000 and at or below 230K, then on track 002° to OXYGN, then on track 035° to ZILUB, then on track 357° to QUAKY, thence

. . . . on track 343° to SNOBL, then on (transition). Maintain 8000, expect higher altitude 3 minutes after departure.

CARTL TRANSITION (QUAKY1.CARTL)

GRAND CANYON TRANSITION (QUAKY1.GCN)

JARPA TRANSITION (QUAKY1.JARPA)

RIMMM TRANSITION (QUAKY1.RIMMM)

YOOPR TRANSITION (QUAKY1.YOOPR)

SW-4, 28 NOV 2024 to 26 DEC 2024

SW-4, 28 NOV 2024 to 26 DEC 2024