

# HI-TACAN Y RWY 30

TACAN MUO Chan <b>87</b>	APCH CRS <b>295°</b>	Rwy Idg <b>13,510</b> TDZE <b>2996</b> Arprt Elev <b>2996</b>
-----------------------------	-------------------------	---

[USAF]

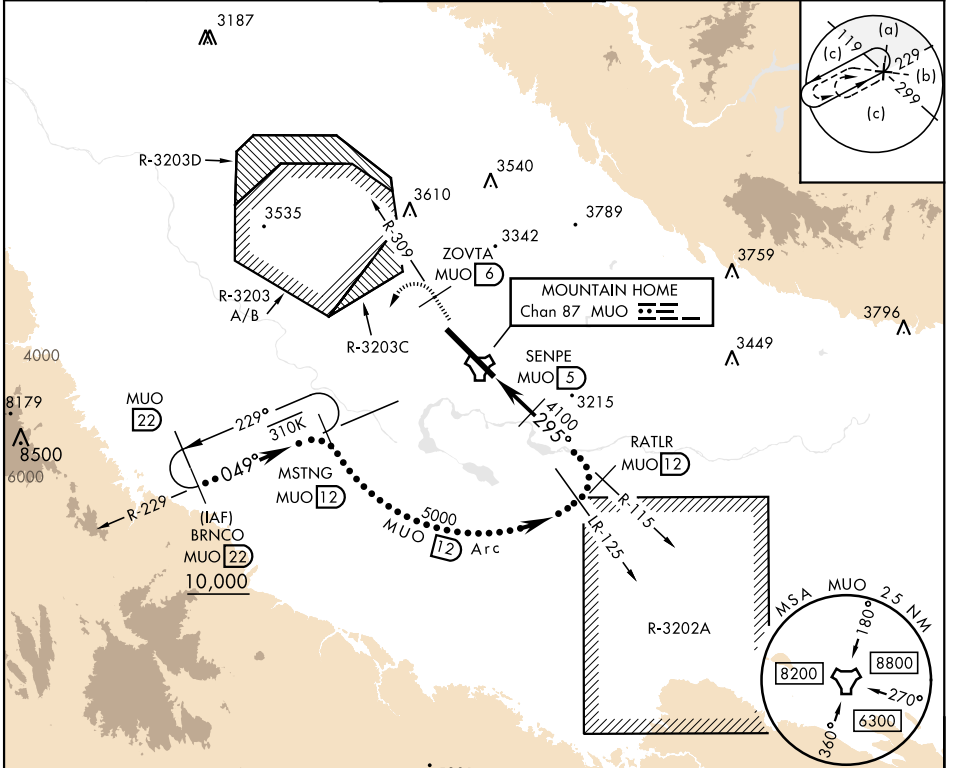
MOUNTAIN HOME AFB (KMUO)

▼ \* When ALS inop, increase CAT CDE vis to 1 3/8 miles.  
\*\* Circling NA NE of Rwy 12-30.



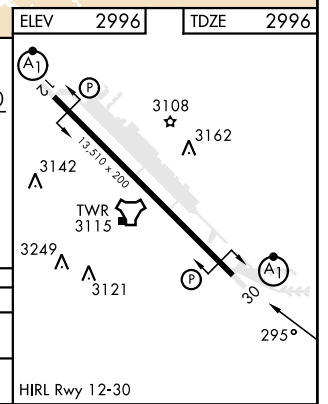
MISSED APPROACH: Climb to 10,000 via MUO R-309 to ZOVRTA/6 DME, turn left and intercept MUO R-229 to MSTNG/12 DME and hold. Continue climb in hold to 10,000.

ATIS <b>273.5</b>	MOUNTAIN HOME APP CON <b>124.8 259.1</b>	MOUNTAIN HOME TOWER <b>133.85 253.5</b>	GND CON <b>120.5 275.8</b>	CLNC DEL <b>127.1 290.425</b>
----------------------	---	--	-------------------------------	----------------------------------



EMERG SAFE ALT 100 NM 14,200

	ELEV 2996	TDZE 2996
10,000	ZOVTA MUO R-309	MSTNG MUO 12
↑	MUO 6	MUO 12
	JERLU MUO 1.1	MUO 27
	MUO TACAN	MUO 5
	SENPE MUO 5	RATLR MUO 12
	MUO 295°	MSTNG MUO 12
	4100	BRNCO MUO 22
	5000	10,000
	6100	
	049°	
	2.55°	
	40	
CATEGORY	C	D
S-30 *	3480/50	484 (500-1)
CIRCLING **	3560-1 1/2 564 (600-1 1/2)	3560-2 564 (600-2)
		3700-2 1/2 704 (800-2 1/2)



# HI-TACAN Y RWY 30

NW-1, 28 NOV 2024 to 26 DEC 2024

NW-1, 28 NOV 2024 to 26 DEC 2024