

MOUNTAIN HOME, IDAHO

ILS or LOC Z RWY 12

LOC I-MUO 110.3	APCH CRS 122°	Rwy Ldg 13,510 TDZE 2987 Arprt Elev 2996
---------------------------	-------------------------	--

[USAF]

MOUNTAIN HOME AFB (KMUO)

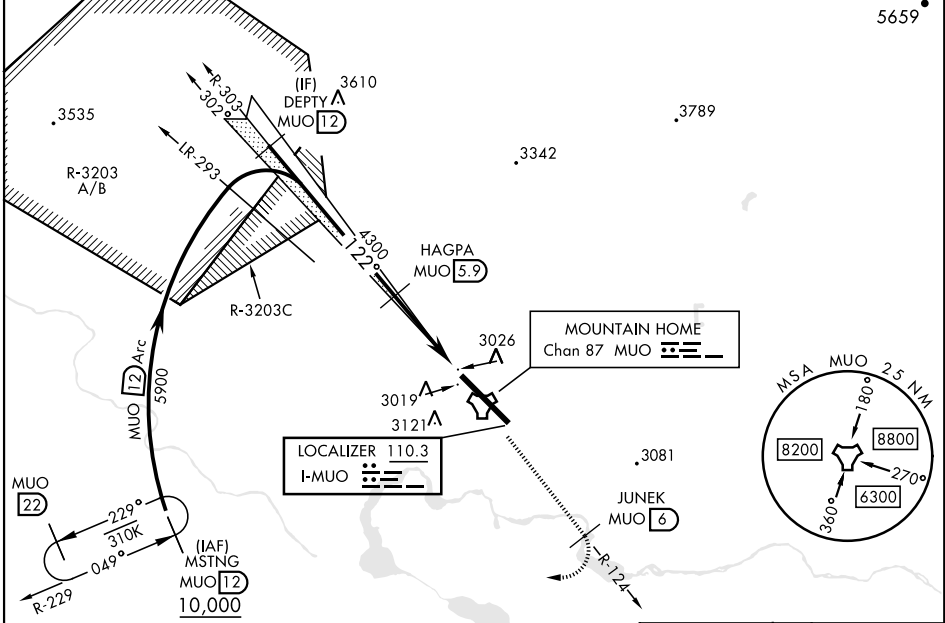
RADAR or DME required.

- ▼ * When ALS inop, increase RVR to 40, vis to 3/4 mile.
- ** When ALS inop, increase CAT AB RVR to 55 and vis to 1 mile, CAT CDE vis to 1 3/8 miles.
- *** Circling NA NE of Rwy 12-30.



MISSED APPROACH: Climb to 10,000 via MUO R-124 to JUNEK/6 DME, turn right and intercept MUO R-229 to MSTNG/12 DME and hold. Continue climb in hold to 10,000.

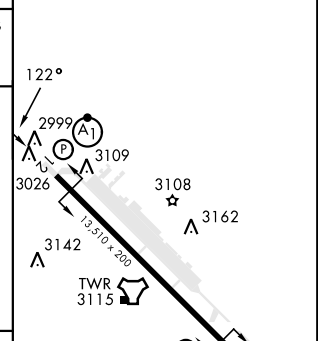
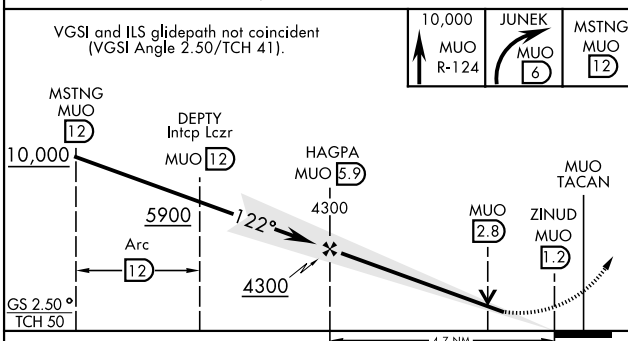
ATIS 273.5	MOUNTAIN HOME APP CON 124.8 259.1	MOUNTAIN HOME TOWER 133.85 253.5	GND CON 120.5 275.8	CLNC DEL 127.1 290.425
----------------------	---	--	-------------------------------	----------------------------------



NW-1, 28 NOV 2024 to 26 DEC 2024

NW-1, 28 NOV 2024 to 26 DEC 2024

EMERG SAFE ALT 100 NM 14,200	ELEV 2996	TDZE 2987
------------------------------	-----------	-----------



CATEGORY	A	B	C	D	E
S-ILS 12 *	3190/24		203	(200-1/2)	
S-LOC 12 **	3460/24	473 (500-1/2)	3460/50	473	(500-1)
*** CIRCLING	3520-1 524 (600-1)	3560-1 564 (600-1)	3560-1 1/2 564 (600-1 1/2)	3560-2 564 (600-2)	3700-2 1/2 704 (800-2 1/2)

HIRL Rwy 12-30

MOUNTAIN HOME, IDAHO

43°03'N-115°52'W

MOUNTAIN HOME AFB (KMUO)

Amdt 4 18JUN20

ILS or LOC Z RWY 12