

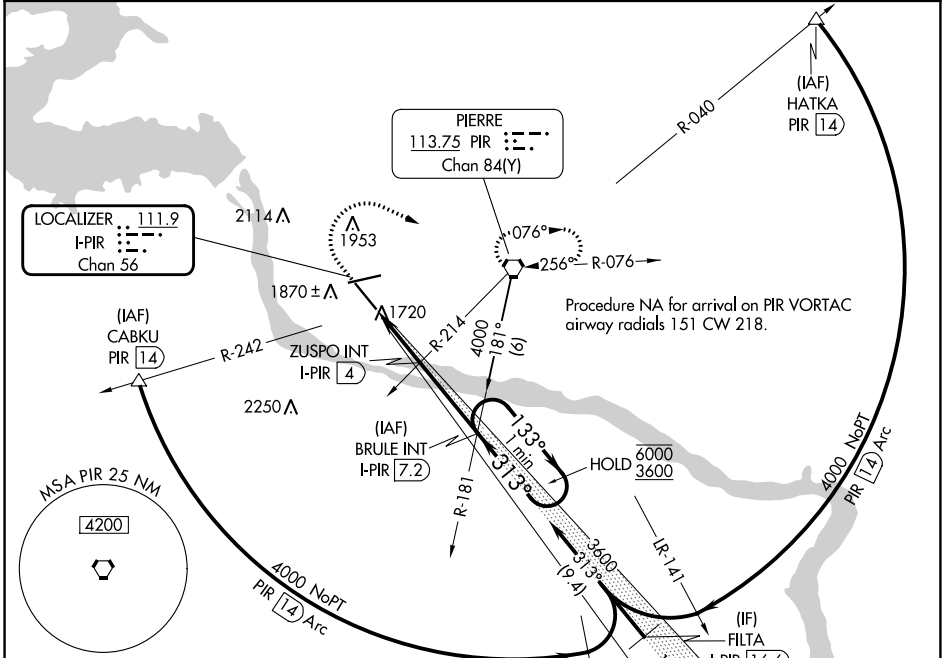
LOC/DME I-PIR 111.9 Chan 56	APP CRS 313°	Rwy Ldg TDZE Apt Elev	6900 1720 1744
--	------------------------	-----------------------------	---

ILS or LOC RWY 31

PIERRE RGNL (PIR)

<p>For inop ALS, increase S-LOC 31 Cat C/D visibility to 7/8 SM.</p>	<p>MALS R</p>	<p>MISSED APPROACH: Climb to 2400 then climbing right turn to 4000 direct PIR VORTAC and hold, continue climb-in-hold to 4000.</p>
--	---------------	--

ASOS 119.025	MINNEAPOLIS CENTER 125.1 269.1	CTAF 122.70	UNICOM 122.95
------------------------	--	-----------------------	-------------------------



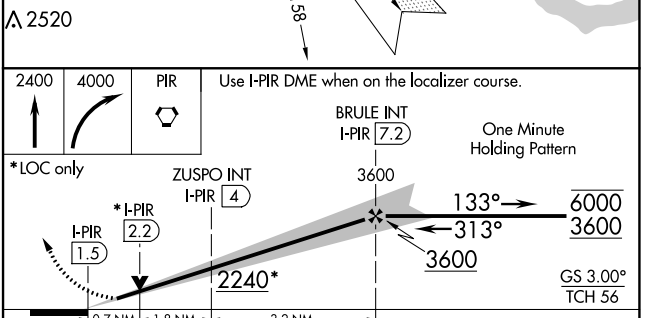
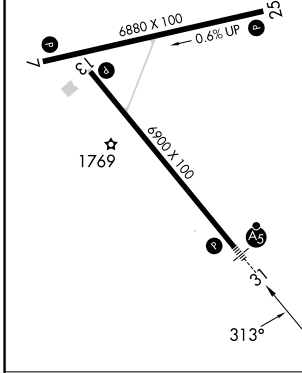
NC-1, 28 NOV 2024 to 26 DEC 2024

NC-1, 28 NOV 2024 to 26 DEC 2024

ELEV 1744	D	TDZE 1720
-----------	----------	-----------

REIL Rwy 7, 13, and 25

HIRL Rwy 7-25 and 13-31



CATEGORY	A	B	C	D
S-ILS 31	1920-1/2 200 (200-1/2)			
S-LOC 31	1980-1/2 260 (300-1/2)			
<input checked="" type="checkbox"/> CIRCLING	2240-1 496 (500-1)	2300-1 556 (600-1)	2400-1 3/4 656 (700-1 3/4)	2460-2 1/4 716 (800-2 1/4)

FAF to MAP 5.7 NM					
Knots	60	90	120	150	180
Min:Sec	5:42	3:48	2:51	2:17	1:54

PIERRE, SOUTH DAKOTA
Amdt 13 21MAY20

44°23'N-100°17'W

ILS or LOC RWY 31

PIERRE RGNL (PIR)