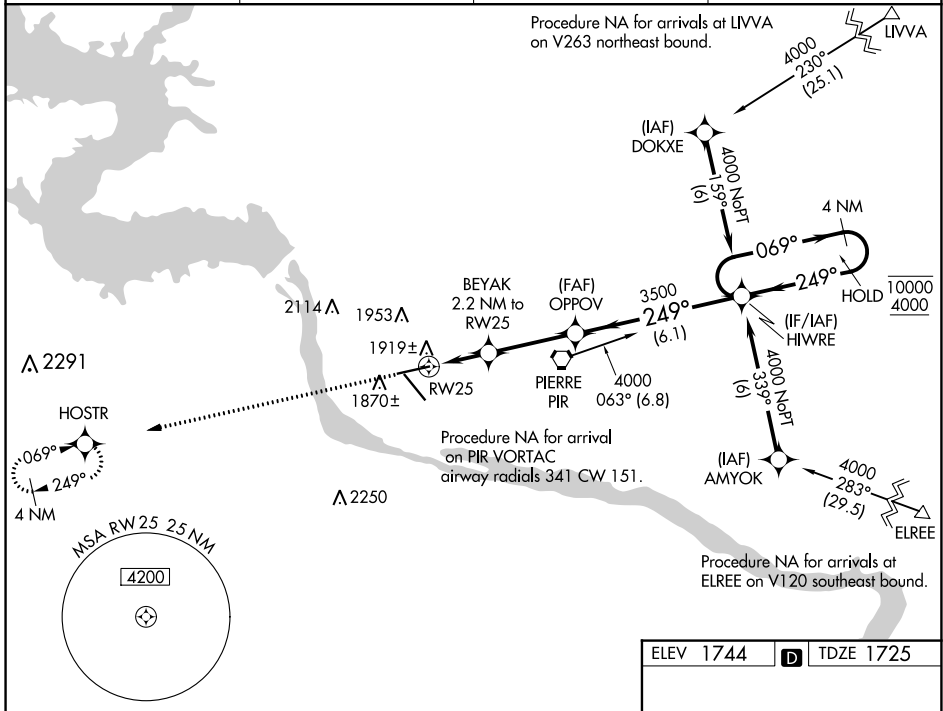


WAAS CH <b>63104</b> <b>W25A</b>	APP CRS <b>249°</b>	Rwy Idg TDZE Apt Elev	<b>6880</b> <b>1725</b> <b>1744</b>
--	------------------------	-----------------------------	---

# RNAV (GPS) RWY 25

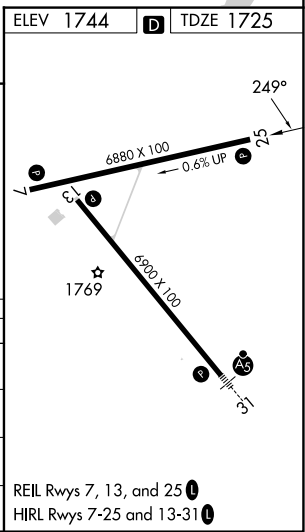
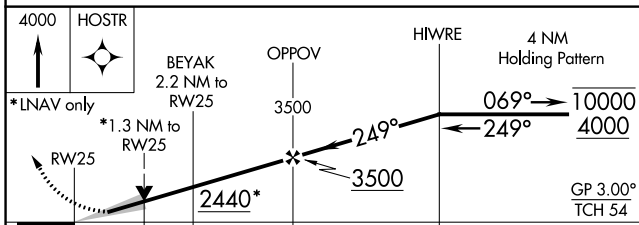
PIERRE RGNL (PIR)

RNP APCH.		MISSED APPROACH: Climb to 4000 direct HOSTR and hold.	
<p><b>V</b> For uncompensated Baro-VNAV systems, LNAV/VNAV  <b>A</b> NA below -26°C or above 54°C.</p>			
ASOS <b>119.025</b>	MINNEAPOLIS CENTER <b>125.1 269.1</b>	CTAF <b>122.70</b>	UNICOM <b>122.95</b>



NC-1, 28 NOV 2024 to 26 DEC 2024

NC-1, 28 NOV 2024 to 26 DEC 2024



CATEGORY	A	B	C	D
LPV DA	1975-1 250 (300-1)			
LNAV/VNAV DA	2179-1¾ 454 (500-1¾)			
LNAV MDA	2180-1	455 (500-1)	2180-1¼ 455 (500-1¼)	2180-1½ 455 (500-1½)
<b>C</b> CIRCLING	2240-1 496 (500-1)	2300-1 556 (600-1)	2400-1¾ 656 (700-1¾)	2460-2¼ 716 (800-2¼)

REIL Rwy 7, 13, and 25 **1**  
HIRL Rwy 7-25 and 13-31 **1**