

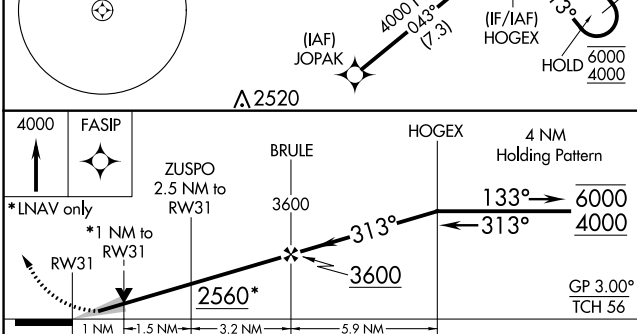
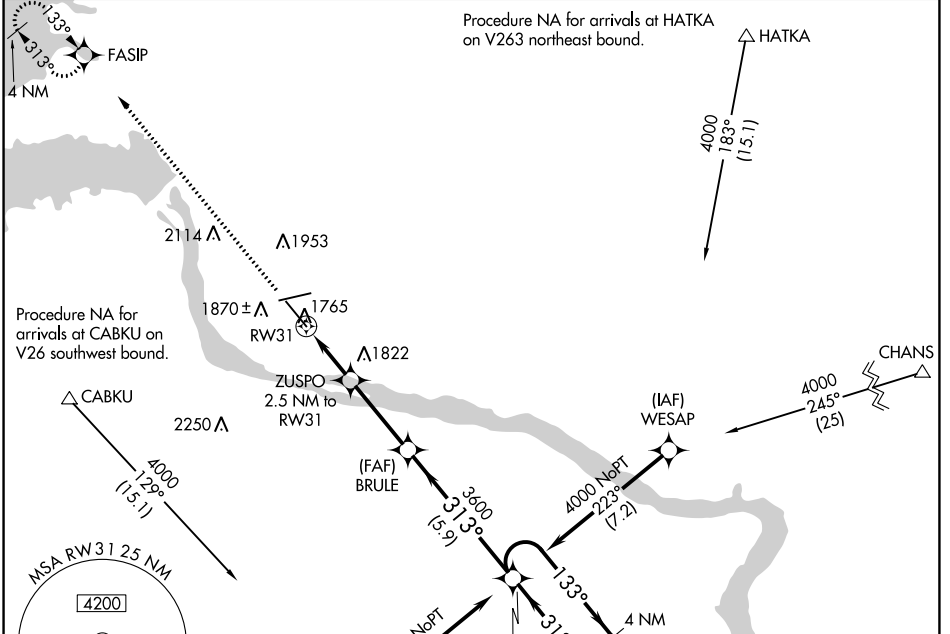
WAAS CH 65623 W31A	APP CRS 313°	Rwy Idg TDZE 1720 Apt Elev 1744
--	------------------------	---

RNAV (GPS) RWY 31

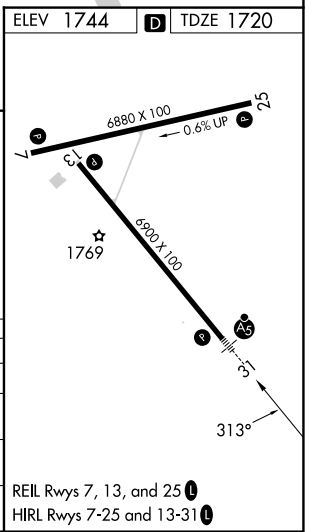
PIERRE RGNL (PIR)

RNP APCH. ▼ For uncompensated Baro-VNAV systems, LNAV/VNAV NA below -26°C or above 54°C. For inop ALS, increase LNAV/VNAV all Cats visibility to ¾ SM. ▲	MALSR AS	MISSED APPROACH: Climb to 4000 direct FASIP and hold.
--	-------------	---

ASOS 119.025	MINNEAPOLIS CENTER 125.1 269.1	CTAF 122.7	UNICOM 122.95
------------------------	--	----------------------	-------------------------



CATEGORY	A	B	C	D
LPV DA		1920-½	200 (200-½)	
LNAV/VNAV DA		1970-½	250 (300-½)	
LNAV MDA		2020-½	300 (300-½)	
CIRCLING	2240-1 496 (500-1)	2300-1 556 (600-1)	2400-1¾ 656 (700-1¾)	2460-2¼ 716 (800-2¼)



NC-1, 28 NOV 2024 to 26 DEC 2024

NC-1, 28 NOV 2024 to 26 DEC 2024