

(MRS HH2.MRSHH) 21224

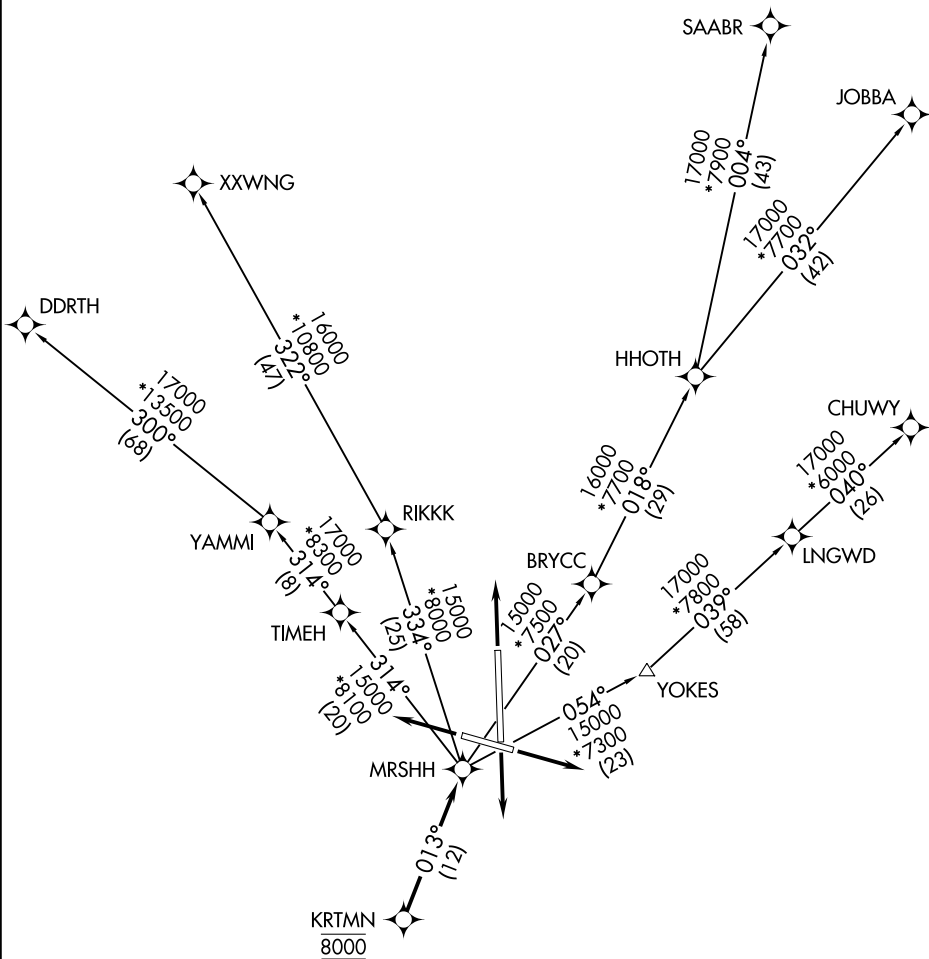
# MRS HH TWO DEPARTURE (RNAV)

AL-325 (FAA)

GREELEY-WELD COUNTY (GXY)  
GREELEY, COLORADO

CLNC DEL  
126.65  
DENVER DEP CON  
134.85 251.125

**TOP ALTITUDE:  
FL230**



SW-1, 28 NOV 2024 to 26 DEC 2024

SW-1, 28 NOV 2024 to 26 DEC 2024

### TAKEOFF MINIMUMS

Rwys 10, 17, 28, 35: Standard.

NOTE: DME/DME/IRU or GPS required.

NOTE: RNAV 1.

NOTE: Turbojets only.

NOTE: RADAR required.

NOTE: Chart not to scale.

(NARRATIVE ON FOLLOWING PAGE)

# MRS HH TWO DEPARTURE (RNAV)

(MRS HH2.MRSHH) 31 DEC 20

GREELEY, COLORADO  
GREELEY-WELD COUNTY (GXY)



DEPARTURE ROUTE DESCRIPTION

TAKEOFF RUNWAY 10: Climb on a heading between 292° CW 214° as assigned by ATC. Thence. . . .

TAKEOFF RUNWAY 17: Climb on a heading between 350° CW 212° as assigned by ATC. Thence. . . .

TAKEOFF RUNWAY 28: Climb on a heading between 294° CW 097° or between 097° CW 209° as assigned by ATC. Thence. . . .

TAKEOFF RUNWAY 35: Climb on a heading between 293° CW 169° as assigned by ATC. Thence. . . .

. . . . expect RADAR vectors to cross KRTMN at 8000 then on track 013° to MRSHH, then on (transition) maintain FL230 or filed lower altitude. Expect higher filed altitude ten minutes after departure.

CHUWY TRANSITION (MRS HH2.CHUWY)

DDRTH TRANSITION (MRS HH2.DDRTH)

JOBBA TRANSITION (MRS HH2.JOBBA)

SAABR TRANSITION (MRS HH2.SAABR)

XXWNG TRANSITION (MRS HH2.XXWNG)

SW-1, 28 NOV 2024 to 26 DEC 2024

SW-1, 28 NOV 2024 to 26 DEC 2024