


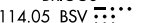
# ALLEGHENY NINE DEPARTURE


**TOP ALTITUDE:  
3000**

ATIS  
120.55  
GND CON  
121.7  
ALLEGHENY TOWER  
121.1 239.0  
PITTSBURGH DEP CON  
119.35 285.575 337.4

AKRON  
114.4 ACO   
Chan 91

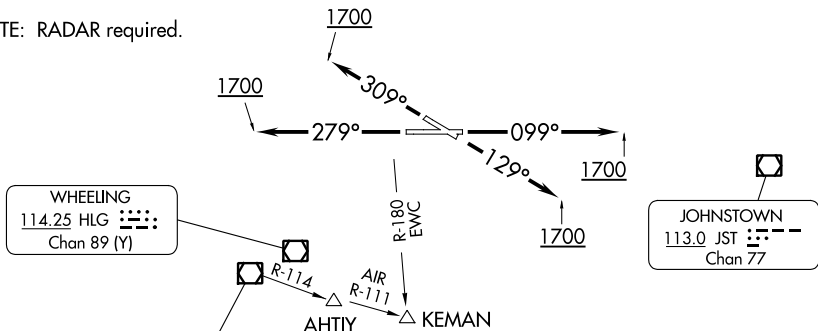
FRANKLIN  
109.6 FKL 


BRIGGS  
114.05 BSV   
Chan 87 (Y)

ELLWOOD CITY  
115.8 EWC   
Chan 105


TYROO 

NOTE: RADAR required.

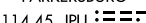


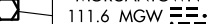
WHEELING  
114.25 HLG   
Chan 89 (Y)

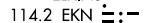
JOHNSTOWN  
113.0 JST   
Chan 77

BELLAIRE  
117.1 AIR   
Chan 118

**TAKEOFF MINIMUMS**  
Rwys 10, 28, 31: Standard.  
Rwy 13: Standard with minimum  
climb of 205' per NM to 1800.

PARKERSBURG  
114.45 JPU   
Chan 91(Y)

MORGANTOWN  
111.6 MGW   
Chan 53

ELKINS  
114.2 EKN   
Chan 89

**DEPARTURE ROUTE DESCRIPTION**

TAKEOFF RUNWAY 10: Climb heading 099° until 1700 thence....  
TAKEOFF RUNWAY 13: Climb heading 129° until 1700 thence....  
TAKEOFF RUNWAY 28: Climb heading 279° until 1700 thence....  
TAKEOFF RUNWAY 31: Climb heading 309° until 1700 thence....

....expect vectors to assigned route/fix. Maintain 3000. Expect further clearance to requested altitude 10 minutes after departure.

NOTE: Chart not to scale.

# ALLEGHENY NINE DEPARTURE

NE-4, 28 NOV 2024 to 26 DEC 2024

NE-4, 28 NOV 2024 to 26 DEC 2024