

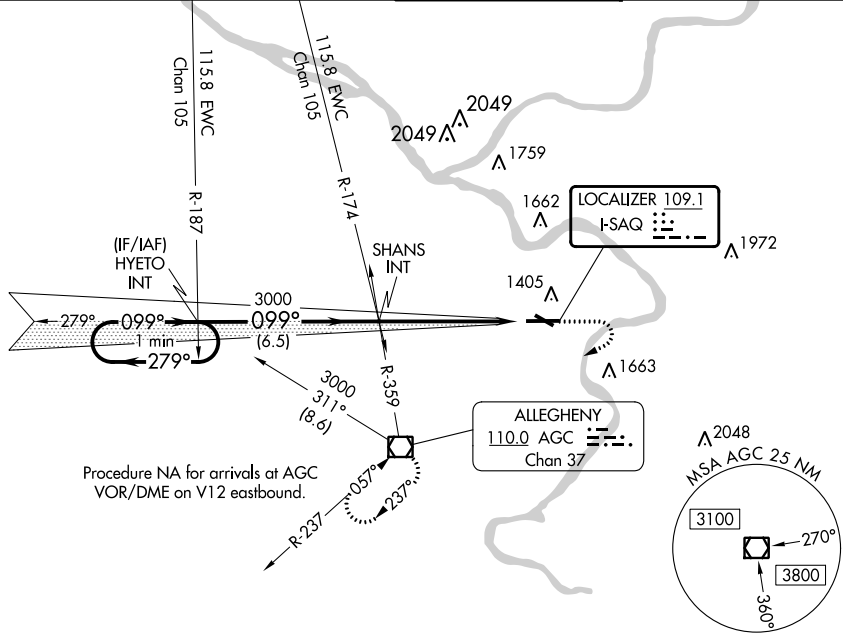
LOC I-SAQ <b>109.1</b>	APP CRS <b>099°</b>	Rwy ldg TDZE Apt Elev	<b>6501</b> <b>1251</b> <b>1252</b>
---------------------------	------------------------	-----------------------------	---

# ILS or LOC RWY 10

ALLEGHENY COUNTY (AGC)

**⚠** Circling Rwy 13 NA at night. MISSED APPROACH: Climb to 2000 then climbing right turn to 3000 direct AGC VOR/DME and hold, continue climb-in-hold to 3000.

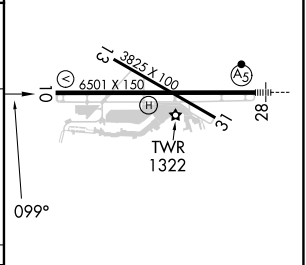
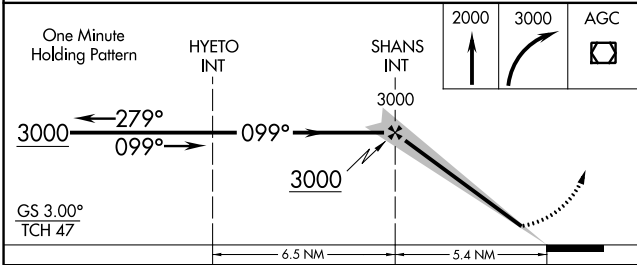
ATIS <b>120.55</b>	PITTSBURGH APP CON <b>119.35 285.575 337.4</b>	ALLEGHENY TOWER <b>121.1 239.0</b>	GND CON <b>121.7</b>
-----------------------	---	---------------------------------------	-------------------------



NE-4, 28 NOV 2024 to 26 DEC 2024

NE-4, 28 NOV 2024 to 26 DEC 2024

ELEV 1252	TDZE 1251
-----------	-----------



CATEGORY	A	B	C	D
S-ILS 10	1451-3/4		200 (200-3/4)	
S-LOC 10	1760-1	509 (600-1)	1760-1 3/8	509 (600-1 3/8)
<b>C</b> CIRCLING	1760-1	508 (600-1)	1980-2	1980-2 1/4
			728 (800-2)	728 (800-2 1/4)

REIL Rwys 10, 13, and 31	HRL Rwys 10-28 and 13-31				
FAF to MAP 5.4 NM					
Knots	60	90	120	150	180
Min:Sec	5:24	3:36	2:42	2:10	1:48