

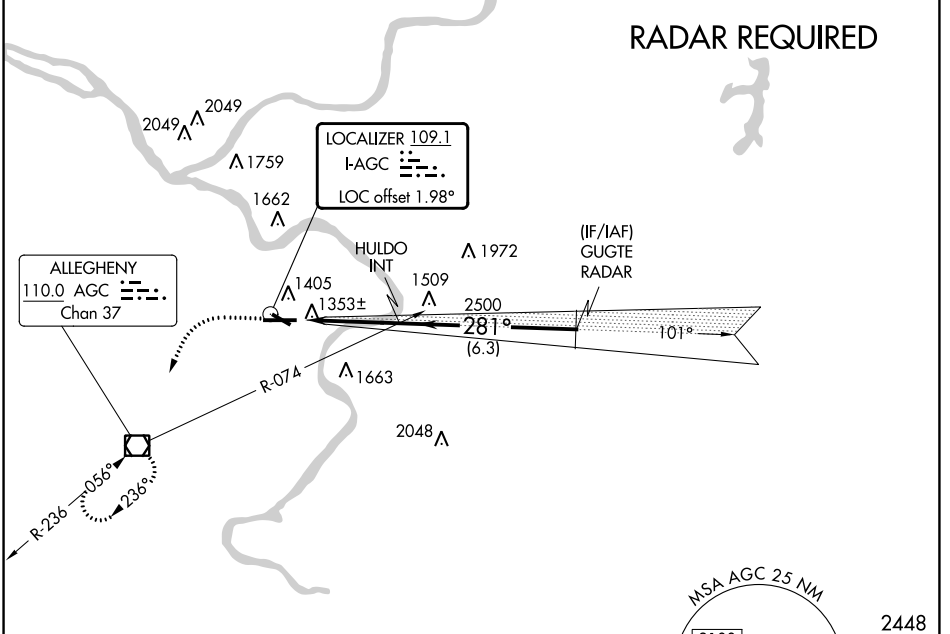
LOC I-AGC 109.1	APP CRS 281°	Rwy ldg TDZE Apt Elev	6501 1251 1252
---------------------------	------------------------	-----------------------------	---

ILS or LOC RWY 28

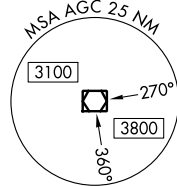
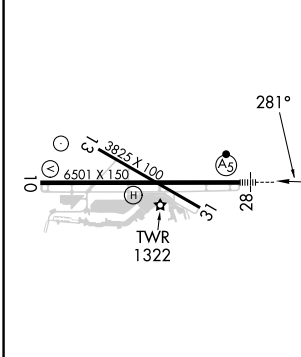
ALLEGHENY COUNTY (AGC)

<p>For inoperative MALSR, increase S-LOC Cats C and D visibility to RVR 6000. Circling Rwy 13 NA at night.</p>		<p>MISSED APPROACH: Climb to 2000 then climbing left turn to 3000 direct AGC VOR/DME and hold, continue climb-in-hold to 3000.</p>	
		<p>ATIS 120.55</p>	<p>PITTSBURGH APP CON 119.35 285.575</p>

ATIS 120.55	PITTSBURGH APP CON 119.35 285.575	ALLEGHENY TOWER 121.1 239.0	GND CON 121.7
-----------------------	---	---------------------------------------	-------------------------



ELEV 1252	TDZE 1251
-----------	-----------



2448

REIL Rwy 10, 13, and 31 HIRL Rwy 10-28 and 13-31	<p>GUGTE RADAR</p> <p>HULDO INT</p> <p>2500</p> <p>281°</p> <p>3000</p> <p>2500</p> <p>3.8 NM</p> <p>6.3 NM</p> <p>GS 3.00° TCH 51</p>				
FAF to MAP 3.8 NM	CATEGORY	A	B	C	D
	S-ILS 28	1501/24 250 (300-½)			
	S-LOC 28	1660/24	409 (500-½)	1660/40	409 (500-¾)
Knots	60	90	120	150	180
Min:Sec	3:48	2:32	1:54	1:31	1:16
<input checked="" type="checkbox"/> CIRCLING	1720-1	468 (500-1)	728 (800-2)	1980-2	1980-2¼ 728 (800-2¼)

NE-4, 28 NOV 2024 to 26 DEC 2024

NE-4, 28 NOV 2024 to 26 DEC 2024