

VOR/DME PIH 112.6 Chan 73	APP CRS 033°	Rwy Idg TDZE Apt Elev	9059 4444 4452
--	------------------------	-----------------------------	---

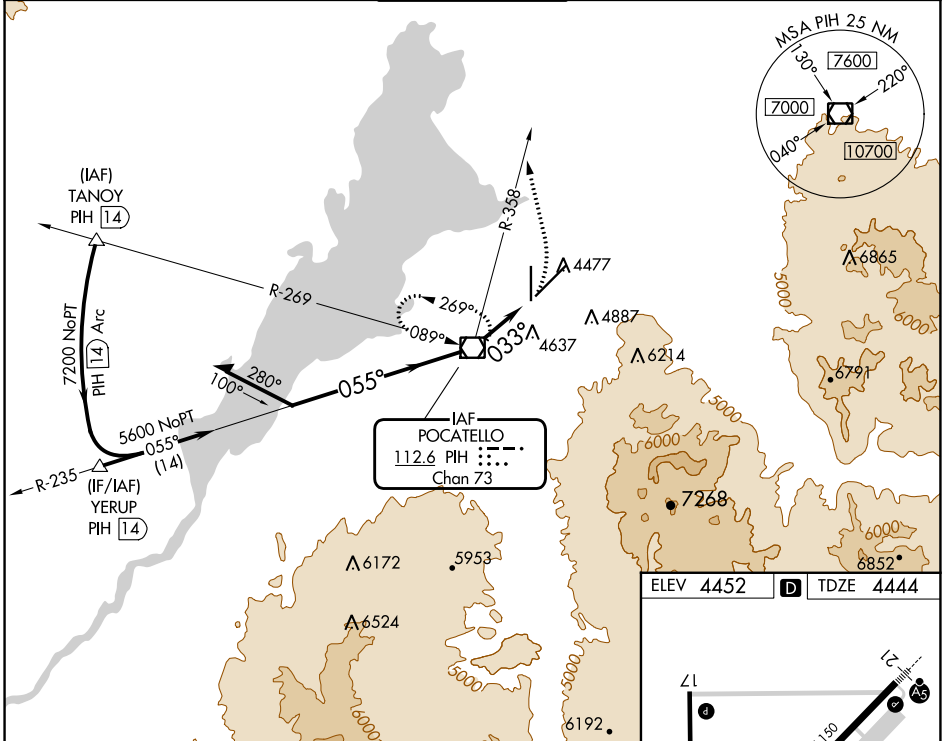
VOR RWY 3

POCATELLO RGNL (PIH)

⚠ Circling to Rwy 35 NA at night. When VGSI inop, Straight-In/Circling Rwy 3 procedure NA at night. Circling NA southeast of Rwy 3-21. Visibility reduction by helicopters NA. When local altimeter setting not received, use Idaho Falls altimeter setting and increase all MDA 140 feet, and increase visibility S-3 Cat C ½ mile and Circling Cat C ¼ mile.

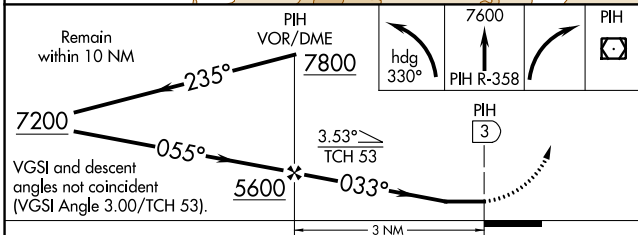
MISSED APPROACH: Climbing left turn on heading 330° and PIH VOR/DME R-358 to 7600 then right turn direct PIH VOR/DME and hold.

ATIS 135.625	SALT LAKE CENTER 128.35 239.25	POCATELLO TOWER* 119.1 (CTAF) 0 257.8	GND CON 121.9	UNICOM 122.95
------------------------	--	---	-------------------------	-------------------------



NW-1, 28 NOV 2024 to 26 DEC 2024

NW-1, 28 NOV 2024 to 26 DEC 2024



ELEV 4452	TDZE 4444
-----------	-----------

Diagram details: L1, 21, 35, 033°, 7150 x 100, 9059 x 150, TWR 4560, HIRL Rwy 3-21, MIRL Rwy 17-35, REIL Rws 3 and 17.

FAF to MAP 3 NM					
Knots	60	90	120	150	180
Min:Sec	3:00	2:00	1:30	1:12	1:00

CATEGORY	A	B	C	D
S-3	4940-1	496 (500-1)	4940-1 3/8 496 (500-1 3/8)	NA
CIRCLING	5000-1 548 (600-1)	5020-1 568 (600-1)	5060-1 3/4 608 (700-1 3/4)	NA