

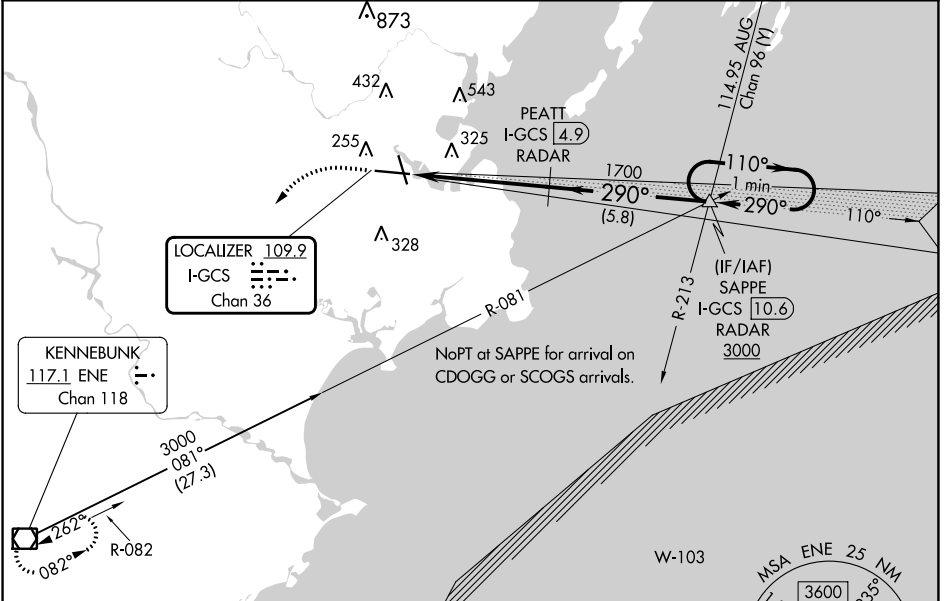
LOC/DME I-GCS <b>109.9</b> Chan <b>36</b>	APP CRS <b>290°</b>	Rwy Idg TDZE Apt Elev	<b>7200</b> <b>56</b> <b>76</b>
---	------------------------	-----------------------------	---------------------------------------

# ILS RWY 29 (SA CAT I & II)

PORTLAND INTL JETPORT (PWM)

<p><b>▽</b> DME or RADAR required. DME required when Portland approach control closed.  <b>▲</b> Procedure NA when control tower closed.          SA CAT I: Requires specific OPSPEC, MSPEC, or LOA approval and use of HUD to DH.          SA CAT II: Reduced lighting requires specific OPSPEC, MSPEC, or LOA approval and use of Autoland or HUD to touchdown.</p>	<p>MALSR  </p>	<p>MISSED APPROACH:          Climb to 700 then climbing left turn to 3000 direct ENE VOR/DME and hold.</p>

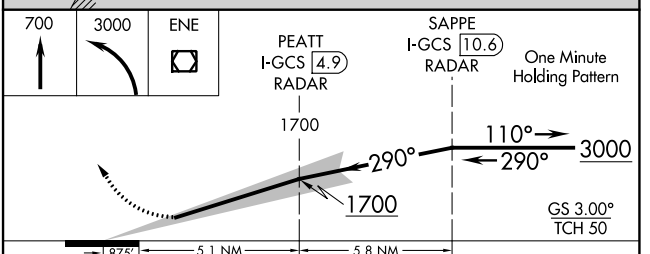
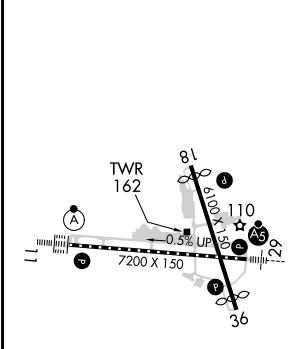
ATIS <b>119.05</b>	PORTLAND APP CON ★ <b>119.75 269.35</b>	PORTLAND TOWER ★ <b>120.9</b> (CTAF) <b>257.8</b>	GND CON <b>121.9</b>	CLNC DEL <b>121.9</b>	UNICOM <b>122.95</b>
-----------------------	--	--	-------------------------	--------------------------	-------------------------



NE-1, 28 NOV 2024 to 26 DEC 2024

NE-1, 28 NOV 2024 to 26 DEC 2024

ELEV 76	<b>D</b>	TDZE 56
---------	----------	---------



- TDZ/CL Rwy 11 **Ⓛ**
- MIRL Rwy 18-36 **Ⓛ**
- HIRL Rwy 11-29 **Ⓛ**
- REIL Rwy 18 and 36 **Ⓛ**

CATEGORY	A	B	C	D
S-ILS 29	SA CAT I	RA 206/14	150 DA 206	
S-ILS 29	SA CAT II	RA 146/12	100 DA 156	

## SA CATEGORY I & II ILS - SPECIAL AIRCREW & AIRCRAFT CERTIFICATION REQUIRED