

LOC/DME I-PWM <b>109.9</b> Chan <b>36</b>	APP CRS <b>110°</b>	Rwy Idg <b>7200</b> TDZE <b>76</b> Apt Elev <b>76</b>
---	------------------------	---

# ILS or LOC RWY 11

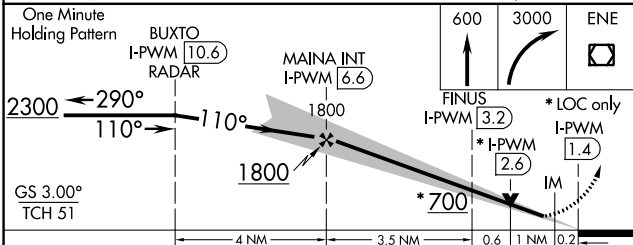
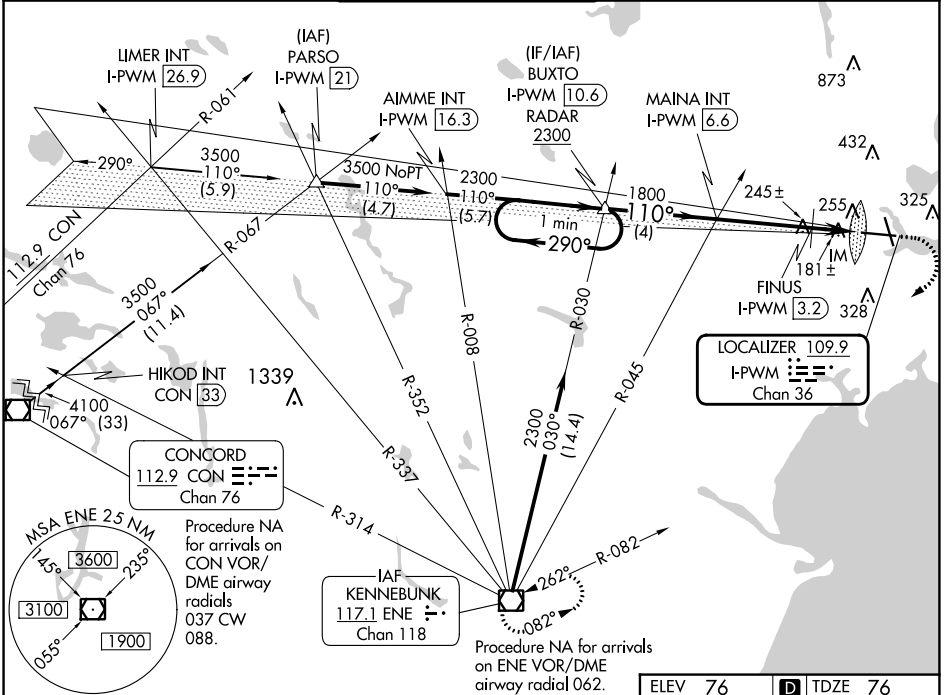
PORTLAND INTL JETPORT (PWM)

**⚠** For inoperative ALSF-2, increase S-LOC 11 Cat C/D visibility to 1½ mile. Increase FINUS fix minimums S-LOC 11 Cat C/D visibility to RVR 5500.

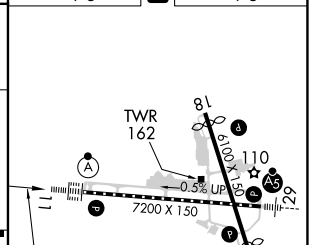
**ALSF-2**  
**(A)**

**MISSED APPROACH:** Climb to 600 then climbing right turn to 3000 direct ENE VOR/DME and hold.

ATIS <b>119.05</b>	PORTLAND APP CON * <b>119.75 269.35</b>	PORTLAND TOWER * <b>120.9 (CTAF) 257.8</b>	GND CON <b>121.9</b>	CLNC DEL <b>121.9</b>	UNICOM <b>122.95</b>
-----------------------	--	---	-------------------------	--------------------------	-------------------------



ELEV 76	<b>D</b> TDZE 76
---------	------------------



CATEGORY	A	B	C	D
S-ILS 11	276/18 200 (200-½)			
S-LOC 11	700/24	624 (700-½)	700-1¾	624 (700-1¾)
<b>C</b> CIRCLING	700-1	624 (700-1)	740-1¾ 664 (700-1¾)	860-2½ 784 (800-2½)
FINUS FIX MINIMUMS				
S-LOC 11	440/24	364 (400-½)	440/35	364 (400-¾)
<b>C</b> CIRCLING	620-1 544 (600-1)	640-1 564 (600-1)	740-1¾ 664 (700-1¾)	860-2½ 784 (800-2½)

TDZ/CL Rwy 11 <b>(L)</b> MIRL Rwy 18-36 <b>(L)</b> HIRL Rwy 11-29 <b>(L)</b> REIL Rws 18 and 36 <b>(L)</b>				
FAF to MAP 5.3 NM				
Knots	60	90	120	150 180
Min:Sec	5:18	3:32	2:39	2:07 1:46

NE-1, 28 NOV 2024 to 26 DEC 2024

NE-1, 28 NOV 2024 to 26 DEC 2024