

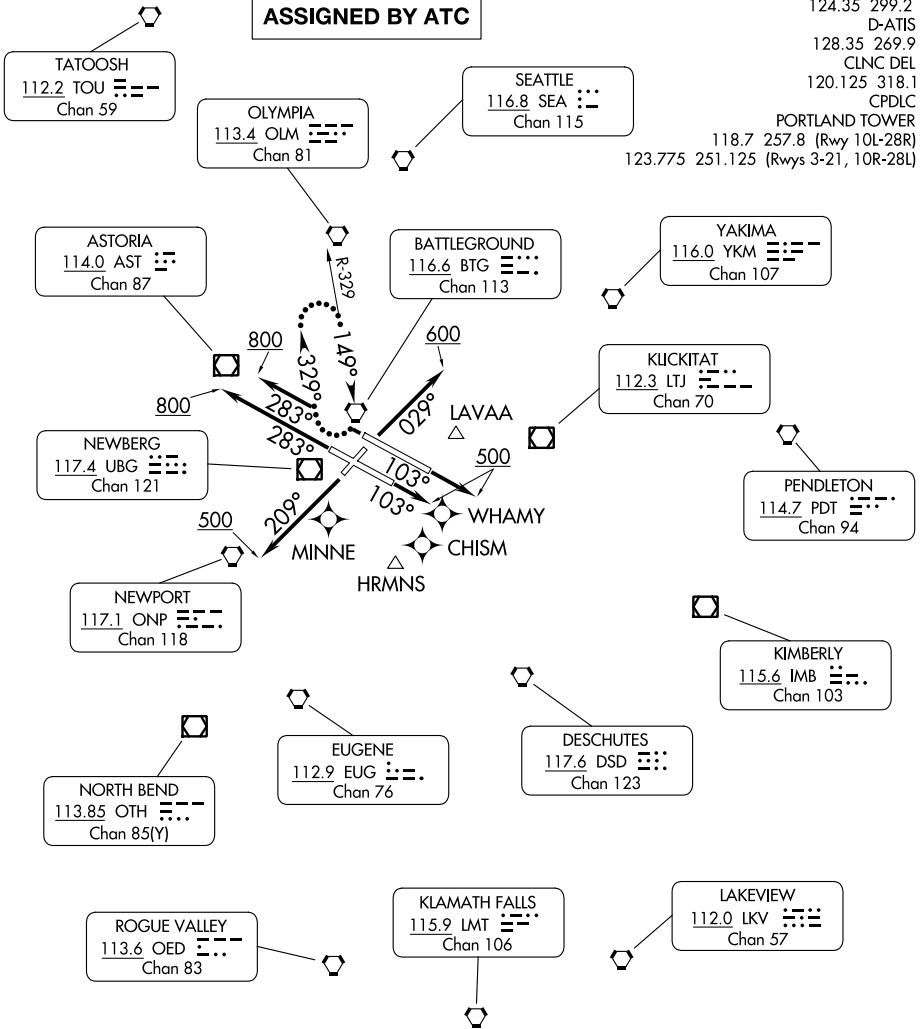
PORTLAND TWO DEPARTURE

AL-330 (FAA)

PORTLAND INTL (PDX)
PORTLAND, OREGON

**TOP ALTITUDE:
ASSIGNED BY ATC**

PORTLAND DEP CON 124.35 299.2
D-ATIS 128.35 269.9
CLNC DEL 120.125 318.1
CPDLC
PORTLAND TOWER 118.7 257.8 (Rwy 10L-28R)
123.775 251.125 (Rwys 3-21, 10R-28L)



NW-1, 28 NOV 2024 to 26 DEC 2024

NW-1, 28 NOV 2024 to 26 DEC 2024

TAKEOFF MINIMUMS

- Rwy 3: Standard with minimum climb of 375' per NM to 5300.
- Rwy 10L: Standard with minimum climb of 350' per NM to 5900.
- Rwy 10R: Standard with minimum climb of 400' per NM to 5000.
- Rwy 21: Standard with minimum climb of 430' per NM to 4000.
- Rwy 28L: Standard with minimum climb of 375' per NM to 4500.
- Rwy 28R: Standard with minimum climb of 340' per NM to 5400.

NOTE: RADAR required.

NOTE: Chart not to scale.

(CONTINUED ON FOLLOWING PAGE)

PORTLAND TWO DEPARTURE



DEPARTURE ROUTE DESCRIPTION

TAKEOFF RUNWAY 3: Climb heading 029° to 600, thence. . . .

TAKEOFF RUNWAY 10L: Climb heading 103° to 500, thence. . . .

TAKEOFF RUNWAY 10R: Climb heading 103° to 500, thence. . . .

TAKEOFF RUNWAY 21: Climb heading 209° to 500, thence. . . .

TAKEOFF RUNWAY 28L: Climb heading 283° to 800, thence. . . .

TAKEOFF RUNWAY 28R: Climb heading 283° to 800, thence. . . .

. . . . climb on assigned heading for RADAR vectors to assigned route/fix.
Maintain assigned altitude, expect filed altitude five minutes after departure.

LOST COMMUNICATIONS: If no contact with ATC within 10 NM of airport, continue climb to assigned altitude and proceed direct BTG VORTAC. Climb in BTG VORTAC holding pattern to cross BTG VORTAC at or above MCA/MEA before proceeding on course.

NW-1, 28 NOV 2024 to 26 DEC 2024

NW-1, 28 NOV 2024 to 26 DEC 2024