


APP CRS	Rwy Idg	<b>9290</b>
<b>283°</b>	TDZE	<b>31</b>
	Apt Elev	<b>31</b>

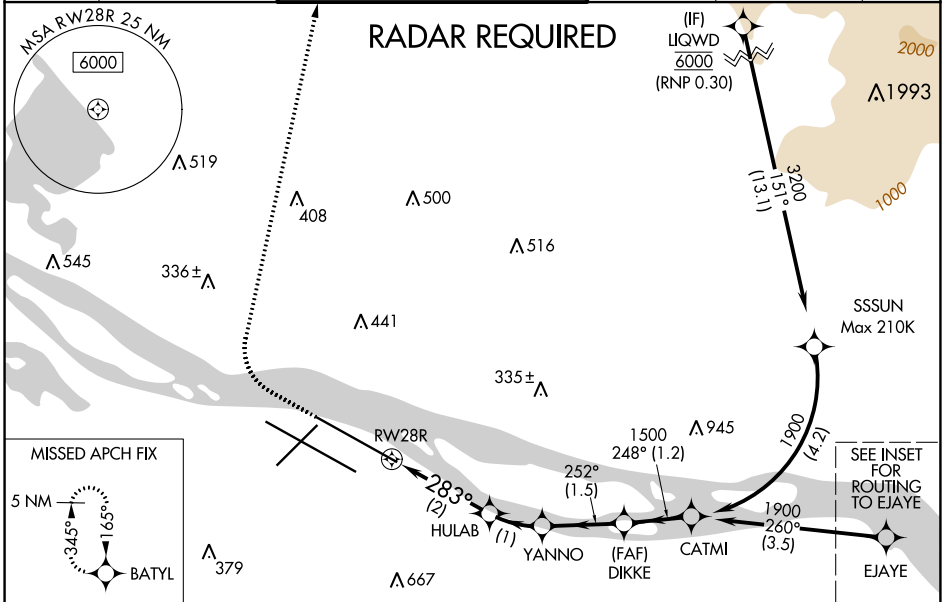
# RNAV (RNP) Y RWY 28R

PORTLAND INTL (PDX)

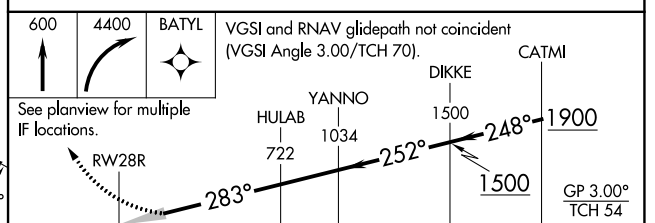
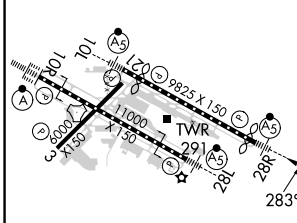
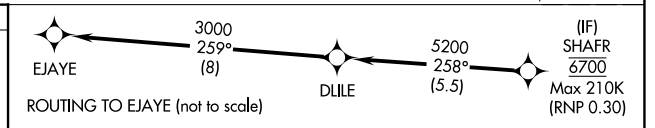
For uncompensated Baro-VNAV systems, procedure NA below -7°C (20°F) or above 54°C (130°F). For inop MALSR, increase RNP 0.20 all Cats visibility to 1 1/8 mile, and increase RNP 0.30 all Cats visibility to 1 3/8 mile. RF required. GPS required. Use of FD or AP providing RNAV track guidance required during simultaneous operations. Simultaneous approach authorized with Rwy 28L.

**MALSR**  
  
**MISSED APPROACH:**  
 Climb to 600 then climbing right turn to 4400 direct BATYL and hold, continue climb-in-hold to 4400.

D-ATIS <b>128.35</b> <b>269.9</b>	PORTLAND APP CON <b>124.35 299.2</b>	PORTLAND TOWER Rwy 10L-28R <b>118.7 257.8</b>	Rwys 3-21, 10R-28L <b>123.775 251.125</b>	GND CON <b>121.9 348.6</b>	CLNC DEL <b>120.125 318.1</b>	CPDLC
---	---	---	--	-------------------------------	----------------------------------	-------



ELEV	<b>31</b>	<b>D</b>	TDZE	<b>31</b>
------	-----------	----------	------	-----------



CATEGORY	A	B	C	D
RNP 0.20 DA		403/40	372 (400-3/4)	
RNP 0.30 DA		455/50	424 (500-1)	

PORTLAND, OREGON  
 Amdt 2 25JUN15

PORTLAND INTL (PDX)  
 45°35'N-122°36'W

## RNAV (RNP) Y RWY 28R

NW-1, 28 NOV 2024 to 26 DEC 2024

NW-1, 28 NOV 2024 to 26 DEC 2024

**AUTHORIZATION REQUIRED**