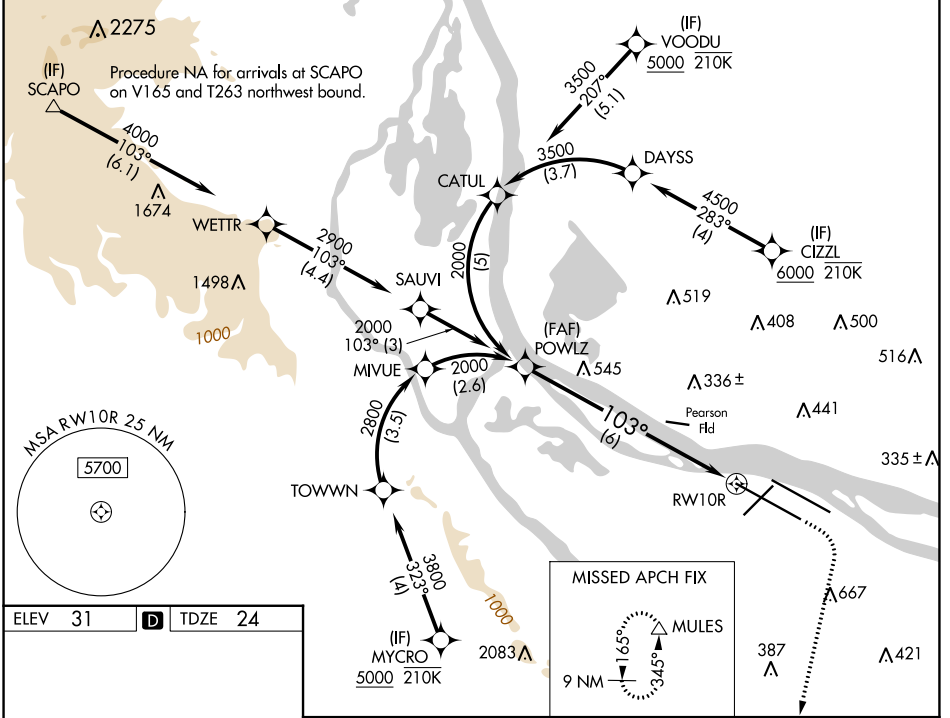


APP CRS	Rwy Idg	<b>11000</b>
<b>103°</b>	TDZE	<b>24</b>
	Apt Elev	<b>31</b>

# RNAV (RNP) Z RWY 10R

PORTLAND INTL (PDX)

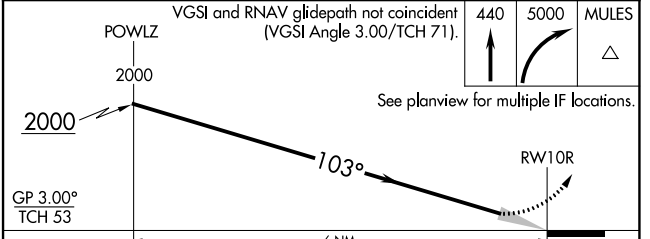
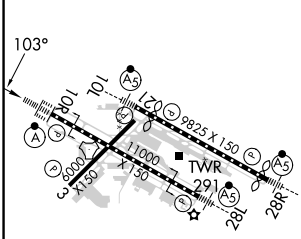
RNP AR APCH - GPS. Authorization required. From DAYSS, CATUL, or TOWNN: RF.		ALSF-2	MISSED APPROACH: Climb to 440 then climbing right turn to 5000 direct MULES and hold, continue climb-in-hold to 5000.			
<p>▼ For uncompensated Baro-VNAV systems, procedure NA below -5°C or above 54°C. Simultaneous approach authorized. For inop ALS, increase RNP 0.18 all Cats visibility to RVR 4500, increase RNP 0.30 all Cats visibility to RVR 5500.</p>						
D-ATIS	PORTLAND APP CON	PORTLAND TOWER		GND CON	CLNC DEL	CPDLC
<b>128.35</b>	<b>124.35 299.2</b>	Rwy 10L-28R	Rwys 3-21, 10R-28L	<b>121.9 348.6</b>	<b>120.125 318.1</b>	
<b>269.9</b>		<b>118.7 257.8</b>	<b>123.775 251.125</b>			



NW-1, 28 NOV 2024 to 26 DEC 2024

NW-1, 28 NOV 2024 to 26 DEC 2024

ELEV 31	<b>D</b>	TDZE 24
---------	----------	---------



CATEGORY	A	B	C	D
RNP 0.18 DA		324/24	300 (300-½)	
RNP 0.30 DA		397/35	373 (400-¾)	

**AUTHORIZATION REQUIRED**

REIL Rwys 3 and 21  
 TDZ/CL Rwy 10R  
 MIRL Rwy 3-21  
 HIRL Rwys 10L-28R and 10R-28L