

APP CRS	Rwy Idg	<b>11000</b>
<b>283°</b>	TDZE	<b>23</b>
	Apt Elev	<b>31</b>

# RNAV (RNP) Z RWY 28L

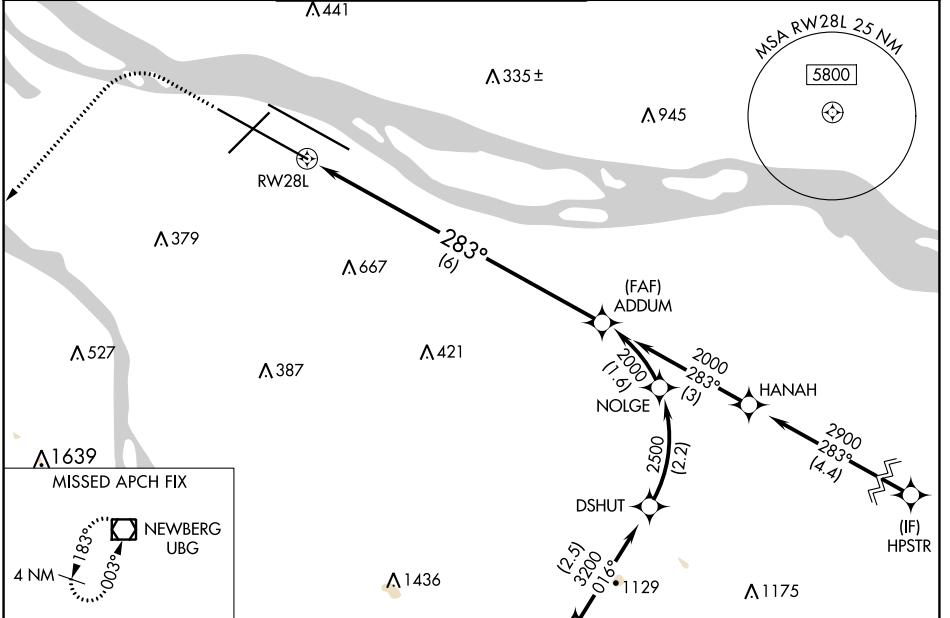
PORTLAND INTL (PDX)

RNP AR APCH - GPS. Authorization required. From DSHUT: RF.

For uncompensated Baro-VNAV systems, procedure NA below -5°C or above 54°C. Simultaneous approach authorized.

MALS/R MISSED APPROACH: Climb to 2100 then climbing left turn to 4000 direct UBG VOR/DME and hold.

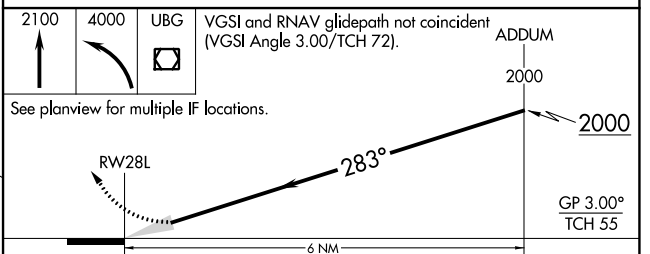
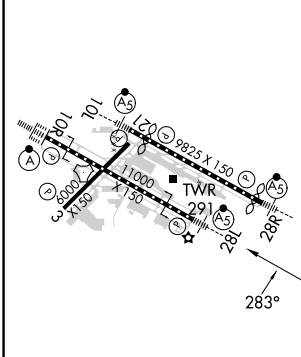
D-ATIS <b>128.35</b> <b>269.9</b>	PORTLAND APP CON <b>124.35 299.2</b>	PORTLAND TOWER Rwy 10L-28R <b>118.7 257.8</b>	Rwys 3-21, 10R-28L <b>123.775 251.125</b>	GND CON <b>121.9 348.6</b>	CLNC DEL <b>120.125 318.1</b>	CPDLC
---	---	---	--	-------------------------------	----------------------------------	-------



NW-1, 28 NOV 2024 to 26 DEC 2024

NW-1, 28 NOV 2024 to 26 DEC 2024

ELEV 31	<b>D</b>	TDZE 23
---------	----------	---------



REIL Rws 3 and 21	TDZ/CL Rwy 10R	MIRL Rwy 3-21	HIRL Rws 10L-28R and 10R-28L
See planview for multiple IF locations.			
CATEGORY	A	B	C
RNP 0.30 DA	399/60 376 (400-1¼)		
<b>AUTHORIZATION REQUIRED</b>			