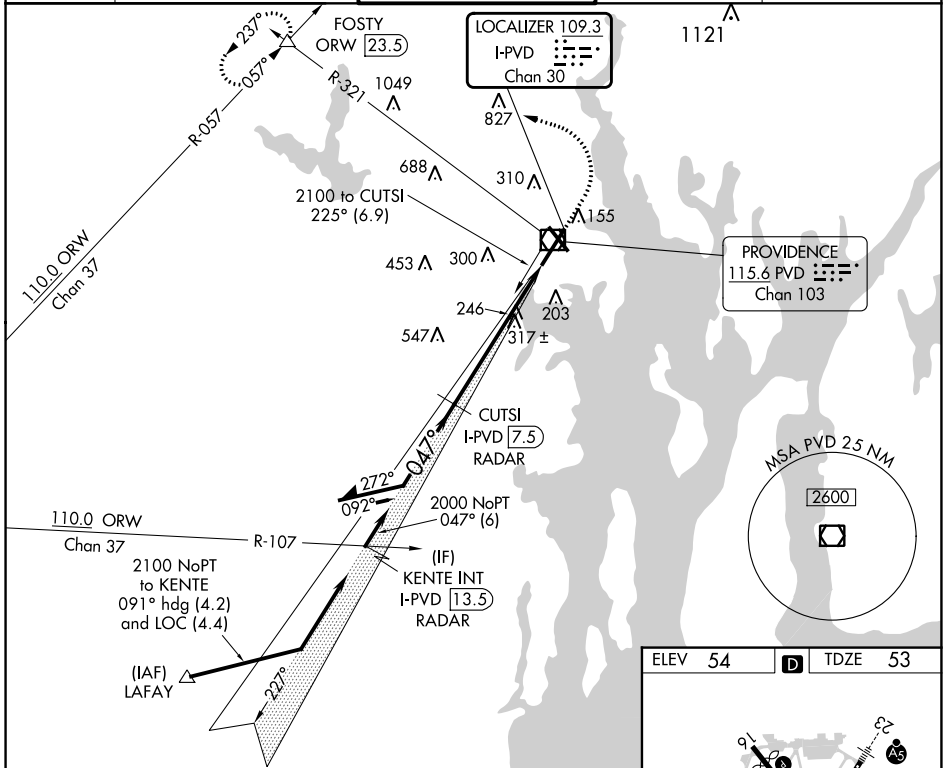


LOC/DME I-PVD 109.3 Chan 30	APP CRS 047°	Rwy Idg 8700 TDZE 53 Apt Elev 54
--	------------------------	---

ILS RWY 5 (CAT II & III)
RHODE ISLAND TF GREEN INTL (PVD)

Procedure NA when control tower closed.	ALSF-2	MISSED APPROACH: Climb to 800 then climbing left turn to 2500 on heading 270° and PVD VOR/DME R-321 to FOSTY INT/ORW 23.5 DME and hold.
--	--------	---

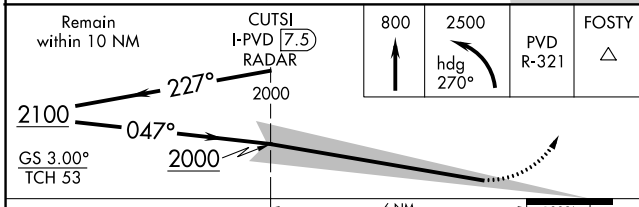
D-ATIS 124.2	PROVIDENCE APP CON * 123.675 244.875	PROVIDENCE TOWER * 120.7 (CTAF) 0 257.8	GND CON 121.9 348.6	CLNC DEL 126.65 348.6
------------------------	--	--	-------------------------------	---------------------------------



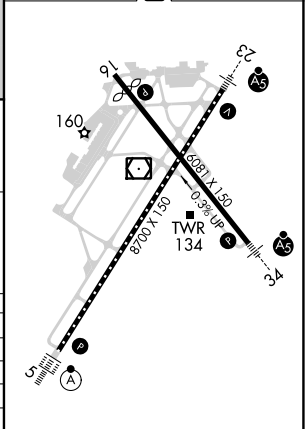
NE-1, 28 NOV 2024 to 26 DEC 2024

NE-1, 28 NOV 2024 to 26 DEC 2024

ELEV 54	D	TDZE 53
---------	---	---------



CATEGORY	A	B	C	D
S-ILS 5		CAT II RA 106/12	100 DA 153	
S-ILS 5		CAT IIIa	RVR 700	
S-ILS 5		CAT IIIb	RVR 600	
S-ILS 5		CAT IIIc	NA	



CATEGORY II & III ILS - SPECIAL AIRCREW & AIRCRAFT CERTIFICATION REQUIRED

TDZ/CL Rwy 5 **1**
REIL Rwy 16 **1**
HIRL Rwy 5-23 and 16-34 **1**