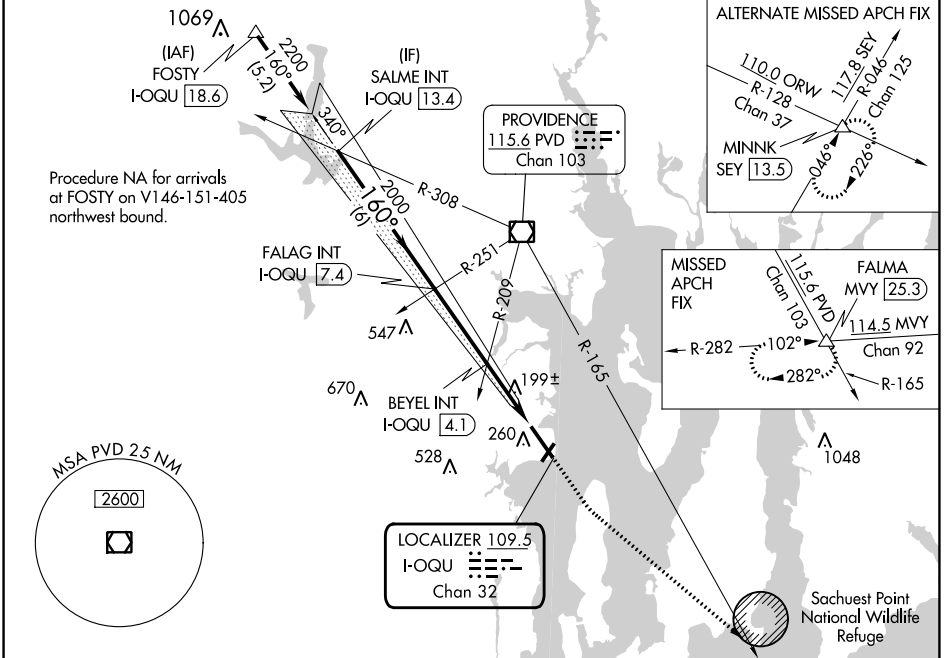


LOC/DME I-OQU 109.5 Chan 32	APP CRS 160°	Rwy ldg 7100 TDZE 18 Apt Elev 18
---	------------------------	---

ILS or LOC RWY 16

QUONSET STATE (OQU)

<p>Circling Rwy 5 NA at night. For inop ALS, increase S-LOC 16 Cat C/D visibility to 2½ SM.</p>	<p>MALS/R</p>	<p>MISSED APPROACH: Climb to 500 then climbing left turn to 3000 on heading 145° and PVD VOR/DME R-165 to FALMA and hold.</p>			
		<p>ATIS ★ 118.6</p>	<p>PROVIDENCE APP CON ★ 123.675 244.875</p>	<p>QUONSET TOWER ★ 126.35 (CTAF) 0 252.9</p>	<p>GND CON 134.5 226.675</p>



NE-1, 28 NOV 2024 to 26 DEC 2024

NE-1, 28 NOV 2024 to 26 DEC 2024

<p>VGSI and ILS glidepath not coincident (VGSI Angle 3.00/TCH 58).</p>		<p>500</p>	<p>3000</p>	<p>PVD R-165</p>	<p>FALMA</p>	<p>ELEV 18</p>	<p>TDZE 18</p>			
<p>SALME INT I-OQU 13.4</p> <p>FALAG INT I-OQU 7.4</p> <p>BEYEL INT I-OQU 4.1</p> <p>I-OQU 1.3</p> <p>I-OQU 2.4</p> <p>*840</p> <p>*LOC only</p>										
CATEGORY	A	B	C	D						
S-ILS 16	218-½ 200 (200-½)									
S-LOC 16	840-½ 822 (900-½)	840-¾ 822 (900-¾)	840-1⅞	822 (900-1⅞)						
CIRCLING	840-1¼	822 (900-1¼)	840-2½ 822 (900-2½)	880-2¾ 862 (900-2¾)						
BEYEL FIX MINIMUMS										
S-LOC 16	460-½	442 (500-½)	460-⅞	442 (500-⅞)						
CIRCLING	620-1	602 (700-1)	620-1¾ 602 (700-1¾)	880-2¾ 862 (900-2¾)						
					<p>FAF to MAP 6.1 NM</p>					
					Knots	60	90	120	150	180
					Min:Sec	6:06	4:04	3:03	2:26	2:02