

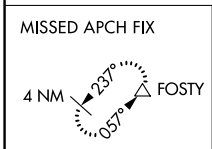
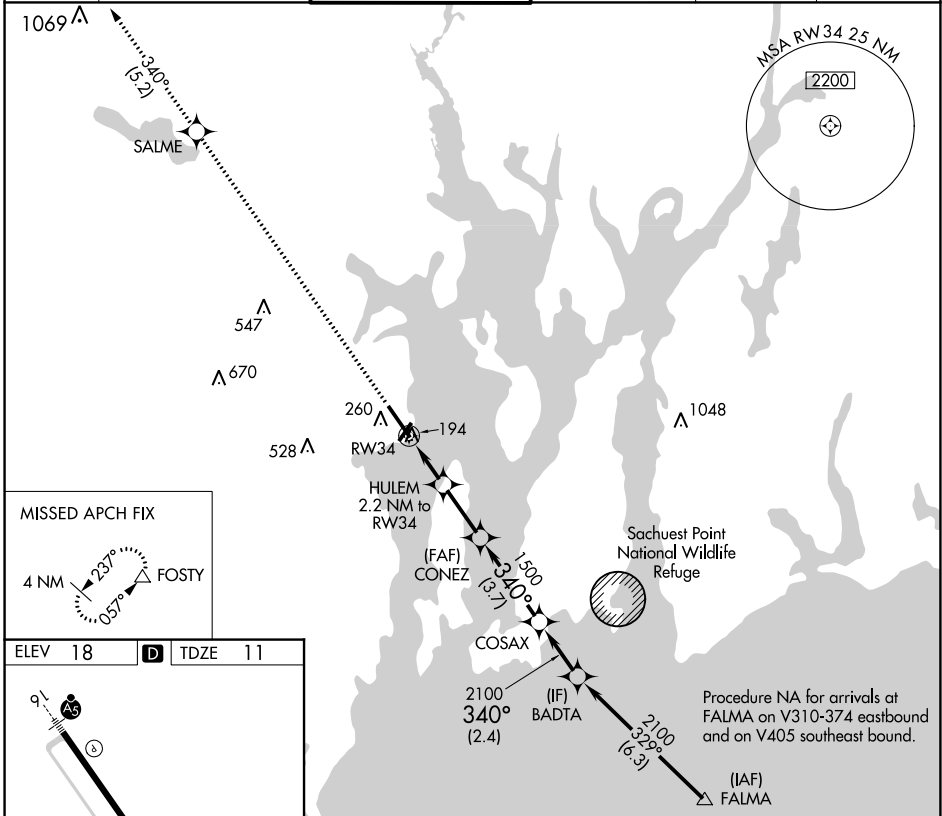
APP CRS	Rwy Idg	<b>7100</b>
<b>340°</b>	TDZE	<b>11</b>
	Apt Elev	<b>18</b>

# RNAV (GPS) RWY 34

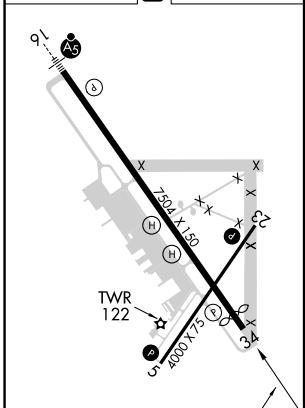
QUONSET STATE (OQU)

	Circling Rwy 5 NA at night. Rwy 34 helicopter visibility reduction below 1 SM NA. DME/DME RNP-0.3 NA.	MISSED APPROACH: Climb to 2500 direct SALME and on track 340° to FOSTY and hold.

ATIS ★	PROVIDENCE APP CON ★	QUONSET TOWER ★	GND CON	CLNC DEL	UNICOM
<b>118.6</b>	<b>123.675 244.875</b>	<b>126.35 (CTAF) 0 252.9</b>	<b>134.5 226.675</b>	<b>134.5</b>	<b>122.95</b>

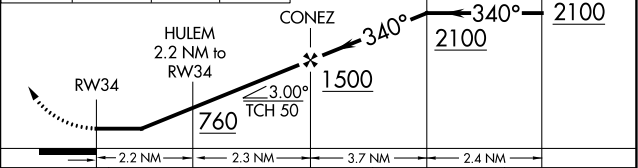


ELEV 18	<b>D</b>	TDZE 11
---------	----------	---------



HIRL Rwy 16-34 **1**  
 MIRL Rwy 5-23 **1**  
 REIL Rwy 5 and 23 **1**

2500	SALME	tr 340°	FOSTY	COSAX	BADTA
------	-------	---------	-------	-------	-------



CATEGORY	A	B	C	D
LNNAV MDA	460-1	449 (500-1)	460-1 <sup>3</sup> / <sub>8</sub>	449 (500-1 <sup>3</sup> / <sub>8</sub> )
<b>C</b> CIRCLING	620-1	602 (700-1)	620-1 <sup>3</sup> / <sub>4</sub>	880-2 <sup>3</sup> / <sub>4</sub> 862 (900-2 <sup>3</sup> / <sub>4</sub> )

NE-1, 28 NOV 2024 to 26 DEC 2024

NE-1, 28 NOV 2024 to 26 DEC 2024