

QUANTICO, VIRGINIA

RNAV (GPS) RWY 2

APCH CRS	Rwy Idg	4250
026°	TDZE	9
	Arprt Elev	10

AL-339 (USN)

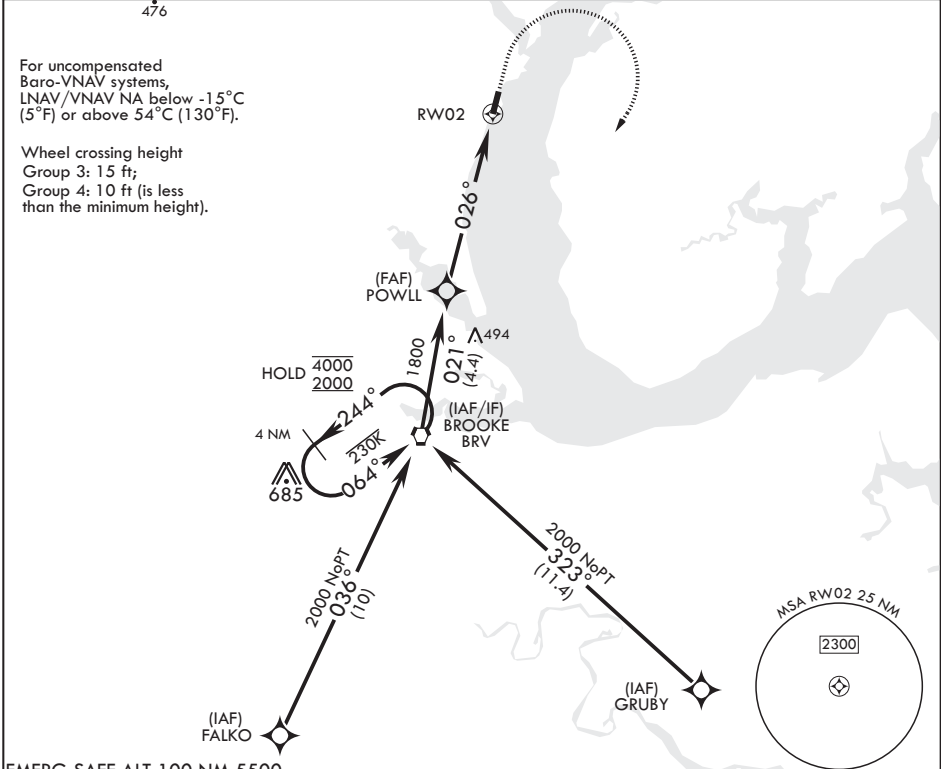
QUANTICO MCAF (TURNER FLD) (KNYG)

RNP APCH

MISSED APPROACH: Climb to 600, then climbing right turn to 2000 direct BRV VORTAC and hold.

* Circling not authorized W of Rwy 2-20.

ATIS*	POTOMAC APP CON/DEP CON	TOWER*	GND CON	ASR/PAR
263.15	128.525 306.925	118.6 (CTAF) 0 360.2	121.75 340.2	



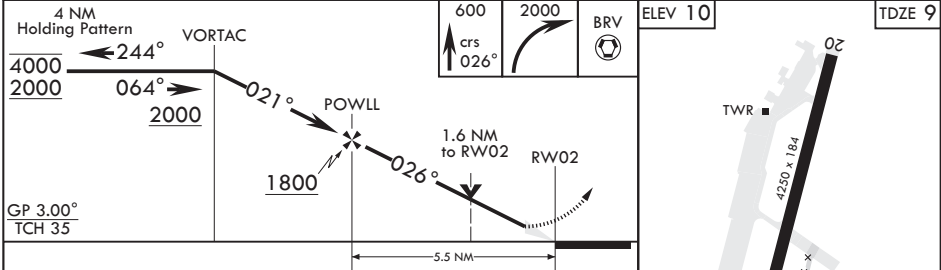
For uncompensated Baro-VNAV systems, LNAV/VNAV NA below -15°C (5°F) or above 54°C (130°F).

Wheel crossing height
Group 3: 15 ft;
Group 4: 10 ft (is less than the minimum height).

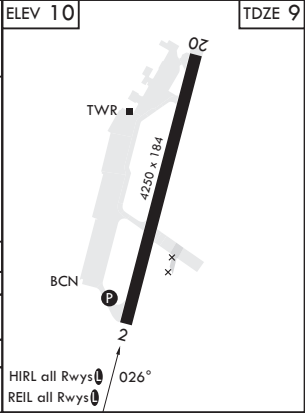
NE-3, 28 NOV 2024 to 26 DEC 2024

NE-3, 28 NOV 2024 to 26 DEC 2024

EMERG SAFE ALT 100 NM 5500



CATEGORY	A	B	C	D
LNAV/VNAV DA	429-1 $\frac{1}{8}$ 420 (500-1 $\frac{1}{8}$)	440-1 $\frac{1}{4}$ 431 (500-1 $\frac{1}{4}$)	448-1 $\frac{1}{4}$ 439 (500-1 $\frac{1}{4}$)	459-1 $\frac{1}{8}$ 450 (500-1 $\frac{1}{8}$)
LNAV MDA	560-1 551 (600-1)	660-1 650 (700-1)	700-2 690 (700-2)	740-2 $\frac{1}{4}$ 730 (800-2 $\frac{1}{4}$)
C CIRCLING*	560-1 550 (600-1)	660-1 650 (700-1)	700-2 690 (700-2)	740-2 $\frac{1}{4}$ 730 (800-2 $\frac{1}{4}$)



QUANTICO, VIRGINIA

38°30'N - 77°18'W

QUANTICO MCAF (TURNER FLD) (KNYG)

Amdt 4 03NOV22

RNAV (GPS) RWY 2