

ILS or LOC RWY 33L

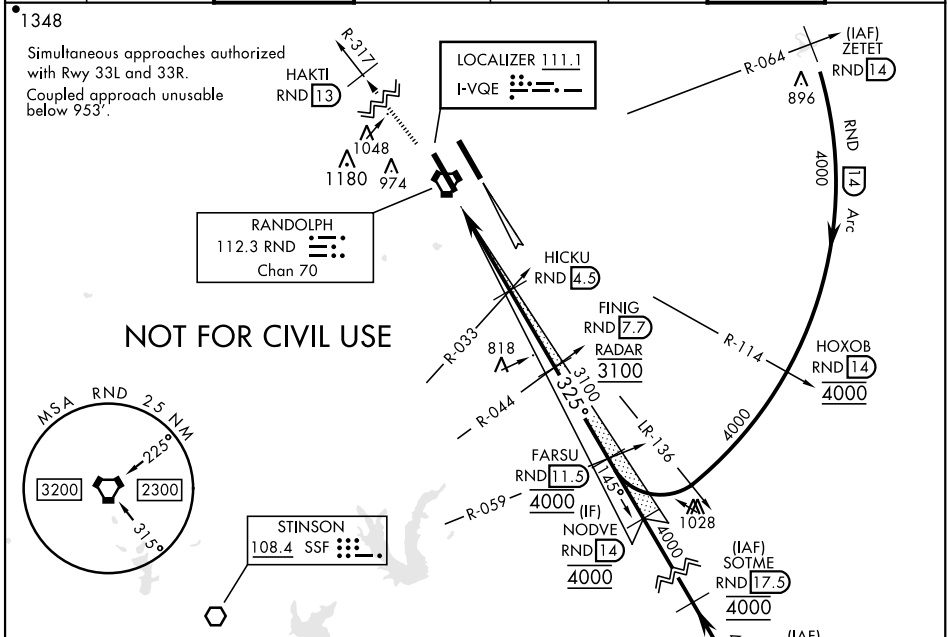
LOC I-VQE 111.1	APCH CRS 325°	Rwy Idg TDZE Arpt Elev 8352 733 761	[USAF]	RANDOLPH AFB (KRND)
---------------------------	-------------------------	---	--------	---------------------

RADAR or DME required

* Circling not authorized NE of Rwy 15R-33L.

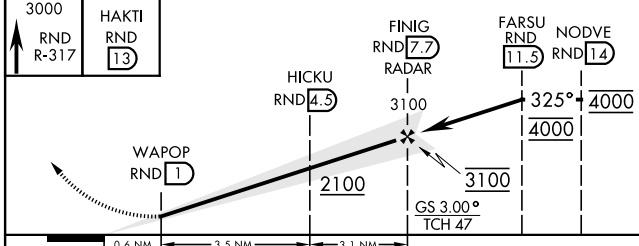
MISSED APPROACH: Climb to 3000 out RND VORTAC R-317 to 13 DME (HAKTI). Expect ATC instructions.

ATIS★ 290.525	SAN ANTONIO APP CON 128.05 318.1	TOWER★ 128.25 294.7	GND CON 119.65 275.8	CLNC DEL (RWY 15L-33R) 338.35	HANGOVER ATIS★ 327.8	HANGOVER TOWER★ 120.5 291.1	HANGOVER GND CON 124.75 353.75
-------------------------	--	-------------------------------	--------------------------------	---	--------------------------------	---------------------------------------	--



NOT FOR CIVIL USE

EMERG SAFE ALT 100 NM 4100



ELEV 761	TDZE 733
ALS Rwy 15L nstd len 2100'	
HIRL all rwys	
FAF to MAP 6.7 NM	
Knots	60 90 120 150 180
Min:Sec	6:42 4:28 3:21 2:41 2:14

CATEGORY	A	B	C	D	E
S-ILS 33L	933/40		200	(200-¾)	
S-LOC 33L	1080/55		347	(400-1)	
CIRCLING*	1240-1 479 (500-1)	1280-1 519 (600-1)	1500-2 739 (800-2)	1800-3	1039 (1100-3)
WITHOUT LAST STEP DOWN FIX					
S-LOC 33L	1140/55	407 (400-1)	1140/60	407	(400-1½)
CIRCLING*	1240-1 479 (500-1)	1280-1 519 (600-1)	1500-2 739 (800-2)	1800-3	1039 (1100-3)

ILS or LOC RWY 33L

SC-3, 28 NOV 2024 to 26 DEC 2024

SC-3, 28 NOV 2024 to 26 DEC 2024