

HI-ILS or LOC Z RWY 31

LOC I-RCA 110.3	APCH CRS 310°	Rwy ldg 13,497 TDZE 3192 Arprt Elev 3276
---------------------------	-------------------------	---

[USAF]

ELLSWORTH AFB (KRCA)

RADAR or DME required.

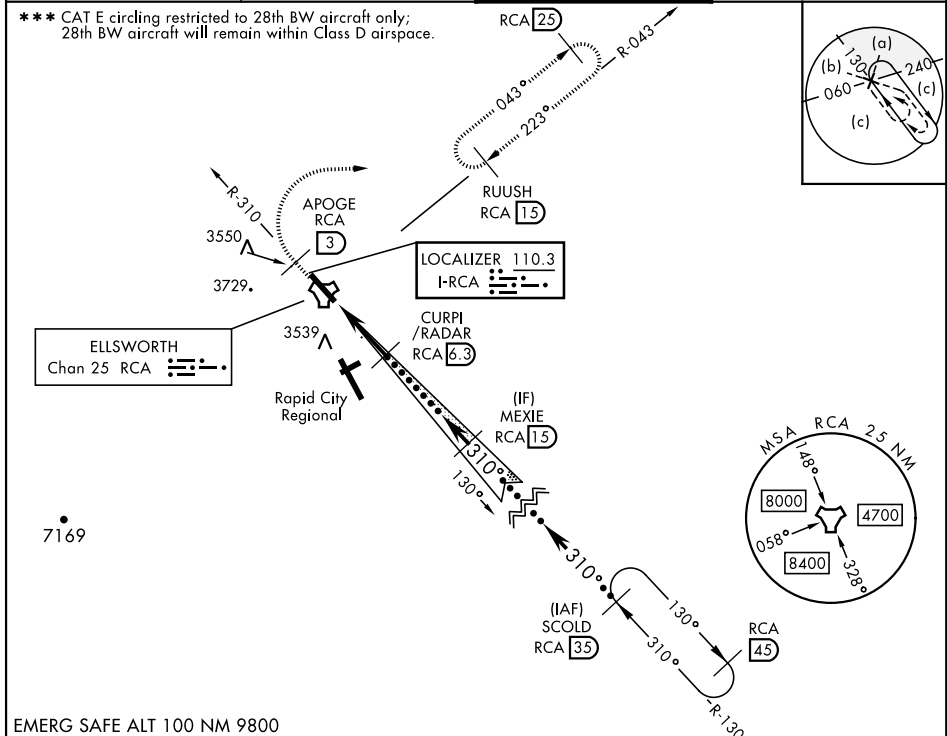


MISSED APPROACH: Track outbound RCA R-310 to 3 DME (APOGE), then turn right to join RCA R-043 to 15 DME (RUUSH) and hold. Maintain 6000.

▼ * When ALS inop, increase RVR to 40, vis to 3/4 mile.
 ** When ALS inop, increase vis to 1 3/4 miles.

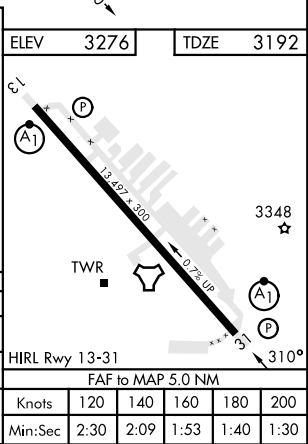
ATIS ★ 120.625 269.9	APP CON 119.5 259.1	TOWER ★ 126.05 253.5	GND CON 121.8 275.8
--------------------------------	-------------------------------	--------------------------------	-------------------------------

*** CAT E circling restricted to 28th BW aircraft only;
 28th BW aircraft will remain within Class D airspace.



EMERG SAFE ALT 100 NM 9800

APOGE RCA R-310 3	6000 RCA R-043	RUUSH RCA 15	VGSI and ILS glidepath not coincident (VGSI Angle 3.00 TCH 70).	SCOLD RCA 35 FL180
RCA TACAN		OPOGE RCA 1.3	CURPI RADAR RCA 6.3	MEXIE RCA 1.5 Intcp Lczr
0.5 NM		5 NM		
CATEGORY	C	D	E	
S-ILS 31*	3392/24	200	(200-1/2)	
S-LOC 31**	3800-1 3/8	608	(600-1 3/8)	
*** CIRCLING	3880-1 3/4 604 (700-1 3/4)	3980-2 1/4 704 (800-2 1/4)	4040-2 3/4 764 (800-2 3/4)	



HI-ILS or LOC Z RWY 31

NC-1, 28 NOV 2024 to 26 DEC 2024

NC-1, 28 NOV 2024 to 26 DEC 2024