

HI-TACAN Z RWY 13

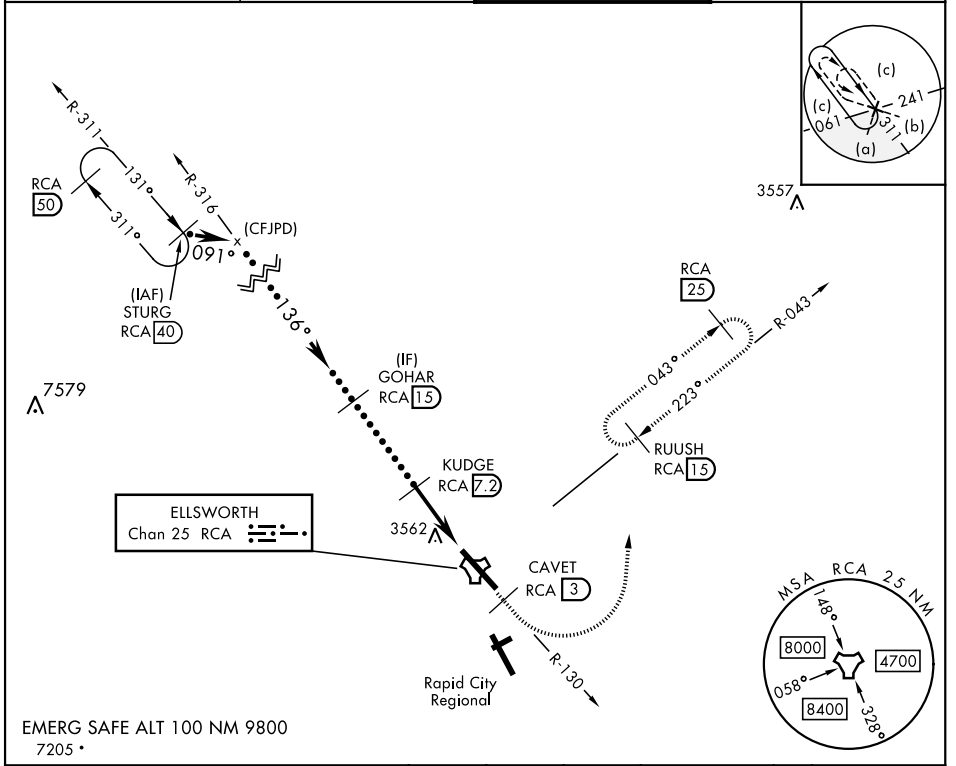
TACAN RCA Chan 25	APCH CRS 136°	Rwy Ldg 13,497 TDZE 3276 Arprt Elev 3276	[USAF]	ELLSWORTH AFB (KRCA)
-----------------------------	-------------------------	---	--------	----------------------

* When ALS inop, increase CAT CDE vis to 1½ mile.
 ** CAT E circling restricted to 28th BW aircraft only; 28th BW aircraft will remain within Class D airspace.

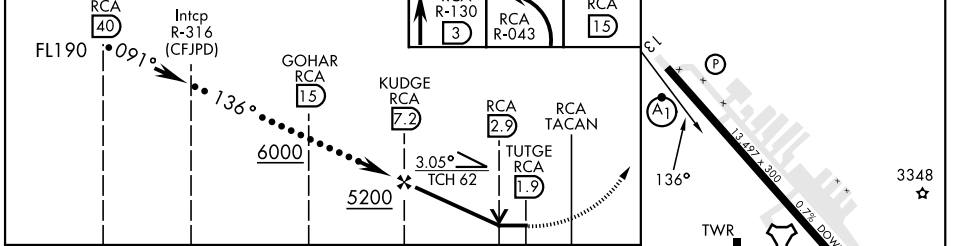


MISSED APPROACH: Track outbound RCA R-130 to 3 DME (CAVET), then turn left to join RCA R-043 to 15 DME (RUUSH) and hold. Maintain 6000.

ATIS * 120.625 269.9	APP CON 119.5 259.1	TOWER * 126.05 253.5	GND CON 121.8 275.8
--------------------------------	-------------------------------	--------------------------------	-------------------------------



EMERG SAFE ALT 100 NM 9800 7205 •



CATEGORY	C	D	E	ELEV 3276	TDZE 3276
S-13 *	3820/60	544 (600-1½)			
CIRCLING **	3880-1¾ 604 (700-1¾)	3980-2¼ 704 (800-2¼)	4040-2¾ 764 (800-2¾)		

RAPID CITY, SOUTH DAKOTA 44°09'N-103°06'W ELLSWORTH AFB (KRCA)

HI-TACAN Z RWY 13

NC-1, 28 NOV 2024 to 26 DEC 2024

NC-1, 28 NOV 2024 to 26 DEC 2024