

RAPID CITY, SOUTH DAKOTA

HI-TACAN Z RWY 31

TACAN RCA Chan 25	APCH CRS 302°	Rwy Idg 13,497 TDZE 3192 Arprt Elev 3276
-----------------------------	-------------------------	---

[USAF]

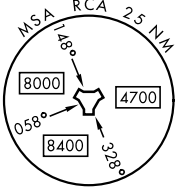
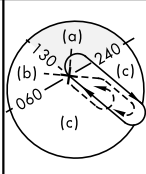
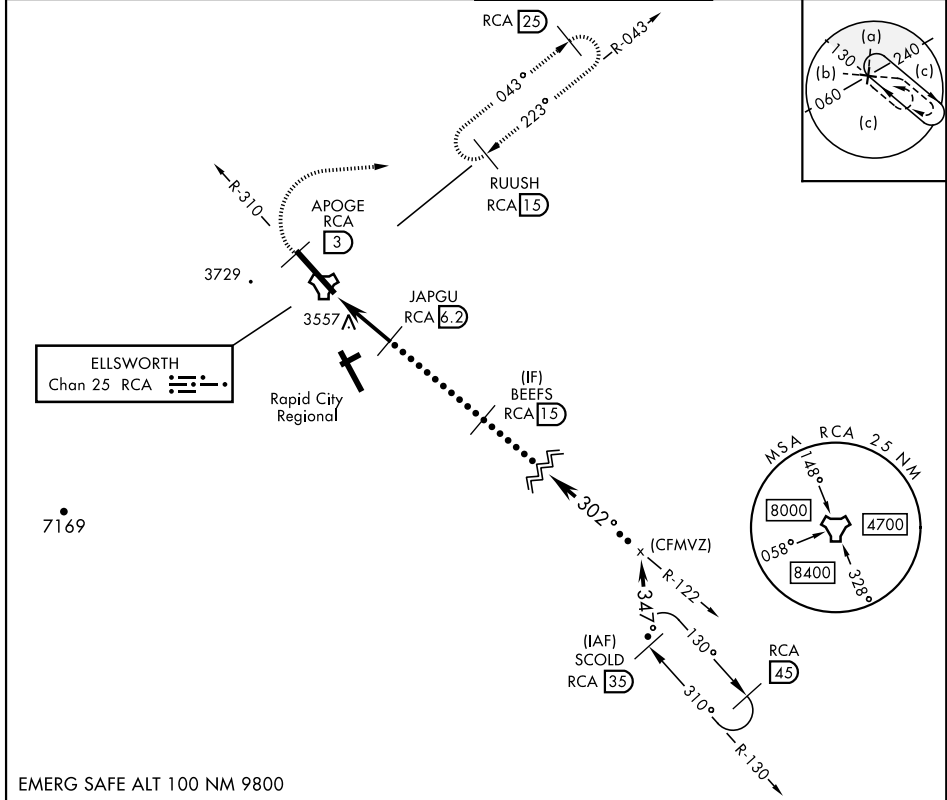
ELLSWORTH AFB (KRCA)

▼ * When ALS inop, increase CAT CDE vis to 1 3/4 mile.
 ** CAT E circling restricted to 28th BW aircraft only; 28th BW aircraft will remain within Class D airspace.



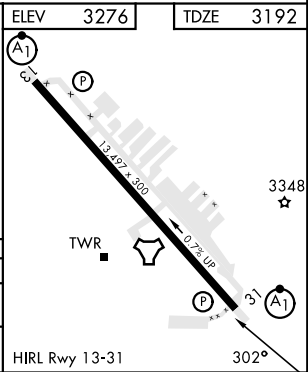
MISSED APPROACH: Track outbound RCA R-310 to 3 DME (APOGE), then turn right to join RCA R-043 to 15 DME (RUUSH) and hold. Maintain 6000.

ATIS ★ 120.625 269.9	APP CON 119.5 259.1	TOWER ★ 126.05 253.5	GND CON 121.8 275.8
--------------------------------	-------------------------------	--------------------------------	-------------------------------



EMERG SAFE ALT 100 NM 9800

APOGE RCA R-310 (3)	6000	RUUSH RCA (15)	SCOLD RCA (35)												
RCA TACAN	RCA (2.6)	JAPGU RCA (6.2)	BEEFS RCA (15)												
IYODO RCA (1.3)			Intcp R-122 (CFMVZ)												
			FL180												
<table border="1"> <tr> <td>CATEGORY</td> <td>C</td> <td>D</td> <td>E</td> </tr> <tr> <td>S-31*</td> <td>3820-1 1/8</td> <td>628</td> <td>(600-1 1/8)</td> </tr> <tr> <td>CIRCLING**</td> <td>3880-1 7/8 604 (700-1 7/8)</td> <td>3980-2 1/4 704 (800-2 1/4)</td> <td>4040-2 3/4 764 (800-2 3/4)</td> </tr> </table>				CATEGORY	C	D	E	S-31*	3820-1 1/8	628	(600-1 1/8)	CIRCLING**	3880-1 7/8 604 (700-1 7/8)	3980-2 1/4 704 (800-2 1/4)	4040-2 3/4 764 (800-2 3/4)
CATEGORY	C	D	E												
S-31*	3820-1 1/8	628	(600-1 1/8)												
CIRCLING**	3880-1 7/8 604 (700-1 7/8)	3980-2 1/4 704 (800-2 1/4)	4040-2 3/4 764 (800-2 3/4)												



RAPID CITY, SOUTH DAKOTA
 Amdt 1 15SEP16

44°09'N-103°06'W

ELLSWORTH AFB (KRCA)

HI-TACAN Z RWY 31

NC-1, 28 NOV 2024 to 26 DEC 2024

NC-1, 28 NOV 2024 to 26 DEC 2024