

RAPID CITY, SOUTH DAKOTA

# TACAN-A

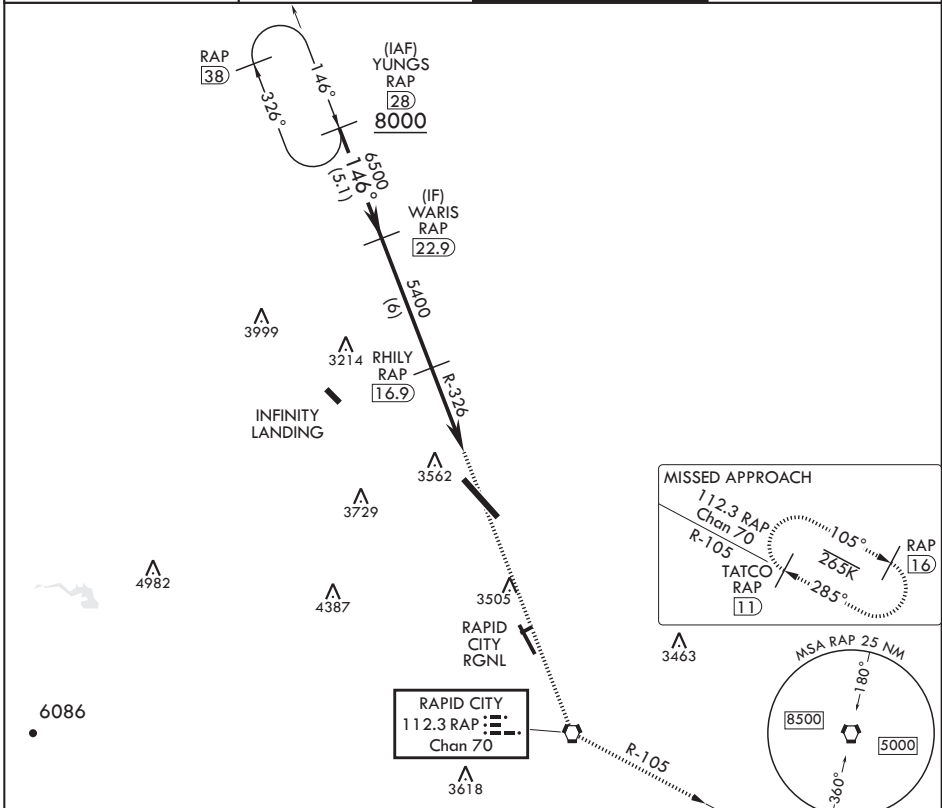
VORTAC RAP 112.3 Chan 70	APCH CRS 146°	Rwy Idg TDZE Arprt Elev N/A N/A 3276
--------------------------------	------------------	---

(USAF)

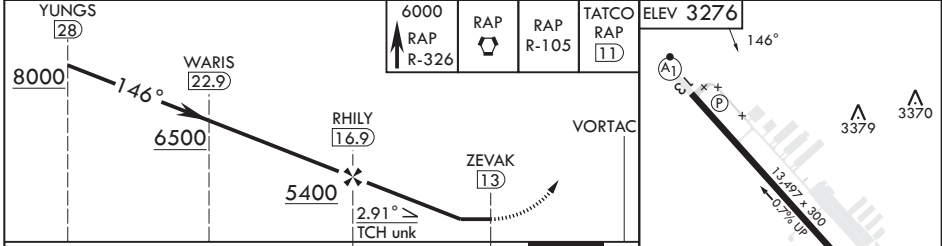
ELLSWORTH AFB (KRCA)

**▼** \* CAT E circling restricted to 28th BW aircraft only; 28th BW aircraft will remain within Class D airspace. MISSED APPROACH: Track inbound RAP R-326 to RAP VORTAC then turn left to join RAP R-105 outbound to 11 DME and hold. Maintain 6000.

ATIS* 120.625 269.9	APP CON 119.5 259.1	TOWER* 126.05 253.5	GND CON 121.8 275.8
------------------------	------------------------	------------------------	------------------------



EMERG SAFE ALT 100 NM 8800



CATEGORY	A	B	C	D	E
<b>C</b> CIRCLING*	3860-1 $\frac{1}{8}$ 584 (600-1 $\frac{1}{8}$ )	3880-1 $\frac{1}{8}$ 604 (700-1 $\frac{1}{8}$ )	3880-1 $\frac{1}{4}$ 604 (700-1 $\frac{1}{4}$ )	3980-2 $\frac{1}{4}$ 704 (800-2 $\frac{1}{4}$ )	4040-2 $\frac{3}{4}$ 764 (800-2 $\frac{3}{4}$ )

HIRL all Rwys

RAPID CITY, SOUTH DAKOTA

44°09'N - 103°06'W

ELLSWORTH AFB (KRCA)

Amdt 2 22JUN17

# TACAN-A

NC-1, 28 NOV 2024 to 26 DEC 2024

NC-1, 28 NOV 2024 to 26 DEC 2024