

# TACAN Y RWY 13

TACAN RCA Chan <b>25</b>	APCH CRS <b>136°</b>	Rwy Idg <b>13,497</b> TDZE <b>3276</b> Arpt Elev <b>3276</b>
-----------------------------	-------------------------	--------------------------------------------------------------------

[USAF]

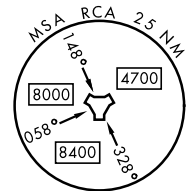
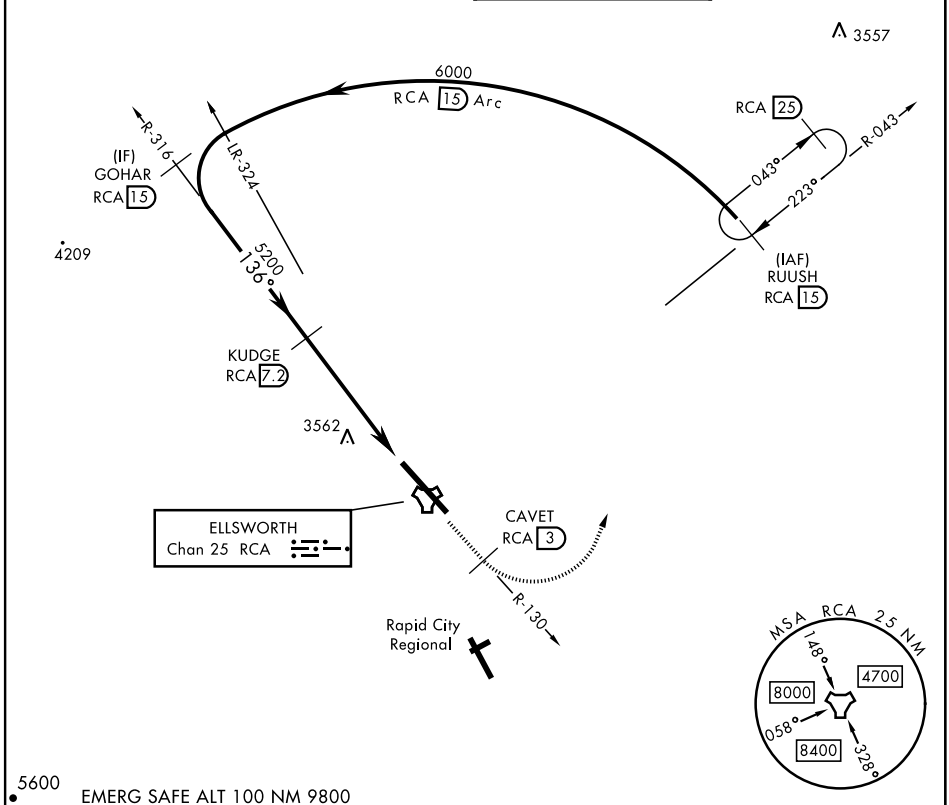
ELLSWORTH AFB (KRCA)

▼ \*When ALS inop, increase CAT AB RVR to 55 and vis to 1 mile, CAT CDE vis to 1½ miles.  
 \*\*CAT E circling restricted to 28th BW aircraft only; 28th BW aircraft will remain within Class D airspace.

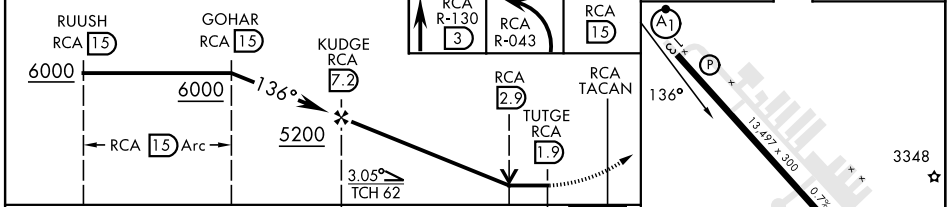


**MISSED APPROACH:** Track outbound RCA R-130 to 3 DME (CAVET), then turn left to join RCA R-043 to RCA 15 DME (RUUSH) and hold. Maintain 6000.

ATIS ★ <b>120.625 269.9</b>	APP CON <b>119.5 259.1</b>	TOWER ★ <b>126.05 253.5</b>	GND CON <b>121.8 275.8</b>
--------------------------------	-------------------------------	--------------------------------	-------------------------------



EMERG SAFE ALT 100 NM 9800



	ELEV	3276	TDZE	3276	
CATEGORY	A	B	C	D	E
S-13*	3820/24	544 (600-½)	3820/60	544	(600-1½)
CIRCLING**	3860-1	3880-1	3880-1¾	3980-2¼	4040-2¾
	584 (600-1)	604 (700-1)	604 (700-1¾)	704 (800-2¼)	764 (800-2¾)

RAPID CITY, SOUTH DAKOTA      44°09'N-103°06'W      ELLSWORTH AFB (KRCA)

Amdt 1 15SEP16

# TACAN Y RWY 13

NC-1, 28 NOV 2024 to 26 DEC 2024

NC-1, 28 NOV 2024 to 26 DEC 2024